

Programme Director GSA Singapore (1.0 FTE)  
School of Design

The Glasgow School of Art

---

The Glasgow School of Art is one of Europe's leading higher education institutions for creative education and research. We are organised into three specialist schools - the School of Design, the School of Fine Art, and the Mackintosh School of Architecture, with the Forum for Critical Inquiry providing a key component to all undergraduate degrees in art and design, and Research and Postgraduate Studies providing a significant area of growth and development. The School has over 350 full and part-time staff and has an annual turnover in excess of £17 million. Over 84% of academic staff are research active.

Our distinctive, specialist, practice-based education in architecture, design and fine art is internationally recognised. Nearly 20% of our 1,700 student are international and the School continues to be an institution of choice for many Scottish students, reflecting the important role the institution has within Glasgow and nationally within Scotland.

The GSA is an environment in which difference is encouraged and diversity of background and approach is valued. We share a passion and concern for visual culture and this is central to our vision to provide world-class creative education and research which make a significant economic, educational, cultural and social contribution.

From September 2012, the GSA will deliver years 3 and 4 of its BA (Hons) Programmes in Communication Design and Interior Design in Singapore, in partnership with the Singapore Institute of Technology (SIT) and Temasek Polytechnic (TP). The programmes will be located within the TP campus, in a dedicated SIT building from 2014, and the awards offered will be the same as that at the School's home campus in Glasgow.

The School of Design

---

The School of Design is committed to the development of design education, practice and research. Learning and teaching is studio-based and complemented by a critical programme of study from the Forum for Critical Inquiry. In addition to the undergraduate courses listed below, the School has developed a series of innovative postgraduate opportunities, linked to taught masters programmes and PhD study.

During 2011 The School of Design has completed a disaggregation of the BA (Hons) Design Programme, leading to a series of named awards including Interior Design, Silversmithing & Jewellery Design, Communication Design and Fashion & Textiles. In addition, the School of Design now complements our growing Graduate School provision including masters programmes in Interior Design, Communication Design and Graphics, Illustration and Photography.

The School of Design's reach extends beyond the main GSA Campuses in Glasgow to include a research centre in the North of Scotland, the Centre for Design Innovation, part of a major network of innovation experts.

### **Links**

<http://www.gsa.ac.uk/about-gsa/our-structure/school-of-design>

<http://www.gsa.ac.uk/about-gsa/our-structure/forum-for-critical-inquiry>

<http://www.gsa.ac.uk/about-gsa/our-structure/graduate-school>

<http://www.gsa.ac.uk/research>

### GS of A Singapore

Under the formal partnership agreement with the Singapore Institute of Technology (SIT), the GSA is establishing a subsidiary in Singapore (GSA Singapore), to liaise with SIT and Temasek Polytechnic and assume responsibility for all aspects of the Programmes' delivery.

### The Role

---

Job Title	Programme Director GSA Singapore (1.0 FTE)
Location	Temasek Polytechnic, Singapore
Reports To	Head of School of Design at GSA

### Purpose

The role of the Programme Director GSA Singapore is to:

- Manage the operations of GSA Singapore, leading the delivery of the GSA Undergraduate Programmes in Communication Design and Interior Design, managing and co-ordinating day-to-day operations, and acting as the formal point of contact between SIT and GSA;

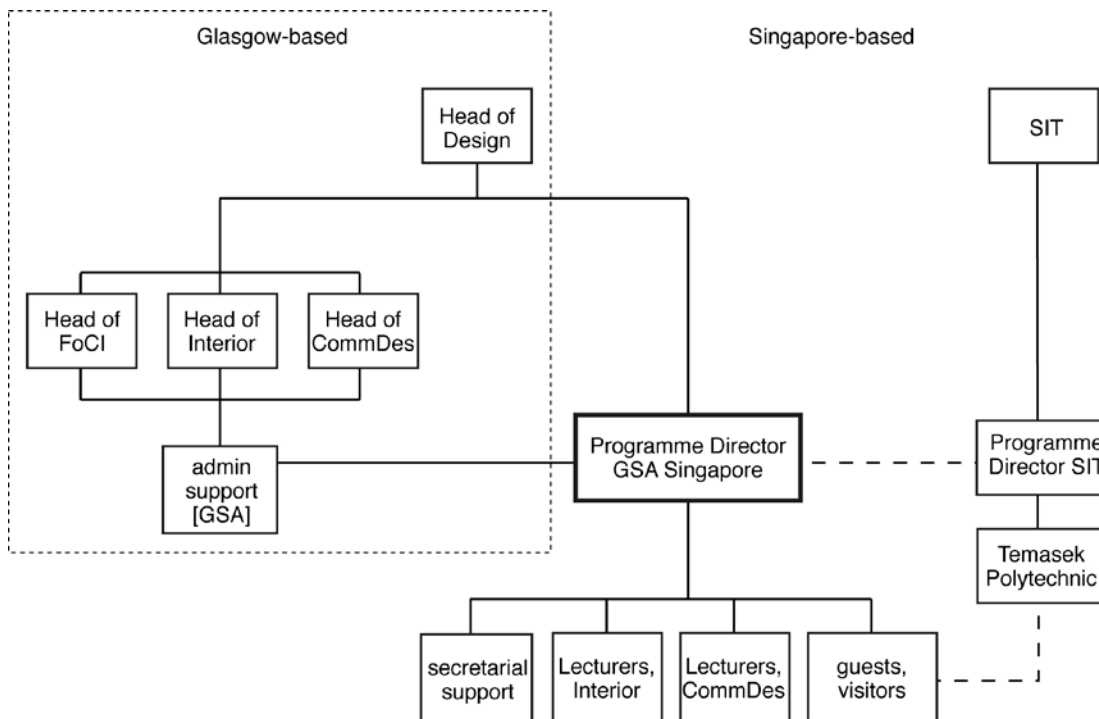
and, in conjunction with the relevant Programme Leaders for BA (Hons) Communication Design and BA (Hons) Interior Design, to:

- Provide a challenging and supportive learning experience for all students on the BA (Hons) Design programmes of study with a particular focus on enabling students to develop a strong identity as designers within the fields of Communication Design and Interior Design, integrated with design discourse;
- Contribute to the academic, strategic and structural development of GSA Singapore within the overall context and vision of the School of Design and the Glasgow School of Art;
- Lead on all aspects of quality assurance with regard to learning, teaching and assessment and be responsible for local GSA Singapore delivery, reporting directly

to the Head of the School of Design, and to the SIT/GSA Singapore Operations Committee;

- Assume responsibility for the local implementation of GSA's quality enhancement strategy initiatives, including the Learning and Teaching Enhancement Strategy, providing a GSA Singapore perspective regarding the development of GSA quality enhancement initiatives;
- Contribute to the research profile of the Glasgow School of Art through research activity; through the encouragement and support of research undertaken by GSA Singapore staff and GSA staff in Glasgow;
- Contribute to the promotion of the national and international reputation of The Glasgow School of Art and to help maintain the attractiveness of GSA and the School of Design to Home, EU and Overseas students.

Organisational Chart / Key Relationships



## Dimensions

### **GSA Singapore**

#### Staff (indicative)

- 6 - 7 GS of A Singapore staff (academic and administrative) engaged in delivery of the GSA's programmes in Singapore
- broadly equivalent number of matched staff supplied from Singapore Polytechnics, by SIT, and additional technical support staff
- Visiting academic staff support

#### Departments

- Communication Design, Interior Design

#### Students

- 200 Undergraduate students, across both year groups
  - Communication Design: 60 students per cohort
  - Interior Design: 40 students per cohort

## Roles and Responsibilities

### **Main duties and responsibilities are to:**

- Provide academic leadership in Communication Design and Interior Design in learning, teaching and research;
- Manage effectively the human, financial and physical resources of GSA Singapore;
- Contribute actively to the management and delivery of the BA (Hons) Design programmes to ensure that they can achieve their goals and objectives;
- Ensure that the Singapore programmes align with the Common Academic Framework of the GSA;
- Ensure that the specialist programmes in Communication Design and Interior Design align with the Scottish Credit and Qualification Framework and the national UK codes of practice;
- Ensure that all aspects of the quality assurance of learning and teaching and the maintenance of academic standards comply with GSA policies regulations;
- Ensure compliance with institutional regulations and relevant laws relating to Freedom of Information and Data Protection;
- Engage actively with the ongoing quality enhancement of the students learning experience within the programme;
- Contribute to the students' learning and teaching experience through tutorial input, seminars, lectures, critical feed-back or other forms of teaching;
- Take responsibility for assessment and progress review of students achievements;
- Create a network of industry and public service partners for the programme, and develop collaborative 'live' student projects;
- Support the continued development and delivery of employability and work related learning within the programmes
- Engage actively in personal research and contribute to the research culture of the School of Design and GSA through supporting the research endeavours of GSA Singapore staff and GSA staff in Singapore;

- Participate in the School's career review and development programme and undertake relevant staff development where appropriate;
- Promote the interests and enhance the profile of the School of Design and of Glasgow School of Art in the wider world including home and overseas recruitment activity, attendance at seminars and conferences, involvement in external bodies and press and media activity;
- Actively promote and encourage equal opportunities and widening participation;
- Undertake Health and Safety duties and observe procedures within own area of responsibility in relation to staff, students and visitors;
- Any other duties that may be reasonably required by the Head of School or the Directorate.

### Key Challenges

#### **Key challenges are to:**

- Develop the Undergraduate provision in Singapore in close collaboration with the Head of School and associated Programme Leaders at GSA;
- Keep informed about developments in contemporary Design and the context that both determines and challenges changes in respect of theory and practice;
- Keep actively informed about developments and challenges within Higher Education in Scotland, the UK and internationally;
- Contribute strategically to the enhancement and implementation of a Design led Learning and Teaching strategy within the in-country programmes;
- Contribute to further enhancement of the reputation of GSA and the School of Design in national and international arenas;
- Provide the conditions to develop a strong, subject specific identity for GSA Singapore in a collegiate environment which will foster critical debate on the development of contemporary Design practices;
- Develop and engage with a professional network of design practitioners, and maintain the currency of the network in relation to changes in professional practice.

### Person Specification

#### **Knowledge and Experience;**

- Educated to Masters degree level
- Substantial and demonstrable experience of practice, teaching or research in the domain of Design with particular reference to Communication Design or Interior Design, and contemporary design theory
- Advanced understanding of Learning and Teaching in relation to Design practice
- Minimum of five years experience of working with students at an undergraduate level
- Evidence of management experience in the context of Higher Education
- Research profile in an area compatible with research at the School of Design

#### **Personal Qualities;**

- A strategic thinker
- Strong leadership and interpersonal skills
- A proven ability to manage people and resources and develop internal and external partnerships

- A persuasive and effective advocate
- IT literacy skills
- Commitment to equal opportunities and diversity

### Terms and Conditions

- **Contract:**

Fixed term for three years

- **Probation Period**

It is recognised that there is an inevitable “settling in” period in any post. The probationary period is therefore an opportunity for the employee to fit within the culture of the School. It should be determined during this time whether the job is in line with expectations as expressed in pre-appointment discussions and interview and as set out in the Job description.

- **Staff Development:**

A minimum of five days are guaranteed under HE2000 terms and conditions. However, the School is committed to encouraging staff development for all its employees, which is to the benefit of the individual as well as the Institution as a whole.

Prior to the commencement of delivery of the in-country programmes, all GS of A staff will attend a development and training period in Glasgow, consisting of induction, staff development, mentoring and support in relation to the specific requirements of their posts and the ethos and the School of Design at the GSA. The timing and duration of this period will be confirmed in early-mid 2012.

- **Activity Plan:**

Duties and pattern of working will be set out in an Activity Plan. The plan will include: jointly agreed objectives including milestones and outcomes and an appropriate balance of teaching, research, consultancy, scholarly activity, personal development and other possible activities within the duties of an academic.

- **Salary:**

Grade 8, £45,336 - £52,556 per annum (paid in Singapore Dollars)

- **Additional Allowances for Expat Staff:**

Up to £18,870 per child (up to 2 children maximum) for local education;  
Up to £12,750 total travel allowance for partner and dependents;  
Local accommodation provided.

- **Holidays:**

35 days plus 11 public and statutory holidays per annum

- **Pension:**

Option to join the Scottish Teachers' Superannuation Scheme

- **Notice Period:**

3 months