



POSITION DESCRIPTION

Academic Positions

(In addition to the Position Classification Standards)

Position Title: Associate Research Fellow **Level:** A

Faculty/Division: Engineering

Department/Location: School of Civil, Mining and Environmental Engineering

Primary Purpose of the Position:

Conduct research for an ARC project involving Laboratory, Field and Theoretical Investigation of the role of particle breakage and densification under cyclic train loading.

Position Environment:

The Faculty of Engineering has approx. 1300 undergraduate and postgraduate students, 100 academic/research staff and 30 technical staff. The School of Civil, Mining and Environmental has approximately ten laboratories and conducts large, industrial scale research projects in structural, geotechnical and mining engineering.

Major Accountabilities/Responsibilities:

Responsibilities		Outcome	Office Use Only
1.	Work towards research objectives, ensuring close liaison with chief investigators	Maintain correct project direction and incorporate all research ideas and feedback from the research team	
2.	Critical review of the available literature	Understanding the current State-of-the-Art	
3.	Planning and execution of experimental work and data analyses	Obtain good quality laboratory test result	
4.	Execution of appropriate computational techniques and model development	Predictive tool	
5.	Contribute to high quality technical publications including peer reviewed journal papers	Dissemination of research outcomes to national and international community	
6.	Prepare technical reports, including the Annual ARC reports	Fulfilment of ARC requirements	
7.	Involvement in related geotechnical studies and assistance to chief investigators in drafting future research proposals for grant agencies	Secure related research grants for future extensions of this research	
8.	Communicate and consult with staff on workplace and staffing matters.	To foster direct relationships with staff and enhance engagement with the organisation.	Ongoing
9.	Observe principles and practices of Equal Employment Opportunity	To ensure fair treatment in the workplace	Ongoing

10.	Have OH&S responsibilities, accountabilities and authorities as outlined in the http://staff.uow.edu.au/ohs/commitment/responsibilities/document	To ensure a safe working environment for self & others.	Ongoing
-----	---	---	---------

Reporting Relationships:

Position Reports to:	Prof Buddhima Indraratna, Research Director, Centre for Geomechanics and Railway Engineering
The position supervises the following positions:	N/A

Key Relationships:

Contact/Organisation:
CME Laboratory Manager

Purpose & Frequency of contact
As required.

Key Challenges:

1. Research Innovation
2. High-calibre publications
3. Experimental skill
4. Knowledge of constitutive modelling

SELECTION CRITERIA - Knowledge & Skills:

Essential:

- Bachelor of Civil Engineering or related field
- Experience in fundamental geotechnical testing
- Experience in computational and numerical modelling
- PhD in Civil (Geotechnical) Engineering

SELECTION CRITERIA - Education & Experience:

Essential:

- Bachelor of Civil Engineering or related field
- Experience in geotechnical testing
- Experience in computer and numerical modelling including discrete element modelling
- Recent PhD in Civil Engineering or related discipline

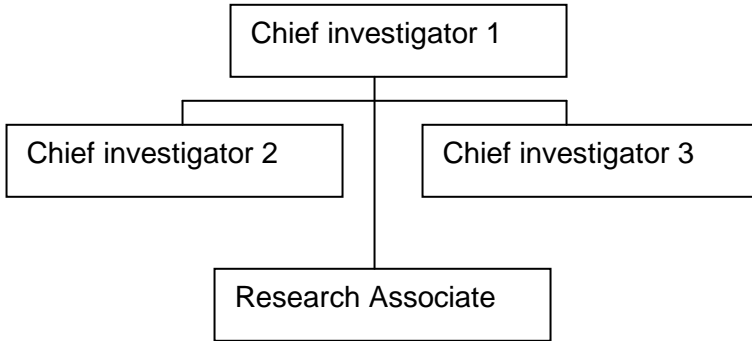
Personal Attributes:

Energetic, independent, adaptable and innovative

Special Job Requirements:

Occasional field trip may be necessary.

Organisational Chart:



Approval:

Approved by Head of Unit: S. Indraratne _____

Date: 16/11/2012 _____

Approved by Personnel: _____

Date: _____



POSITION CLASSIFICATION STANDARD - Research Only

Level: A
Title: Associate Fellow

Description

A position classification standard describes the broad categories of responsibility attached to research-only academic staff at different levels. The standards are not exhaustive of all tasks in research-only academic employment, which is by its nature multi-skilled and involves an overlap of duties between levels. The standards provide an adequate basis to differentiate between the various levels of employment and define the broad relationships between classifications.

Progression through an academic career will normally be based on research, teaching, administrative functions and contribution to the profession. The balance of functions will vary according to level and position over time. It is only in exceptional circumstances that promotion would be solely on the research only position classification standards.

- General Standard
- Specific Duties
- Skill Base

General Standard

A Level A research-only academic is expected to contribute towards the research effort of the institution, and to develop her/his research expertise through the pursuit of defined properties relevant to the particular field of research.

Specific Duties

Specific duties required of a Level A research-only academic may include

- The conduct of research under limited supervision either as a member of a team or, where appropriate, independently, and the production or contribution to the production of conference and seminar papers and publications from that research.
- Involvement in professional activities including, subject to availability of funds, attendance at conferences and seminars in the field of expertise.
- Limited administrative functions primarily connected with the area of research of the academic.
- Development of a limited amount of research-related material for teaching or other purposes with appropriate guidance from other staff.
- Occasional contributions to teaching in relation to his/her research project(s).
- Experimental design and operation of advanced laboratory and technical equipment or conduct of advanced research procedures.
- Attendance at meetings associated with research or the work of the organisational unit to which the research is connected and/or at departmental and/pr faculty meetings and/or membership of a limited number of committees.
- Advice within the field of the staff member's research to postgraduate students.
- A Level A research-only academic shall work with support, guidance and/or direction from staff classified at Level B and above and with an increasing degree of autonomy as the research academic gains in skill and experience.

Skill Base

A Level A research-only academic will normally have completed four years of tertiary study in the relevant discipline or have equivalent qualifications or research experience. In many cases a position at this level will require an honours degree or higher qualifications or equivalent research experience. Research experience may have contributed to or resulted in publications, conference papers, reports or professional or technical contributions which give evidence of research potential.