

Senior Lecturer in Clinical Dentistry (Public Health)

Faculty of Science
School of Dentistry and Health Sciences

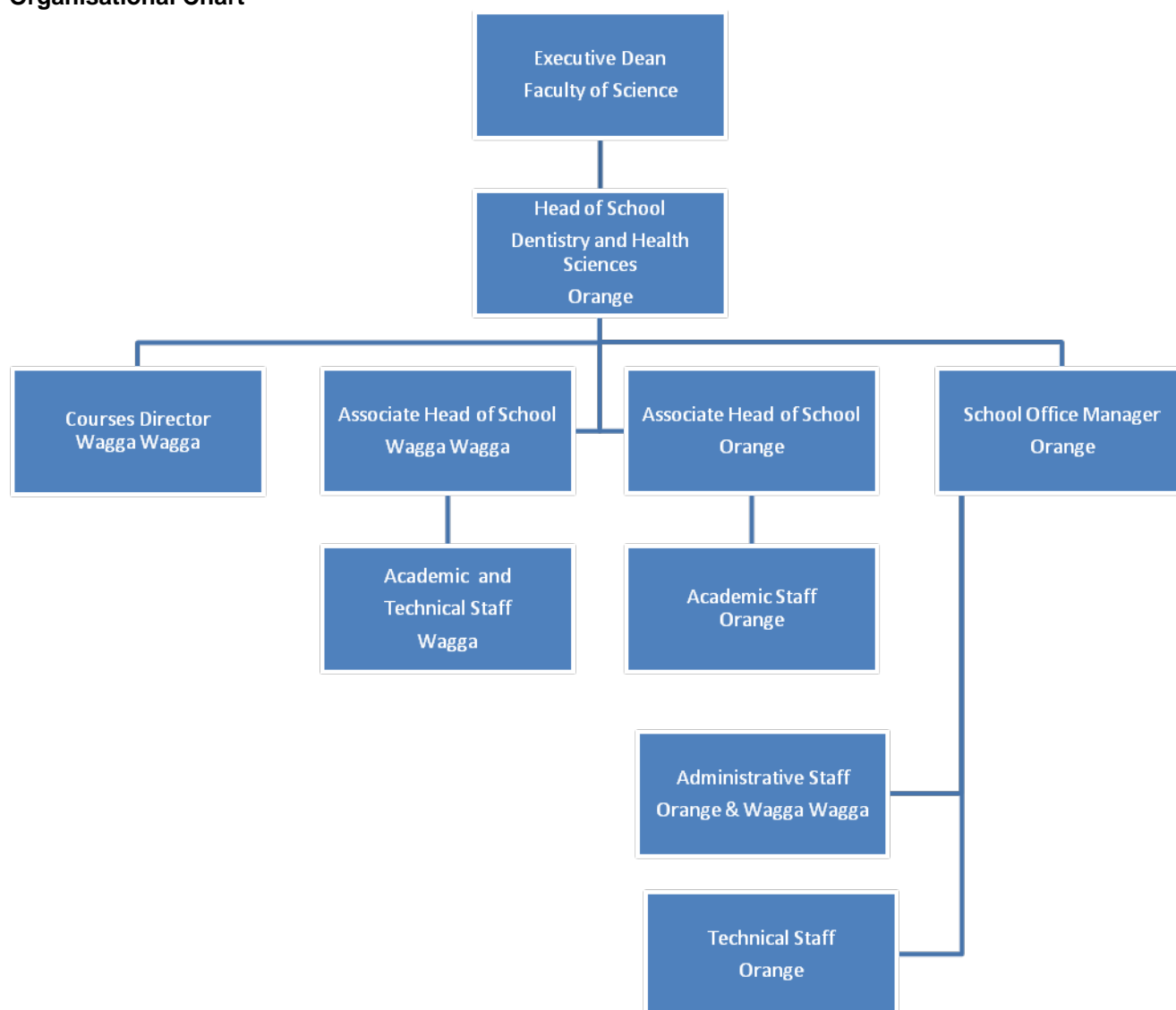
Position Number	637104
Campus	Orange
Classification	Level C
Nature of Employment	Continuing
Employee Contribution to Superannuation	7% (flexible contribution options available)
Employer Contribution to Superannuation	17%
Workplace Agreement	Charles Sturt University Enterprise Agreement 2013-2016
Date Last Reviewed	January 2014

Faculty of Science – Organisational Environment

The Faculty of Science has more than 9000 students and over 500 staff dedicated to advancing scientific knowledge. It delivers flexible and innovative teaching programs designed to produce job-ready graduates for a diverse range of professions. As a leader in strategic and applied research the Faculty aims to enhance and extend scientific knowledge, train and educate future researchers as well as provide scientific solutions to current regional, national and global challenges. The staff and students of the Faculty achieve their educational and research goals through ethical practice, professional collaboration, industry involvement and a commitment to continual improvement.

The School of Dentistry and Health Sciences is a multi-campus, academic unit. The School offers a suite of undergraduate and postgraduate courses both onshore and offshore in a range of health disciplines including: Dentistry, Oral Health Therapy, Medical Radiation Science, Medical Imaging and Nuclear Medicine and Nutrition and Dietetics. The School is committed to enhancing its reputation as a high performing multidisciplinary school and seeks academics focused on providing quality education and being actively involved in a variety of development of health professional education and health based research programs that complement these courses.

Organisational Chart



Reporting Relationships

This position reports to: Head of School, School of Dentistry and Health Sciences

This position supervises: Nil

Position Overview

The Senior Lecturer in Public Health will be a dental academic with extensive undergraduate and postgraduate teaching experience, with particular emphasis on Public Health and comprehensive clinical dental care. The Senior Lecturer in Public Health will contribute significantly to and promote high quality curriculum delivery. The Senior Lecturer in Public Health will also be involved in course review processes, development and provide leadership in the discipline. The incumbent will have a record of published research and to be able to lead relevant research development in the discipline of Dentistry within the School. Principal teaching duties will involve both didactic and clinical responsibilities including discipline administration.

The School of Dentistry and Health Science places great importance on its relationships with the Dental and Health professions and relationships with rural and regional communities. The incumbent will be expected to fully engage, maintain and further develop these relationships, especially in the context of developing dental public health and oral health promotion initiatives having a rural – regional focus.

Principal Responsibilities

Teaching and Learning

- Teach undergraduate subjects in the Bachelor of Dental Science program and other programs such as the Bachelor of Oral Health Therapy course as required
- Teach and supervise at honours and postgraduate level as required
- Develop as required course materials
- Coordinate subjects
- Provide leadership in maintaining and further developing the sub discipline of Public Health in the School
- Where relevant teach subjects in flexible delivery modes
- Consult with students
- Provide support to other academics as required

Research

- Build a research program and be involved in obtaining external funding
- Conduct research and publish scholarly papers
- Develop a program of applied and contract research in the discipline of Dentistry
- Collaborate with colleagues and postgraduates in the development of joint research projects

Community Service

- Foster the School's relations with industry, government departments, professional bodies and the wider community

Administration

- Perform a range of administrative functions in the Faculty, School or University as required

Capabilities

- Possess determination and energy to set and meet challenging objectives and the ability to organise resources to achieve outcomes and monitor ongoing performance.
- The ability to effectively share ideas, thoughts, information and feelings with a diverse range of audiences and the ability to impact and influence others to achieve common goals through effective communication.
- The ability to think strategically, provide analysis, advice and direction, which supports the long and short term goals of the School, Faculty and University.
- The ability to work cooperatively within the School and across the organisation to understand team dynamics, to contribute to teams, and foster environments of mutual trust and respect.

Physical Capabilities

- Standing for long periods giving lectures / clinical teaching
- On occasion drive a university vehicle distances up to 500kms per day within the terms of the University's Driving Hours Guidelines and Policy available at http://www.csu.edu.au/_data/assets/word_doc/0005/167486/driving-hours-policy.docx and http://www.csu.edu.au/__data/assets/pdf_file/0010/188524/Driving-hours-guideline.pdf

Selection Criteria

Applicants are expected to address the selection criteria when applying for this position.

Essential

1. A doctoral qualification relevant to the discipline area; or equivalent accreditation and standing;
2. A record of significant achievement relevant to the discipline area, and at a national level, in the scholarship of teaching and/or research or professional activity;
3. Registration with the Dental Board of Australia.
4. Capacity to provide leadership to the discipline in the scholarship of teaching and/or research/creative works or professional activity;
5. Demonstrated experience in teaching at an undergraduate and/or postgraduate level in the relevant clinical discipline areas.
6. Demonstrated understanding of modern dental curriculum models and frameworks and an ability to apply these in practice.
7. Excellent interpersonal skills and a demonstrated ability to work with students.
8. Demonstrated ability to be proactive and task focussed independent of direct instruction.
9. Ability to undertake the responsibilities of subject administration and coordination.
10. A demonstrated ability to lead in the discipline of Public Health and effectively liaise with colleagues and work as a member of a multi-disciplinary team;
11. Demonstrated ability to build and maintain both internal and external networks/relationships for the purposes of professional performance of duties and collegiality
12. Evidence of a research profile relevant to the discipline and School.

Further information is available from

Professor David Wilson

Head

School of Dentistry and Health Sciences

Phone: 02 6365 7251

Email: dvwilson@csu.edu.au

Information for Prospective Staff

Your Application

E-recruitment is the method by which CSU manages its recruitment processes and it is preferred that all applications be lodged using this method. Please refer to www.csu.edu.au/jobs/

If intending applicants are unable to access this website, please contact the HR Service Centre on 02 6338 4884.

Staff Benefits

CSU is committed to providing an employment environment that fosters teamwork, innovation, reflective practice, continual learning, knowledge sharing and opportunities for staff to achieve their full potential. CSU is committed to providing a flexible working environment that encourages employees to live a balanced lifestyle, combining work and family responsibilities.

To find out more: <http://www.csu.edu.au/jobs/benefits/>

Essential Information for Staff

- All employees have an obligation to comply with all the University's workplace health & safety policies, procedures and instructions and not place at risk the health and safety of any other person in the workplace;
- All employees are required to be aware of and demonstrate a commitment to the principles of equal opportunity in the workplace;
- All employees are to ensure the creation and maintenance of full and accurate records of official University business adheres to the University's Records Management Policies; and
- All employees are expected to undertake an induction program on commencement.

Further information regarding the policy and procedures applicable to Occupational Health and Safety and Equal Opportunity can be found on the CSU website <http://www.csu.edu.au/division/hr/>

Further information regarding the policies and procedures of CSU can be found in the Administration Manual at: <http://www.csu.edu.au/adminman/hum/humanresources.htm>

Further information on Delegations is available at <http://www.csu.edu.au/adminman/del/>

Code of Conduct: <http://www.csu.edu.au/adminman/hum/CodeOfConduct.doc>

CSU Enterprise Agreement 2013 -2016: <http://www.csu.edu.au/division/hr/enterprise-agreement.pdf>