



LEADERSHIP / VISION / PASSION
CONNECT: UNIVERSITY OF WOLLONGONG

PROFESSOR OF MEDICAL & EXERCISE SCIENCE
FACULTY OF SCIENCE,
MEDICINE AND HEALTH

CANDIDATE INFORMATION PACK



TOP 2% OF WORLD UNIVERSITIES

QS World University Rankings 2012/2013
Times Higher Education World University Rankings 2012/2013
Academic Ranking of World Universities (ARWU) 2012



Globally Rated a Five Star University

QS World University Rankings 2012/2013
Australian Good Universities Guide 2013



Globally Ranked as One of Australia's Best Modern Universities

33rd in the world — Times Higher Education Top 100 Under 50 Rankings 2012
30th in the world — QS Top 50 Under 50 Rankings 2012

CONTENTS

Message from the Vice Chancellor	03	Our Campuses	09	Faculty Structure	17
About the University	04	Working at UOW	12	Position Summary	18
Strategic Plan	05	Teaching & Research Infrastructure	13	Selection Criteria	19
UOW Reputation Indicators	06	State-of-the-art Facilities	14	Lifestyle	20
Governance & Structure	07	Globally Connected	15	How to Apply	22
Research Intensity	08	About the Faculty	16		

VICE-CHANCELLOR'S INTRODUCTION



The University of Wollongong (UOW) is an ambitious institution. Our aim is to connect great minds in the pursuit of novel ideas and innovations that will help solve global challenges. In the process, we believe UOW can also reach our stated goal of joining the Top 1% of research universities in the world.

We are a powerhouse of learning and teaching excellence and we assert our standing as a significant research-intensive university, having been ranked in the Top 10 research-intensive universities in Australia in the 2012 federal government research performance assessment process (Excellence in Research Australia - or ERA). Furthermore, as a relatively young institution, we are proud to be ranked among the Top 50 modern universities in the world and equal first in Australia according to the latest THE and QS ratings.

Over the past 18 months, UOW has undertaken a major evolutionary step toward its goal of universal recognition as a global destination of choice in higher learning and pioneering research. We have transformed our senior executive and faculty shape to ensure we are optimally structured and resourced to succeed well into the future.

It is a great time to be joining UOW, as our new faculties take shape and we look to build our profile in key discipline areas. This appointment will be awarded to a genuine academic leader who easily engages colleagues, who enjoys developing the strengths of others, who relishes the big picture and who is excited about further building on the Faculty's excellent reputation.

On behalf of the University and the Faculty of Science, Medicine and Health, I thank you for your interest in this position.

A handwritten signature in black ink, appearing to read 'P. Wellings', with a long horizontal line extending to the right.

Professor Paul Wellings CBE
Vice-Chancellor



ABOUT THE UNIVERSITY OF WOLLONGONG

UOW is currently in an exciting period of transformational change. We are one year into a new strategic planning cycle and have just realigned our faculties, schools and disciplines. We are doing this to serve an agenda that aims to place UOW in the top 1% of the world's research universities. This is complemented by a Global Challenges Research Program that will focus our research in areas of national and international significance.

We are internationally renowned for our applied research, which is enhanced by partnerships with industry, community and government, and focused on national economic, technological and social objectives. Our Global Challenges Program will bring together researchers from a variety of disciplines to work together on three of Australia's biggest challenges: managing an ageing population, coping with industrial transformation and sustaining coastal environments.

Throughout our 60-year history, we have shaped the future through teaching, learning, researching and connecting with the community on a local and global scale. In that time we have built a world-class institution with strong global recognition for our programs, student experience and progressive research. We also have the highest levels of staff engagement and organisational progress in the higher education sector across Australia and New Zealand.

Since our inception, our enrolment has grown to over 30,000 students from 143 nationalities. We have a proud and dedicated workforce of over 2,000 full time staff, spread over nine campuses, and are supported by engaged, high quality professional and administrative staff.

OUR PURPOSE:

- We aim for a position in the top 1% of world universities.
- We aim to offer an empowering learning experience, informed by research and our external context.
- We aim to enrich all our regional communities through a strong and connected presence.
- We aspire to make UOW a destination university and Wollongong a university city.

OUR VALUES:

The commitments under our 2013-18 goals endorse and promote the University's core values of:

- Excellence through initiative, enterprise and achievements that take society forward
- Intellectual openness and freedom of opinion
- Integrity
- Mutual respect and collegiality
- Diversity of cultures, ideas and peoples
- Indigenous perspectives and reconciliation
- Foresight, quality and accountability as an institution
- Community partnerships and mutual development
- Equity and social justice



UOW STRATEGIC PLAN: A SNAPSHOT

GOAL 1: RESEARCH & IMPACT

Build an outstanding research community that values emerging researchers and supports research-active staff to achieve the highest quality results and disseminate their benefits to user communities.

GOAL 2: LEARNING & THE STUDENT EXPERIENCE

Deliver student-centred, challenging programs to the highest standards in a technology-rich learning environment that attracts high quality students and develops all students for their graduate roles in society and the global workplace.

GOAL 3: CONNECTING COMMUNITIES

Integrate teaching, research, and community and business linkages at global and regional level to enhance our research base and our contribution to student and community development.

GOAL 4: STAFF & CULTURE

Foster a culture of continuous improvement by rewarding initiative, creativity and performance in an environment which develops staff and encourages the highest quality standards.

GOAL 5: SUSTAINING A VIBRANT UNIVERSITY

Ensure our capacity to deliver our mission by continuing to transform and modernise systems, business processes and the built environment.

GOAL 6: CHANGE & TRANSFORMATION

Drive the standing and global recognition of UOW and its qualities through selective investments in strategic initiatives and by engaging with key supporters to deliver our long-term vision.

For more information about our strategic plan:
www.uow.edu.au/planquality/strategicplan

For more information about the University:
www.uow.edu.au/about

For information about Research:
<http://www.uow.edu.au/research>

For information about Learning and Teaching:
www.uow.edu.au/about/teaching

For information about our Faculties and Schools:
www.uow.edu.au/about/faculties

For information about staff Awards & Agreements:
<http://staff.uow.edu.au/personnel/awardagree>



UOW REPUTATION INDICATORS

At UOW we are, and always have been, about academic excellence. We're in the top 2% of universities world-wide and we're aiming higher every day. We're proud of what we have achieved so far, but we're not done yet.

TOP 2% OF UNIVERSITIES IN THE WORLD

264th in the world – QS World University Rankings 2012/2013

305th in the world – Times Higher Education World University Rankings 2012/2013

346th in the world – Academic Ranking of World Universities (ARWU) 2012

GLOBALLY RANKED AS ONE OF AUSTRALIA'S BEST MODERN UNIVERSITIES

33rd in the world – Times Higher Education Top 100 Under 50 Rankings 2012

Equal 1st in Australia – Times Higher Education Top 100 Under 50 Rankings 2012

30th in the world – QS Top 50 Under 50 Rankings 2012

GLOBALLY RATED A FIVE-STAR UNIVERSITY

5 Star rating – QS World University Rankings 2012/2013

1st in Australia for Educational Experience and Graduate Outcomes – Australian Good Universities Guide 2013

TOP 100 IN THE WORLD FOR GLOBAL GRADUATES

5th year in a row that employers have ranked our graduates in the top 100 universities in the world – QS World University Rankings Graduate Employers Survey 2012

EXCEPTIONAL STAFF ENGAGEMENT LEVELS

UOW staff reported the highest level of employee engagement and organisational progress in the higher education sector in the 2012 'Your Voice' organisational climate survey. ('Your Voice' is used in 37 Universities across Australia and New Zealand). Here are some of the results from that survey:

- 89% of staff believe that UOW has a strong focus on achieving positive results
- 92% of staff know their job contributes to the success of UOW
- 93% of staff feel they have good working relationships with their co-workers
- 86% of staff believe that UOW has a strong research culture
- 85% of staff believe that UOW has a strong teaching culture
- 86% of staff believe that UOW engages with the community in meaningful ways
- 88% of staff feel a sense of loyalty and commitment to UOW
- 90% of staff like the kind of work they do
- 91% of staff are proud to say they work at UOW

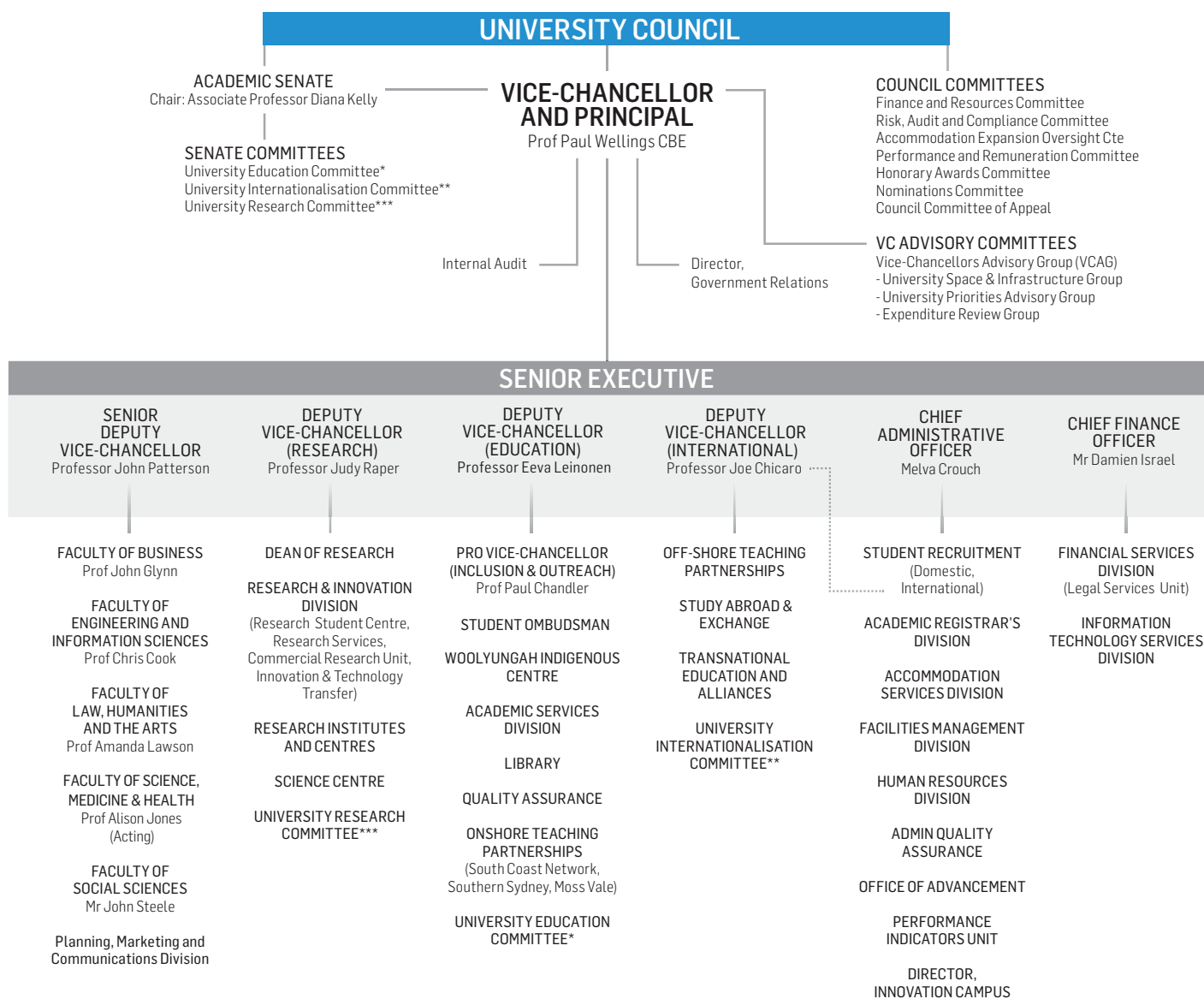
UOW GOVERNANCE & STRUCTURE

UOW is governed by the University Council, which is supported and informed by a number of Committees acting under the delegated authority of Council to fulfil UOW's Vision and Goals.

The Academic Senate is the peak body advising the University Council and Vice-Chancellor on academic matters and broad issues affecting the academic excellence of the University. A central role of Academic Senate is to evaluate, endorse and recommend policies to University Council.

The aim of our various committees is to provide leadership in the development of policy and strategy and play a key role in the management of all University activities.

For more information about governance and structures:
www.uow.edu.au/governance





RESEARCH INTENSITY

UOW's growing research intensity attracts national and international grant funding and brings academic talent and expertise from around the world to work in our beautiful region.

Many UOW faculty are leaders in their fields who conduct world-class research and serve as advisors to industry and government agencies. Our research often contributes to innovation where firms, government and others deliberately incorporate knowledge generated from UOW's research into their activities and outcomes so as to improve or develop new products (goods and services), processes and organisational forms.

Such innovation is a critical ingredient to future regional growth, competitiveness, wealth and prosperity and in providing the capacity, and associated adaptability, for the region to tackle emerging economic, social and environmental challenges.

KEY FACTS:

- Rated amongst the 'Top 10' research universities in Australia (ERA 2012)
- \$431M in research & commercialisation income
- 275 invention disclosures
- 60 successful patents
- 50 commercial licence agreements
- 4 new start-up companies



RESEARCH & DEVELOPMENT

RESEARCH IMPACT

KNOWLEDGE INNOVATION

KNOWLEDGE TRANSFER

CONNECT: OUR CAMPUSES

WOLLONGONG CAMPUS

The Wollongong Campus (our main campus) is located on the New South Wales coast, 80km south of Sydney and 3km from the centre of Wollongong. The campus combines a tranquil bushland setting with modern, state-of-the-art facilities and infrastructure that provides the perfect environment for learning. A comprehensive range of undergraduate and postgraduate courses are offered across nine faculties and two graduate schools.

INNOVATION CAMPUS (IC)

A visionary initiative, UOW's Innovation Campus (iC) aims to be the best environment in the Asia-Pacific region for people and organisations to exchange and develop ideas and deliver innovative outcomes. It welcomes creative companies who can share this vision and who can use their imagination and skill to produce something new. Participants have an opportunity to work with UOW research teams in areas such as information and communications technology, multimedia, nanotechnology, biotechnology, health sciences, engineering technologies, intelligence and security and organisational management.

This creative community is being developed on 33 seaside hectares in North Wollongong and is just one hour from Sydney international airport. Its landscape and infrastructure are distinguished by the latest in high tech and sustainable design. The iC will employ up to 5,000 people and represents an investment of over \$300 million.

SYDNEY BUSINESS SCHOOL

Sydney Business School operates from two locations: UOW's Innovation Campus in North Wollongong; and the heart of Sydney at 1 Macquarie Place on Circular Quay, situated by iconic Sydney landmarks. The School provides world-class postgraduate courses with flexible learning formats so that Wollongong and Sydney-based managers and professionals have the opportunity to expand their horizons.

SHOALHAVEN CAMPUS

Situated west of Nowra in the City of Shoalhaven, UOW and Illawarra Institute of TAFE have built a facility that provides teaching space for both institutions which includes a joint library, a canteen and student facilities. Students attending the Shoalhaven Campus have access to the full range of services offered by the University of Wollongong and learning is supported by easy access to computers and information technology.

UOW BATEMANS BAY

The Batemans Bay campus is a joint facility between the University of Wollongong, Illawarra Institute of TAFE and the Eurobodalla Shire Council. Courses are provided by the University and TAFE and the campus also houses the Batemans Bay Community Library. The Library has experienced staff to assist students and stocks an excellent core collection of print, reserves and audiovisual materials as well as access to electronic databases and full text resources.

UOW BEGA

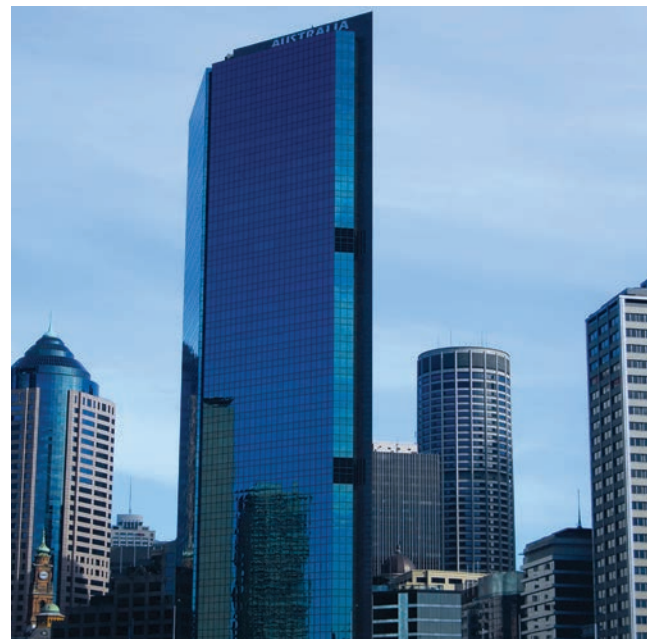
The Bega campus is a joint University of Wollongong, TAFE Illawarra and Bega High School facility. The university provides a number of undergraduate and postgraduate courses at the campus. Students have access to a wide range of services offered by the University of Wollongong and learning is supported by easy access to computers and information technology. Students benefit from a personalised study environment and small class sizes.

UOW SOUTHERN SYDNEY

UOW Southern Sydney brings university education to the local community of the Sutherland Shire. The campus is a joint initiative of the University of Wollongong and the Sydney Institute of TAFE. Students attending Southern Sydney have access to a range of services and learning is supported by easy access to information technology.

UOW SOUTHERN HIGHLANDS

UOW Southern Highlands commenced operation in 2002 and is a joint initiative of the University of Wollongong and Illawarra Institute of TAFE. The University of Wollongong Building is located in the grounds of the Moss Vale TAFE. The Moss Vale campus Library provides library services with experienced staff to assist students to access an excellent core collection of print, reserves and audiovisual materials as well as electronic databases and full text resources. University of Wollongong students also have access to the canteen, computer laboratory and student lounge.





UOW DUBAI

UOW established the University of Wollongong in Dubai (UOWD) in 1993. From humble beginnings with a handful of students, it is now one of the most prestigious educational institutions in the United Arab Emirates. UOWD currently has around 200 staff and 3650 students enrolled in 12 accredited undergraduate degree courses, 11 Masters and a highly regarded PhD course. It offers courses in Business, Finance, Computer Science, Engineering, International Studies and Media and Communications at its campus in Dubai's Knowledge Village.

UOWD is arguably Australia's most successful off-shore higher education facility. In 1999 it became the first foreign university to receive a licence from the Ministry of Higher Education and Scientific Research – a hugely important milestone. It was also the first western university to open an operation in the United Arab Emirates, and has built a reputation as one of the leading universities in the Gulf region, attracting students from across the Middle East, North Africa, the Indian sub-continent and beyond. UOWD's alumni include many UAE government employees, while UOWD has significant research and training partnerships with major UAE organisations and government departments as well as multinational corporations such as Mercedes Benz, Virgin and General Electric.

INTI INTERNATIONAL COLLEGE

Around 1000 students are currently undertaking UOW courses in Malaysia under a partnership with leading South-East Asian education provider INTI International University and Colleges. UOW offers a Masters degree in International Business and Bachelor of Commerce, Bachelor of Computer Science, Bachelor of Information Technology and Bachelor of Media and Communications degrees at INTI's campuses in Kuala Lumpur and on the island of Penang.

UOW also has long-standing partnerships with two of Singapore's leading private colleges, the Singapore Institute of Management (SIM) and the PSB Academy, to deliver internationally recognised academic programs in business, information technology and psychology. UOW also delivers a Master of Education degree in Teaching English as a Second Language (TESOL) at Thailand's Assumption University in Bangkok.



WORKING AT UOW

At UOW, we reward initiative, creativity and performance in an environment that develops staff and encourages the highest quality standards. Our status as a world-class university is reflected in our progressive workplace. Our people are vital for us to sustain our culture of excellence and innovation so we are committed to the growth and success of every employee.



MY NAME IS PROFESSOR CHRIS COOK.

I'm the Executive Dean of Engineering and Information Sciences at UOW and graduate of the University of Adelaide, with a double degree in Science and Electrical Engineering as well as a PhD from the University of New South Wales.



I think the collegial atmosphere at UOW is quite extraordinary. We're big enough to be internationally competitive, but small enough that we can run everything in a very friendly way.

IF I WERE TO DESCRIBE UOW IN ONE WORD I'D SAY "ENTREPRENEURIAL"



MY NAME IS UWANA EVERS.

I work for the Centre for Health Initiatives. I'm currently a PhD student in health promotion, and have undergraduate degrees in Psychology and Commerce.



For me the best thing about being a student at UOW is all the opportunities I've had. Studying overseas on exchange in Sweden and in Switzerland allowed me to see the world in a new and exciting way!

IF I WERE TO DESCRIBE UOW IN ONE WORD I'D SAY "OPPORTUNITY"



TEACHING & RESEARCH INFRASTRUCTURE

At UOW we provide all the amenities you would expect of a world-class university, from cutting-edge research and teaching environments, conference centres and the new Innovation Campus, to everything you need for education, business and entertainment.

RESEARCH AND DEVELOPMENT

Backed by internationally renowned research centres, our awarded Innovation Campus, and state-of-the-art facilities, we're leading the way in research and development.

SMART Infrastructure Facility: The first of its kind in Australia, SMART is a \$61 million centre of integrated laboratories which harness UOW expertise to address Australia's infrastructure needs – today and into the future. It is located on our main campus.

Illawarra Health and Medical Research Institute (IHMRI): IHMRI is a partnership between UOW and the South Eastern Sydney Illawarra Area Health Service. Through collaboration between academic and clinical researchers, IHMRI aims to directly benefit clinical practice and health service delivery. It is located on our main campus.

Australian Institute for Innovative Materials (AIIM): An Australian first, AIIM will use innovative fabrication methods to take multifunctional materials from fundamental research to the proof-of-concept stage. AIIM will transform traditional industries and form the basis for new high-tech health and energy manufacturing industries. AIIM is located at the Innovation Campus, in North Wollongong.

ARC Centre of Excellence for Electromaterials Sciences

(ACES): A multidisciplinary approach to solving some of the biggest challenges facing society – six Australian research strengths working with industry and researchers worldwide. ACES is also located at the Innovation Campus, in North Wollongong.

Sustainable Buildings Research Centre (SBRC): Leading the way to a restorative future, SBRC works to improve the energy-efficiency of new and existing buildings through advanced retrofit technologies, integrated component testing, skills training and ongoing research. The SBRC is located on our main campus.

Early Start: On schedule to open in 2015, UOW's \$44 million Early Start initiative is rapidly becoming a reality. Construction of the main facility at the Wollongong campus is underway and includes a Discovery Space with public access to innovative resources that stimulate learning experiences for children and families. With state-of-the-art teaching, research and community engagement facilities utilising enhanced technologies, the building will act as a hub connecting to a network of 38 partner centres in regional, rural and remote communities across NSW. Early Start will transform lives through education by driving social change to reduce current gaps in inequality. The focus is on 'investing' in the earliest years of life because of their influence on the development of the individual and the implications this has for the social and economic wellbeing of society. Early Start promises to create a landscape for learning and social change that is markedly different to the image traditionally associated with higher education.



STATE-OF-THE-ART SERVICES & FACILITIES

CAMPUS SERVICES

UOW is a thriving enterprise, servicing over 24,000 enrolled students, nearly 2,500 employees, and over 110,000 alumni worldwide. On campus, we provide all the amenities you would expect of a world-class university, from cutting-edge research and teaching environments, conference centres and the new Innovation Campus, to everything you need for education, business and entertainment.

UOW's state-of-the-art sport and recreation facilities are open to, and widely used by, the public. Many high profile Australian and international sporting teams have used UOW superb sporting facilities as training bases — from the United States and Australian national swimming squads to the Wallabies rugby union team and the St George Illawarra Dragons in the National Rugby League. But just as importantly, UOW makes its world-class facilities available for all kinds of community groups — from learn-to-swim classes to local primary and high schools staging their swimming carnivals in the international-standard 50metre pool, to junior coaching clinics, junior sports squads that train and play on the sports fields and people attending fitness classes at Wollongong's best-equipped gymnasium.

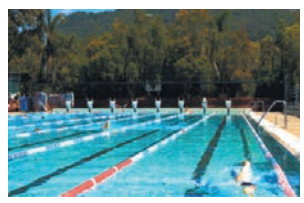
Other facilities at the University Recreation and Aquatic Centre (URAC) include high quality cricket fields, a field for rugby and AFL, a championship-standard hockey field with artificial surface, tennis courts, physiotherapy centre, indoor courts for basketball, netball and volleyball and a sports hall (called the Sports Hub). UOW teams competing in sports like men and women's hockey, AFL, rugby union, rugby league and cricket, host visiting teams at the campus for matches. URAC also houses the headquarters of the Illawarra Academy of Sport. As part of this support of junior sport in the region, URAC also accommodates regional development officers for NSW-ACT AFL, NSW Rugby Union and NSW Tennis. In April 2012 URAC was the headquarters for the NSW Academy Games, hosted by the Illawarra Academy of Sport. More than 700 emerging athletes took part in the Games, which will be hosted in Wollongong until 2014.

- CAFES & EATERIES
- TEACHING & RESEARCH
- RETAIL
- SPORT & REC
- ADMIN

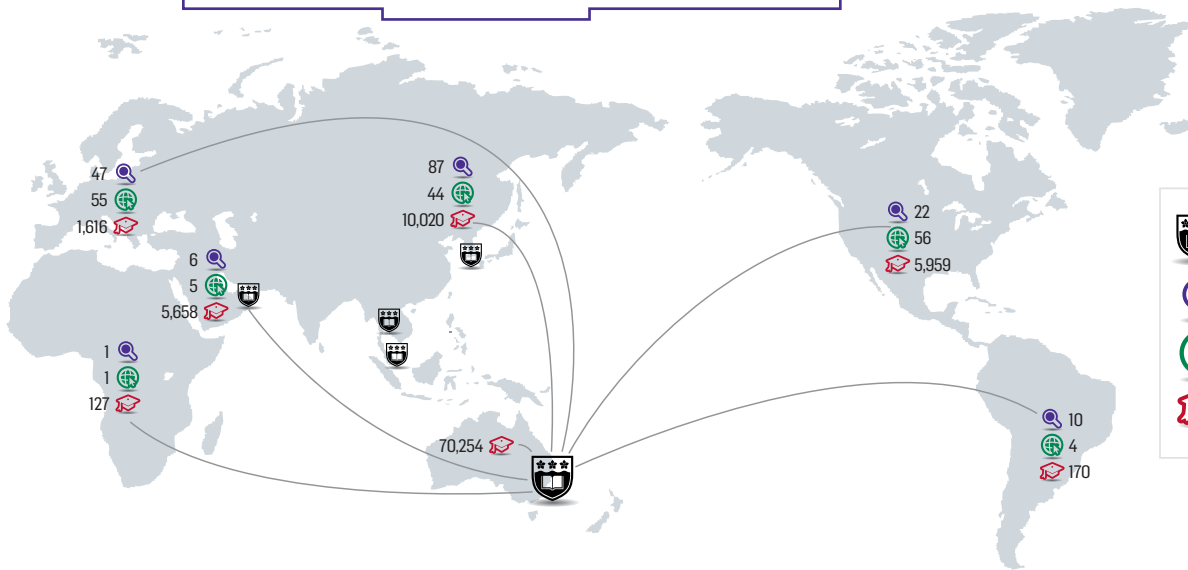
KEY FACTS:

<p>9</p> <p>CAMPUSES</p>	<p>DEGREES</p> <p>450</p>	<p>2,353</p> <p>EMPLOYEES</p>	<p>RETAIL SHOPS</p> <p>20</p>
---------------------------------	----------------------------------	--------------------------------------	--------------------------------------

- 9 campuses
- Over 20 commercial retail operators
- 2,353 direct employees
- 450 degrees on offer



GLOBALLY CONNECTED



- UOW Campus/Programs
- Academic/Research Collaboration (Number of Institutions)
- Study Abroad/Exchange (Number of Institutional collaborations)
- Alumni (Number of UOW Graduates)

ACADEMIC / RESEARCH COLLABORATIONS

INSTITUTIONAL
213
COLLABORATIONS

STUDY ABROAD AND STUDENT EXCHANGE

FORMAL LINKS
166
WITH OTHER UNIS

UOW STUDENTS
3,167
HAVE STUDIED OVERSEAS

OUR ALUMNI

LIVE IN
143
COUNTRIES

FROM OTHER UNIS
9,466
STUDIED AT UOW



ABOUT THE FACULTY OF SCIENCE, MEDICINE AND HEALTH

RESEARCH ENVIRONMENT

The Faculty received National recognition for its research performance through the Excellence in Research for Australia (ERA) Initiative, receiving the highest ERA rating for research quality (well above world standard) in the overall field of Chemical Sciences. Individual disciplines which ranked well above world standard included Analytical Chemistry, Physical Chemistry, Geology and Clinical Sciences.

Since 2009, Faculty researchers have secured research and innovation income worth over \$103 million on projects ranging from investigations of human evolution out of Asia, the measurement of greenhouse and other trace gases in the southern hemisphere towards an understanding of climate change, through to investigating the relationship of antipsychotic drugs with obesity and related metabolic disorders. Three recognised research strengths of the University of Wollongong are located within the Faculty: Centre for Archaeological Science (CAS); Centre for Medical & Molecular Bioscience (CMMB); and GeoQuEST Research Centre (GEOQ). The Faculty is well-resourced with excellent facilities and infrastructure.

TEACHING AND LEARNING

Teaching and learning in the Faculty of Science, Medicine and Health has achieved national recognition. The University of Wollongong was one of only four universities in Australia to score in the Band A in all four discipline groupings, including Health and Science, in the Federal Government's 2009 Learning and Teaching Performance Fund. The Faculty is committed to enhancing the Student Experience and our academics are highly focused on exploring opportunities to enhance the learning and teaching curricula. Recent initiatives include the development of: a learning oriented assessment process that focuses on providing students with detailed feedback to progress their learning; strategies to identify and manage 'at-risk' students; and an online education portal to showcase and share learning resources and outstanding student work. Our academics are regular recipients of learning and teaching awards and grants.

QUALITY

The Faculty is executing a detailed strategy to ensure that all our courses meet the standards of the Australian Qualifications Framework. We have a strong commitment to quality and undertake rigorous reviews of our courses through a number of mechanisms including curriculum review, subject evaluations, student focus groups and liaison with academics.

PARTNERSHIPS

The Faculty of Science, Medicine and Health actively engages with partners through a broad range of mechanisms, including curriculum review processes, events, joint programs with TAFE, visiting programs for international and nationally renowned academics, prizes and awards to students, sponsorships, alumni activities and research and commercial consultancy.

THE GRADUATE SCHOOL OF MEDICINE (GSM)

As a new school, the GSM offers a supportive environment in which teamwork underpins the development and delivery of the new MBBS degree. The mission of the GSM is to produce excellent medical practitioners with a commitment to patient-centred, evidence-based, reflective and cost-effective medical practice. Our graduates have the capacity and desire to contribute to the enhancement of health for patients in all geographic settings, but particularly in regional, rural and remote communities.

ABOUT THE FACULTY OF SCIENCE, MEDICINE AND HEALTH CONT...

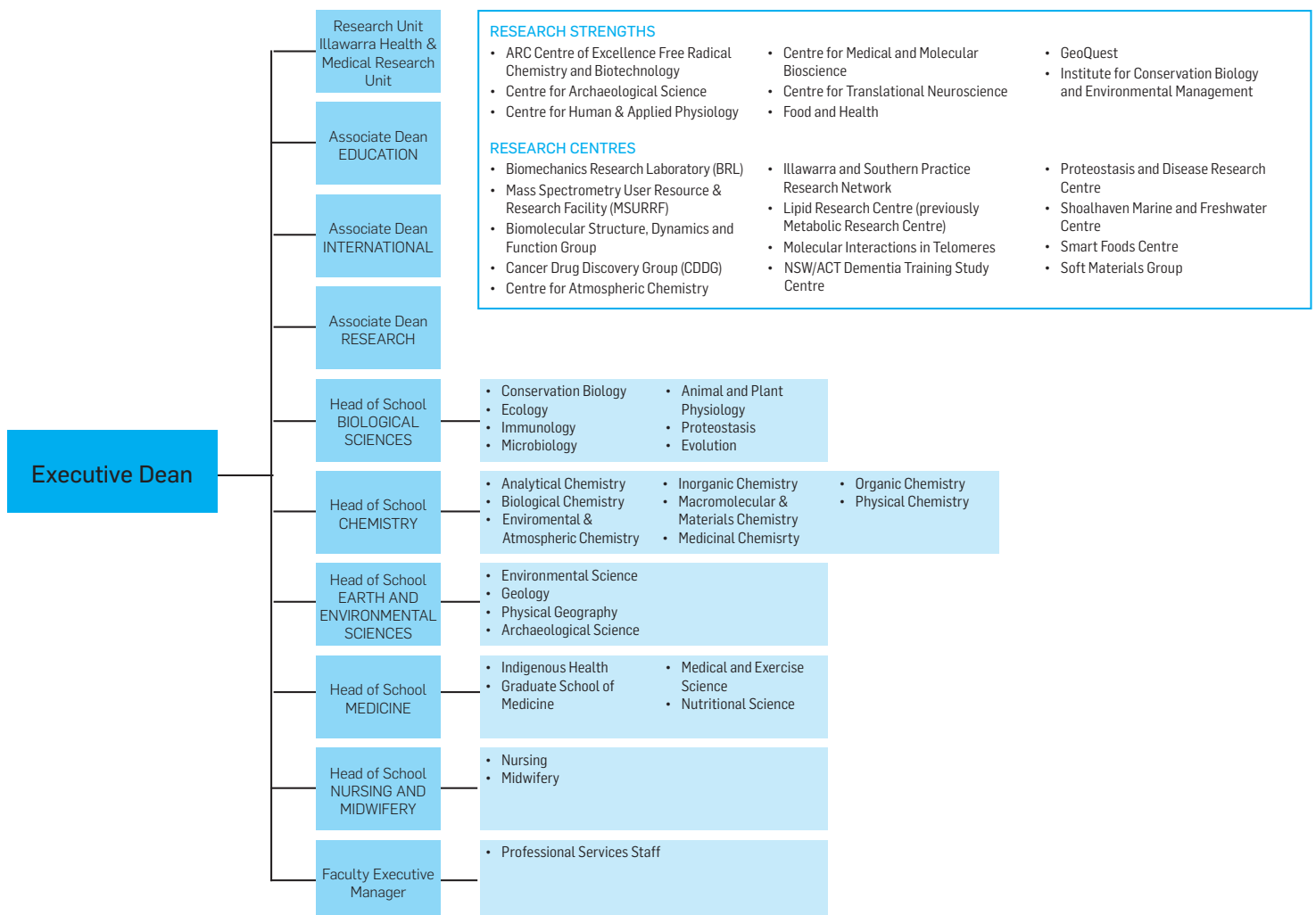
This mission is achieved by delivering an outcomes-focussed, clinically-guided curriculum that is complemented by clinical skills laboratory learning experiences, and the provision of community-based, clinical educational opportunities. These clinical experiences include placements in general practice and specialists' surgeries, large and small hospitals, and community agencies. The GSM operates primarily on two campuses, located in Wollongong and Shoalhaven, as well as in numerous rural sites throughout NSW. Curriculum is delivered equitably in an integrated fashion to this geographically distributed environment.

The GSM also recognises the importance on research for the benefit of students and the community. In particular it recognises the importance of research concerning health of and the illnesses that affect regional, rural and remote communities.

FACULTY STRUCTURE

The Faculty of Science, Medicine and Health is comprised of the Schools of Biological Sciences, Chemistry, Earth & Environmental Sciences, Medicine and Nursing & Midwifery. The Faculty delivers innovative teaching and leading research in the fields of science, medicine and health, and strives to connect students, business and community at the rural, regional, national and global levels.

The Faculty has 5,120 undergraduate and postgraduate students onshore and offshore, supported by 292 academic staff and 136 professional services staff. In addition to the Wollongong campus, we operate on 4 regional campuses (Batemans Bay, Bega, Shoalhaven and Southern Sydney) and numerous rural sites throughout NSW.





PROFESSOR OF MEDICAL & EXERCISE SCIENCE, FACULTY OF SCIENCE, MEDICINE AND HEALTH: POSITION SUMMARY

POSITION INFORMATION

- The position provides a unique opportunity for an exceptional senior academic to provide vision and leadership for the newly formed Discipline of Medical & Exercise Science in the School of Medicine.
- The primary role of the position is to foster excellence and innovation in research and teaching in the domains of Medical & Health Science, Exercise Science & Rehabilitation, and Clinical Exercise Physiology.
- The position holder will fully develop the Discipline's research potential.
- Provide insight into innovative curricula design in order to establish an international profile of excellence for Medical & Exercise Science.



SELECTION CRITERIA

ESSENTIAL:

Education & experience:

- PhD with a distinguished record of scholarship and excellence in research, displaying ongoing performance and demonstrated research leadership in the development of research teams.
- Eligible to be accredited by the Exercise and Sports Science Australia.
- High levels of success as chief investigator in national competitive grants, particularly NH&MRC and ARC grants, and other sources of external research funding.
- Distinguished level of publication success in internationally refereed-high impact research journals.
- Demonstrated success in postgraduate and postdoctoral supervision.
- A track record of innovative leadership in developing collaborations with researchers, and professionals in industry, community or government-based organisations.

Personal attributes:

- Leadership qualities .
- Determination and dedication to task.
- Enthusiasm and empathy for role.
- High level of self-management and self awareness.
- Team membership and team building skills.

Knowledge & skills:

- An outstanding record of research and teaching excellence and innovation in one of the following areas: Exercise Science, Exercise Rehabilitation, Clinical Exercise Physiology or Medical & Health Sciences.
- Established publication, professional and/or scholarly track record demonstrating knowledge across more than one of the above areas.
- An outstanding track record of research investigating the effects of exercise interventions on quality of life, including knowledge of the requirements for the successful conduct of clinical trials and for the publication of results in high impact journals.
- A record of effective leadership and management of academics in a University or Research Institute setting.
- Experience in the management of more than one of the following structures; research centre or institute, university department, school or faculty (or similar structures).



LIFESTYLE

Situated on the beautiful south coast of New South Wales (NSW) at the foot of the Great Dividing Range, Wollongong offers a relaxed and healthy lifestyle in a temperate climate.

Wollongong, one of Australia's most liveable cities, is a thriving regional centre. It boasts cosmopolitan dining, a lively arts scene, regular local and visiting performing arts and musical productions, and professional sports teams. While the picturesque Illawarra region provides a multitude of weekend getaways, Sydney is also within easy reach. Of course, UOW adds to the economic and cultural wealth of one of Australia's most liveable cities, and connects with local communities through a range of collaborative programs.

CULTURE AND THE ARTS

Artists have long been inspired by the majestic Illawarra region, and the Wollongong City Gallery is a great place to enjoy many of their works, alongside a permanent collection of contemporary Aboriginal art. The Illawarra Performing Arts Centre showcases the work of local and touring opera companies, musicals, comedy, ballet and concerts. The WIN Sports & Entertainment Centre also hosts cultural events, concerts and other large-scale productions.

Close to UOW's main campus you will also find the Wollongong Conservatorium of Music, which overlooks the Botanic Gardens and provides music education to the community. It attracts students from all backgrounds and of all ages, abilities and interests.

HEALTH

Wollongong's quality health infrastructure includes a major teaching hospital and a number of excellent private hospitals. The city also has an extensive network of health specialists, many of whom are associated with the UOW's Graduate School of Medicine and the Illawarra Health and Medical Research Institute. Wollongong has a total of nine public hospitals and four private hospitals, as well as 24 private nursing homes.

SCHOOLS

The city and surrounding Illawarra region has around 140 government primary and secondary schools and more than 50 fee-based independent schools and colleges. The city's comprehensive high schools are complemented by four specialist high schools: Wollongong High School for the Performing Arts, Keira Technology High School and the selective Smiths Hill High School, all in Wollongong, and Illawarra Sports High School at Berkeley in the southern suburbs



The Friday farmers markets in Wollongong CBD



Gleniffer Brae:
Home of the Wollongong Conservatorium of Music, is just a 2min walk from main campus



There are numerous quality schools to choose from



LIFESTYLE CONT...



RECREATION

Boasting some of the world's most pristine beaches, the region is also home to impressive golf courses, state-of-the-art sports facilities, parks, and cycling and walking paths. The city's spectacular natural setting provides many recreational opportunities, from surfing, fishing and diving, to mountain climbing, hand-gliding and bushwalking.



SPORT

Sport plays a big role in the lives of Wollongong's residents. With its numerous sports facilities, and fabulous golf courses, it's not hard to see why. WIN Sports & Entertainment Centre hosts many sporting events, and is home to the St George Illawarra Dragons National Rugby League team as well as our very own professional basketball team, Wollongong Hawks. The Illawarra Academy of Sport also provides sports coaching and education programs for its scholarship athletes, with the main aim being to improve sporting ability and to equip athletes with skills which will enhance their prospects of future success.



ENTERTAINMENT

With a number of movie complexes, shopping centres, bowling alleys and restaurants, there is always something to do in Wollongong. The WIN Entertainment Centre hosts many concerts and shows for all ages, while Wollongong is also home to many fine dining experiences. Wollongong has many shopping complexes and hosts local produce and art and craft markets. At night, there are a number of clubs, pubs and hotels.



TRANSPORT

There are many ways to get around the city of Wollongong. The Green Shuttle bus circulates the Wollongong area, connecting the beach, city, Innovation Campus, UOW colleges and the University itself. This is free service that runs 7 days a week. The UOW shuttle bus operates in the surrounding suburbs of the University as well as to and from North Wollongong train station. There is also an extensive train service connecting Sydney and its suburbs.

For more information about the City of Wollongong:

www.uow.edu.au/about/wollongong





HOW TO APPLY

The University of Wollongong is being assisted in this appointment process by the executive search consultants at Carol Watson and Associates. For a confidential discussion of the role and the University's expectations, please contact Denise Wiseman on +61 412 403 567 or denise@carolwatson.com.au

When submitting an application, the following information is required (all documents in Word):

FULL CURRICULUM VITAE

Candidates are asked to set out in the curriculum vitae the nature of the most recent and significant career appointments, including details of key achievements and should include:

- Full name
- Postal Address
- Confidential landline
- Mobile Telephone numbers
- Confidential Email address
- Degrees and qualifications and dates awarded
- Positions held, including details of present position
- Full list of publications
- Details of leadership, management and/or professional experience
- Contributions to professional associations, societies and community activities.

CANDIDATE STATEMENT

In no more than four pages, outline your suitability for the role (with reference to the selection criteria), your vision for the role (covering what you would want to achieve for the faculty over the next three years and how you would go about it); and how at the end of three years, the Vice-Chancellor would measure your success.

REMUNERATION

An Indication of your current remuneration package and its component parts.

REFEREES

The names and present positions of four potential referees.

Referees need not be alerted in advance as they will not be contacted without the prior approval of the applicant.

DATE OF COMMENCEMENT

An indication of the date of your availability to commence at the University.

CLOSING DATE

The closing date for applications is close of business on 28 April 2014 (AEDT).

INDICATIVE DATES

Shortlisting date is currently scheduled for 21 May 2014. Interviews with shortlisted candidates are scheduled for 6 June 2014. Please note these dates may change slightly.