



INTERNATIONAL PROSPECTUS 2014

DARWIN, NORTHERN TERRITORY

RESEARCH
POSTGRADUATE
UNDERGRADUATE
VET
ENGLISH



Welcome from the Vice-Chancellor

As you browse through this International Prospectus you will find detailed information about courses and studying at CDU.

You will find CDU a dynamic and youthful university that offers our students an authentic Australian experience, in this most northerly region of Australia, one of the oldest and biologically most diverse landscapes on the planet. Due to our close proximity to Asia, we are an outward looking and progressive university, with well established teaching and research partnerships with universities in our region, China, India, Indonesia, Malaysia, Philippines, Timor Leste and Vietnam, as well as our partner universities in the USA and Europe. Our international students, from more than 55 different countries, enrich the cultural diversity of campus life and learning experience of all our students.

At CDU you will find a high quality and research intensive university, ranked in the top 2% of universities in the Times Higher Education Ranking, 2012. You will find a university committed to excellence in teaching and research and a member of the prestigious Australian Innovative Research Universities group.

CDU is a friendly and helpful place to study. We have an excellent student to staff ratio, and you will be supported to achieve your potential by high quality and committed staff, excellent teaching resources and facilities.

Your choice of university is one of the most important decisions you will make. I am sure you will make the right choice for your future education and career. At CDU I am confident that we can help you achieve your ambitions.

I look forward to welcoming you to Charles Darwin University.

Professor Barney Glover

Vice-Chancellor, Charles Darwin University

Contents

- 3 WELCOME TO CHARLES DARWIN UNIVERSITY
- 4 ABOUT CHARLES DARWIN UNIVERSITY
- 6 ABOUT DARWIN & THE NT
- 8 STUDENT SUPPORT & SERVICES
- 10 TEACHING & LEARNING SUCCESS
- 12 ACCOMMODATION & LIVING EXPENSES
- 14 STUDENT VISA INFORMATION
- 16 RESEARCH INSTITUTES & CENTRES
- 18 EXCELLENCE IN RESEARCH
- 20 ACADEMIC ENTRY REQUIREMENTS
- 22 ENGLISH LANGUAGE ENTRY REQUIREMENTS
- 24 THE APPLICATION PROCESS
- 26 FREQUENTLY ASKED QUESTIONS
- 28 COURSES FOR INTERNATIONAL STUDENTS
 - Arts & Creative Arts 28
 - Building Design & Architecture 32
 - Business & Commerce 34
 - Education 42
 - Engineering 48
 - Environmental Science 54
 - Health Sciences 58
 - Hospitality 64
 - Indigenous Studies 68
 - Information Technology 72
 - Law & Legal Studies 76
 - Science 78
 - Social Work & Community Studies 80
 - Postgraduate Research 82

86 IMPORTANT DATES

Welcome to Charles Darwin University

Charles Darwin University (CDU) offers exciting academic opportunities and globally respected qualifications in one of the world's most culturally and biologically diverse regions. Students studying at CDU have come from all parts of Australia and from more than 55 different countries around the world. Diversity and opportunity are the hallmarks of CDU, Australia's most youthful university.

A World of Opportunity

Successful graduates can be confident of a recognised qualification enabling a world of career and employment choices, whether returning home to develop career prospects or pursuing a career in the Northern Territory.

The Northern Territory offers excellent opportunities for a well-paid career and life in Australia as a permanent resident. The Northern Territory is an expanding economy with a high demand for skilled and qualified workers in business, engineering, IT, tourism and hospitality, health, education, human resource management, communication and the services sector. The Northern Territory Government welcomes eligible CDU graduates to explore opportunities for full-time work and permanent residency through its migration sponsorship program. www.migration.nt.gov.au
www.immi.gov.au



About Charles Darwin University

Quality Assurance

The Tertiary Education Quality and Standards Agency (TEQSA) is Australia's independent national regulator of the higher education sector.

The Agency regulates and assures the quality of Australia's large, diverse and complex higher education sector, and registers and assesses the performance of higher education providers against the Higher Education Standards Framework. www.teqsa.gov.au

Consequently, International students can be confident of the quality of teaching and qualifications at CDU.

The Australian Qualifications Framework (AQF) is an Australian Government national system that regulates all Australian qualifications to ensure a high standard of Australian qualifications throughout the country. The AQF contributes to the worldwide recognition of Australian qualifications.

The Education Services for Overseas Students (ESOS) Act 2000 requires education providers to meet nationally consistent standards in education quality, facilities and services. The ESOS Act ensures that international students studying in Australia receive the same standard of education as Australian students.

Education providers that offer courses for international students must be registered on the Australian Commonwealth Register of Institutions and Courses for Overseas Students (CRICOS) and demonstrate that their courses, services and facilities meet Australian standards. Charles Darwin University is a CRICOS registered provider in the Northern Territory, Victoria and New South Wales. The University complies with the ESOS Act and the AQF and delivers a high standard of education. www.dest.gov.au/esos www.studyinaustralia.gov.au

Study Locations

Darwin

The Casuarina campus is the main University campus located 14 kilometres from the city centre. The beautiful 56 hectare tropical campus in lush tropical gardens, comprises state-of-the-art facilities, including specialised Science, Engineering, Health, Medical and Pharmacy laboratories.

The campus is close to the beach and Darwin's largest shopping precinct. It is serviced by public transport and is connected to the suburbs and city centre by extensive cycle tracks. The majority of CDU's international students study at this campus.

Charles Darwin University is an Australian University with a difference. Located in the Northern Territory of Australia, a unique region covering the wet tropics in the north and arid desert in the south, this is a place for students who love freedom, welcome choice, respect learning, have a sense of adventure and appreciate one of the oldest landscapes and cultures on earth.

The Palmerston campus is located 20 kilometres from Darwin's city centre and within walking distance of Palmerston city centre. The campus has modern state-of-the-art facilities, including a training kitchen, bakery and bar, and a commercial training restaurant.

International students may have the option of studying at one of CDU's regional campuses in Alice Springs or Katherine.

In 2014 Charles Darwin University, School of Business will open a new campus in the Darwin CBD.

Melbourne & Sydney

CDU offers selected degree courses in Melbourne and Sydney. Courses are delivered in accordance with CDU policies, processes and admissions requirements. Students are enrolled as CDU students and follow the same CDU curriculum and assessment and will graduate with a degree from Charles Darwin University.

CDU Melbourne is in association with Australian Technical and Management College (ATMC). www.cdumelbourne.com
CDU CRICOS PROVIDER NO. 00300K (VIC)
ATMC CRICOS PROVIDER NO. 03013D

CDU Sydney is administered by Charles Darwin University www.cdu.edu.au/international/sydney
CDU CRICOS PROVIDER NO. 03286A(NSW)

Scholarships

- The Vice-Chancellors International High Achievers Scholarship offers a number of partial tuition fee waivers to eligible students based on demonstrated academic merit.
- The Australian Government has an extensive scholarship program and eligible students can choose to study at CDU.
- Other scholarship options may be available through foreign governments, international organisations or other funding bodies.

Further information is available at: www.cdu.edu.au/international/future-students/scholarships



About Darwin & the NT

Australia's Northern Territory offers a unique and unforgettable living and educational experience. It is world famous for its scenic natural wonders in one of the world's oldest landscapes, prolific wildlife, and access to first hand experience of an ancient Aboriginal culture. Students can experience the stunning landscapes of World Heritage Kakadu National Park, Katherine Gorge (Nitmiluk) and Uluru. Local people are warm, friendly and welcoming.

The Northern Territory is one of Australia's fastest growing economies in 2013, with growth set to continue due to major projects in mining and construction.

The Darwin lifestyle

Darwin is the capital city of the Northern Territory and Australia's only tropical capital coastal city. It is a young and vibrant city with a strong economy. The Darwin lifestyle offers:

- modern, clean, safe and friendly city in a tropical climate
- a relaxed outdoor lifestyle in unspoiled surroundings and beaches
- easy to get around by cycle, bus or walking
- international airport with direct flights to and from Singapore, Bali and Manila
- a variety of shopping with major supermarkets and retailers, boutiques and open air markets offering food, arts and crafts
- restaurants, museums, art galleries, theatres, cinemas and festivals
- recreational and sporting activities including fishing, sailing, rock climbing, golf, tennis, football, soccer, rugby and more



Darwin Waterfront Precinct - Home of CDU's School of Business from 2014

Fast facts about the Northern Territory

1

Australia's 3rd largest region

Larger than France, Germany and Poland combined, the Northern Territory covers more than 1.4 million square kilometres.

2

Youthful population

Median age of the NT population is 31 years, compared with a national median age of 38 years.

3

Excellent career prospects

The NT has a low unemployment rate of just 4.5%.

4

Tropical climate

The average temperature ranges from 23 to 32 degrees Celsius. The average rainfall in the NT is 1708mm per year.



Student Support & Services

International Student Support

CDU's International Support Team provides dedicated advice and support on a range of matters related to studying as an International student.

www.cdu.edu.au/international

Academic Support

International students can access tutoring, workshops and seminars to assist with improving academic skills.

www.cdu.edu.au/lba/all/allsp/

English Language Support

The University offers a range of English language support for international students, including conversation classes and academic English workshops.

Careers and Employment Support

The Careers and Employment team is available to assist students identify potential career interests. The team also provides practical assistance with developing the skills to gain and maintain employment. CDU hosts Careers Fairs on-campus to give students an opportunity to meet and discuss their future career plans with local and national employers.

www.cdu.edu.au/careers

Complaints & Grievances

The University's complaints and appeals processes are designed to resolve student complaints regarding academic or administrative matters transparently and effectively with respect for student confidentiality and privacy.

www.cdu.edu.au/oloc/concerns-complaints.html

Off-campus Accommodation Support

The Accommodation Officer is able to assist new and continuing students in finding appropriate off-campus accommodation while studying at CDU.

www.cdu.edu.au/ses/accommodation.html

Student Counselling

CDU provides professional, confidential and free counselling services to students. Counselling staff have expertise in assisting students with a wide range of personal, academic and cross-cultural issues to assist in adjusting to life in a new environment and the transition to university study.

www.cdu.edu.au/ses/student-support.html

Banking

A Westpac Bank Automatic Teller Machine (ATM) is located at the Casuarina campus. The Post Office on the Casuarina campus is an agent for the Commonwealth Bank and has withdrawal and deposit facilities.

Transport

A bus stop is located at the entrance of both Casuarina and Palmerston campuses. Buses run at regular intervals all week and on weekends. Bus fares are discounted to \$1AUD for CDU students.

A free bus service operates between Casuarina and Palmerston campuses Monday to Friday each week. Timetables are available at the beginning of the semester.

Bookshop

The University Bookshop on the Casuarina campus supplies textbooks, stationery and other study materials.

www.cdu.edu.au/bookshop

Post Office

The Post Office is located on the Casuarina campus and provides full postal services as well as international phone cards.

www.cdu.edu.au/current-students/postoffice

Childcare

The University Childcare Centre at Casuarina campus is nationally accredited to care for up to 50 children from ages 6 weeks to 5 years. The demand for places is strong and places are limited. Other childcare options are available off-campus.

www.cdu.edu.au/fas/childcare.html

CDU Sport

CDU Sport operates a full service fitness centre on the Casuarina campus which CDU students can access at a discounted rate.

www.cdu.edu.au/sport

International Student Lounge

The University has two international student lounges located on the Casuarina campus. The lounges boast a kitchenette with tea and coffee making facilities and a microwave and fridge, and are fully air-conditioned. They are a great place for students to eat their lunch, study or relax.

CDU Students' Association

The CDU Students' Association (CDUSA) is run by students for students, and its aim is to further the welfare of students and represent the interests of students to the University, government and the community.

www.cdu.edu.au/cdusa

Migration Seminars

The NT Government Department of Business attends Casuarina campus twice a year to present a seminar on the opportunities available in the Northern Territory to students who wish to migrate to the NT following their studies.

www.migration.nt.gov.au

Ethnic Community Groups

The Northern Territory has a diverse multicultural population and is home to a wide range of ethnic community groups. International students are invited to join and participate in these multicultural groups and events.

www.mcnt.org.au

www.mcnt.org.au

Worship & Religious Services

Darwin has a wide range of religious services, including places of worship for Christian, Hindu, Buddhist, Islamic and many other religions.

Teaching & Learning Success

LEARNING SPACES

The Learning Precinct in the Casuarina campus library is one of the many learning spaces on-campus, with individual student and collaborative workstations. Students can gain access to fully equipped computer laboratories 24 hours a day.

LIBRARY

The University houses over 300,000 items in the Casuarina campus library, with online access to over 17,000 international journals. Library staff hold free workshops, aimed at assisting students to become more effective students and researchers. www.cdu.edu.au/library

ASSESSMENT METHODS

Regular written assignments, tutorial participation, practical work, projects, research reports, short tests, semester exams, seminar presentations and final examinations may form part of the assessment. VET courses are assessed on a competency basis. Detailed information on assessment rules and guidelines is available at:

www.cdu.edu.au/governance/documents/AssessmentRules.pdf

SMALL CLASS SIZES

Class sizes at CDU are small, providing more personalised teaching.

TEACHING METHODS

Classes at the University generally incorporate lectures and tutorials, with seminars, presentations, intensive workshops, field work and laboratory practicum also used as part of the teaching methods.

Accommodation & Living Expenses



On-campus Accommodation

International House Darwin (IHD) is located on the Casuarina campus and provides a safe and secure residential community. IHD has 334 rooms in 16 self-standing multi-level buildings. A free inter-campus shuttle bus to Palmerston campus operates during the semester.

IHD's weekly rate includes:

- king-sized single bed
- airconditioning and a ceiling fan
- small fridge, desk, chair and lamp
- wardrobe
- bed linen and towels
- electricity and water
- wireless internet access
- access to all common rooms and facilities
- workshops and seminars
- social activities
- mentors

How to apply

- Apply online via the IHD website. There is a high demand for on-campus accommodation and you should apply as early as possible to avoid missing out on a room.

www.cdu.edu.au/ihd

General Living Expenses

As a condition of your student visa you must have sufficient funds to pay all the costs of studying in Australia, including tuition fees, living expenses, Overseas Student Health Cover, return airfares and visa fees. Students should not expect to fund their studies and living costs in Australia through part-time employment.

The Australian Government recommends a single student budget of \$18,610 AUD per year for living expenses. Accommodation costs, either on or off campus are a large component of living expenses. Allowance should be made for recreation, emergencies and health expenses not covered by OSHC. Exchange rate variations may also affect budgeting. A married student will need an additional \$6,515 AUD per year for a spouse and \$3,720 AUD per year per child.

www.immi.gov.au/students/student-visa-living-costs.htm



Kitchen in IHD Apartments

Initial Accommodation Expenses (\$AUD)

Expense (Single student)	Off-campus (share accommodation)	On-campus (standard room, 2013 rates)
Accommodation bond (equivalent to four weeks rent)	\$600 - \$1000	\$714
Two weeks rent in advance	\$300 - \$500	\$357
Utility connection fees	\$140	\$0
TOTAL	\$1,040 - \$1,640	\$1,071

Off-campus rental accommodation is commonly unfurnished; therefore the purchase or rental of furniture and appliances will be an additional expense.

Estimated Weekly Expenses (\$AUD)

Expense (Single student)	Off-campus (share accommodation)	On-campus (standard room, 2013 rates)
Rent	\$150 - \$250	\$178.50
Electricity, gas, water	\$30	\$0
Telephone, internet	\$20	\$10
Food, groceries	\$80	\$80
Public transport	\$15	\$15
Clothing, medical	\$10	\$10
Entertainment	\$30	\$30
Printing, stationery	\$10	\$10
TOTAL	\$345 - \$445	\$333.50

Text books can be a considerable cost, which varies depending on the course. This is normally an upfront cost at the beginning of each semester. Second hand books may be available for purchase to help reduce this expense.

Student Visa Information

Overseas Student Health Cover

Overseas Student Health Cover (OSHC) is compulsory for student visa holders. Allianz is the preferred OSHC provider for CDU.

2013 OSHC Allianz Rates (\$AUD)

Months	Single	Family
12	\$519	\$1,180
18	\$778	\$1,901
24	\$1,037	\$2,622
36	\$1,602	\$3,922

www.oshcallianzassistance.com.au

Part-time employment

- excellent part-time and casual employment opportunities in supermarkets, shops, restaurants and hotels
- student visa holders are entitled to work up to 40 hours per fortnight during the semester and full-time during university vacation periods
- NOTE: International students should not expect to cover the costs of tuition fees or living expenses from casual or part-time employment. The average wage for casual employment is \$17 AUD per hour.

www.cdu.edu.au/careers
www.immi.gov.au

Post-study work rights

- Bachelors and Masters by coursework graduates will be eligible for two years post-study work rights
- Masters by Research graduates will be eligible for three years post-study work rights
- PhD graduates will be eligible for four years post-study work rights

Further information can be found at:
www.immi.gov.au/students/knight

Students supporting dependents

A student bringing a spouse or children to Australia must demonstrate that they have enough money to support them before the Australian Government will issue a visa. It is a condition of the dependant visa that all children between the ages of 5 and 18 must attend school full-time. School fees are indicated below and childcare costs (for children under the age of 5) of up to \$80 per day also need to be considered.

2013 International School Fees (\$AUD)

Category	Annual Fee
Application Fee	\$220
Primary	\$7,370
Junior Secondary	\$9,770
Senior Secondary	\$10,910

www.det.nt.gov.au/students/international-services/

Student obligations

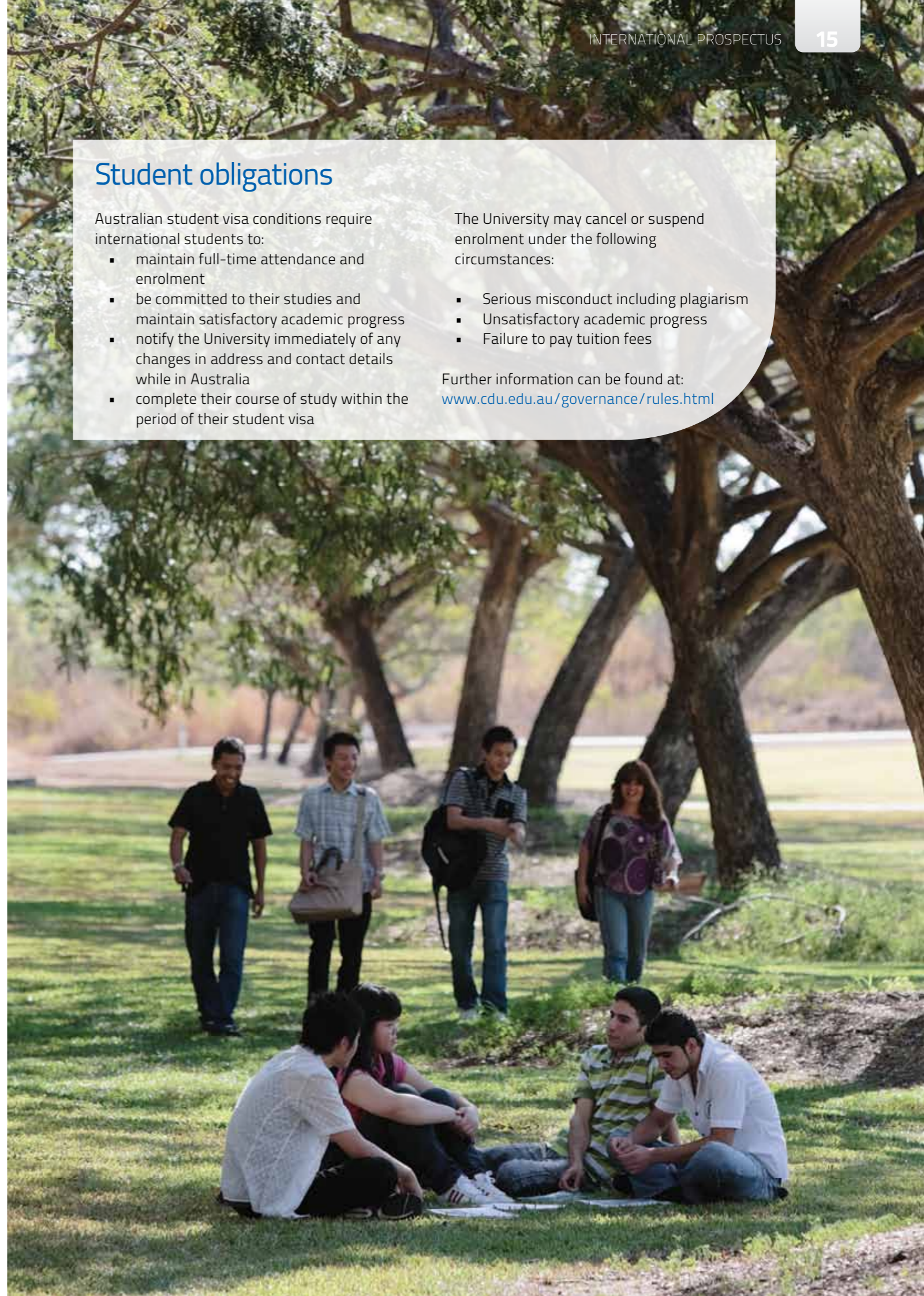
Australian student visa conditions require international students to:

- maintain full-time attendance and enrolment
- be committed to their studies and maintain satisfactory academic progress
- notify the University immediately of any changes in address and contact details while in Australia
- complete their course of study within the period of their student visa

The University may cancel or suspend enrolment under the following circumstances:

- Serious misconduct including plagiarism
- Unsatisfactory academic progress
- Failure to pay tuition fees

Further information can be found at:
www.cdu.edu.au/governance/rules.html



Research Institutes & Centres

The University places a high priority on multidisciplinary and applied research through the following Research Institutes and Centres:

- The Research Institute for Environment and Livelihoods
- Menzies School of Health Research
- The Northern Institute
- The Australian Centre for Indigenous Knowledges and Education
- The Research Centre for Human Health and Wellbeing
- The North Australian Centre for Oil and Gas
- The Centre for Renewable Energy

The Research Institute for Environment and Livelihoods

The Research Institute for the Environment and Livelihoods (RIEL) is well positioned and equipped to deliver world class science in our region, with its rich and diverse natural and cultural landscapes and seascapes. RIEL research across the social and natural sciences is delivered through five themes:

- Coastal and Marine Ecology and Management
- Freshwater Ecology and Management
- Savanna Management and Wildlife Conservation
- Tropical Resource Futures

<http://riel.cdu.edu.au>

Menzies School of Health Research

Menzies School of Health Research (MSHR) is a national leader in health, education and research training. MSHR has made a difference in peoples' lives for more than a quarter of a century. It specializes in Indigenous and tropical health research, working with more than 60 Indigenous communities across Australia and in developing countries in our region, breaking the cycle of disease and improving health and wellbeing of communities.

www.menzies.edu.au

The Northern Institute

Research teams in The Northern Institute (TNI), led by internationally and nationally recognised scientists, develop research in the areas such as:

- demography and growth planning
- transdisciplinary methodologies and knowledge systems
- social inclusion and community engagement
- remote workforce development and pathways with training and social sustainability

www.cdu.edu.au/engit/renewable_energy

Charles Darwin University has an international reputation for research excellence. The University is ranked in the top 2% of universities in the world in the prestigious Times Higher Education Ranking 2012–2013 and ranked 4th in Australia for Environmental Sciences and Ecology in an analysis of Australian and New Zealand top research institutions by Thomson Reuters in 2011.

The Australian Centre of Indigenous Knowledges and Education

The Australian Centre of Indigenous Knowledges and Education (ACIKE) is a joint partnership between Charles Darwin University and the Batchelor Institute of Indigenous Tertiary Education (BIITE). ACIKE will be a national leader in transformative teaching and learning, research and community engagement.

www.cdu.edu.au/acike

The Research Centre for Health and Wellbeing

The Research Centre for Health and Wellbeing aims for excellence in health and wellbeing research as it relates to individuals and families in their community contexts. The areas of research strength include:

- health workforce, knowledge transfer into policy, interdisciplinary health care and health outcomes.
- Indigenous health and well-being
- psychosocial aspects of well-being and health care
- clinical research
- humanitarian and disaster management and social justice approaches to social work.

www.cdu.edu.au/health-wellbeing

The North Australian Centre for Oil and Gas

The North Australian Centre for Oil and Gas (NACOG) delivers training and education programs together with research capabilities targeted at the specific needs of oil and gas operations and developments in the region.

Darwin sits adjacent to major offshore gas, oil and condensate reserves and is already a substantial gas processing, supply and service hub for projects off northern and north-western Australia. NACOG benefits the oil and gas industry through:

- Improved training and education outcomes
- Expansion of the locally based workforce
- solutions-oriented research and consultancy plus long term strategic research

www.cdu.edu.au/engit/oilandgas

The Centre for Renewable Energy

The Centre for Renewable Energy is a partnership between Charles Darwin University and the Northern Territory Government. The aim is to ensure local capability for the renewable energy sector, and provide leadership on renewable energy and low emissions deployment.

www.cdu.edu.au/engit/renewable_energy



Excellence in Research



The Innovative Research Universities of Australia are seven research-based, progressive institutions established in Australia in the past 50 years. Most IRU universities are ranked among the world's top 100 universities under 50 years old. The IRU members are

- Charles Darwin University
- Flinders University
- Griffith University
- James Cook University
- La Trobe University
- Murdoch University
- University of Newcastle

IRU universities teach and conduct research of national and international standing. They offer unlimited academic opportunity and globally respected qualifications earned in a welcoming and accessible study environment. The IRU universities promise academic rigour and respect for learning, a blended and flexible approach to study and access to a global alumni network.

www.iru.edu.au

Research Partnerships

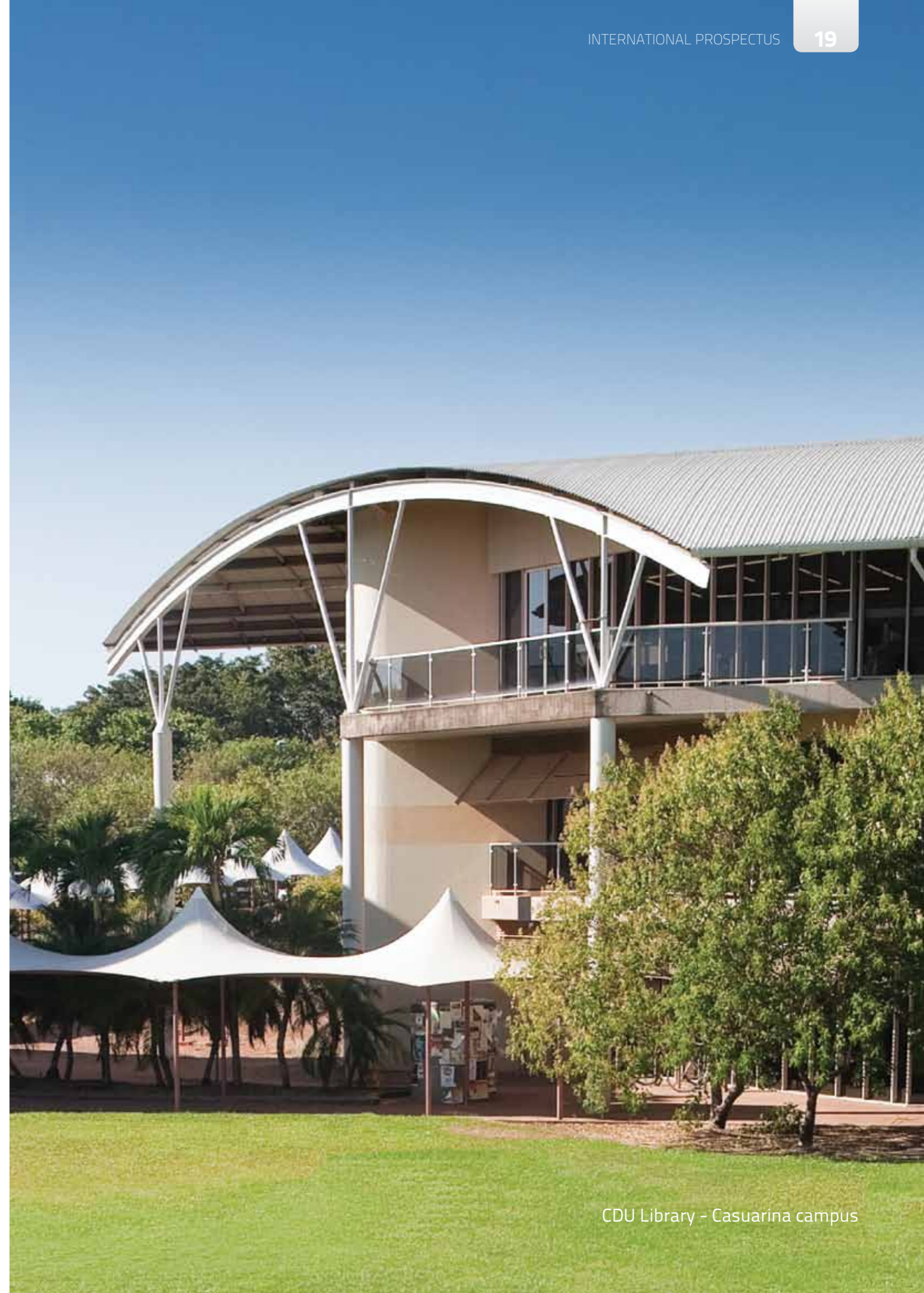
Researchers at CDU collaborate through partnerships and alliances with other universities and research agencies nationally and internationally.

Australian National University

Charles Darwin University and Australian National University (ANU) have a strategic alliance to foster research cooperation and give students and staff access to fieldwork and study opportunities at each university. CDU also has a joint PhD program with ANU. www.cdu.edu.au/vc/ANU_and_NTU.html

Flinders University

Charles Darwin University and Flinders University together established The Centre for Remote Health, which aims to contribute to the improved health outcomes of people in remote communities of the Northern Territory and Australia. www.crh.org.au



CDU Library - Casuarina campus

Academic Entry Requirements

Undergraduate

The minimum academic entry requirements for admissions to undergraduate degree is the completion of a qualification deemed equivalent to Australian Year 12 by the University's qualification assessment references. Applicants may also be required to satisfy specific course requirements such as a minimum overall grade score or prerequisite knowledge. The most common equivalencies accepted by Charles Darwin University are listed below, the complete list is available at www.cdu.edu.au/international

Bangladesh	Higher School Certificate (HSC) in First Division with a minimum grade of 60% in business maths subjects for entry into B Accounting; minimum grade of 65% in maths, physics or chemistry for specific courses (e.g. B Engineering)
Brunei	GCE "A" levels - GCE A Levels are deemed equivalent to Australian Year 12 if a student has passed at least two A Level subjects (not including the General Paper or local language). GCE AS Levels may be included where relevant.
Cambridge Pre U Diploma	CDU recognises the Cambridge Pre U diploma for direct admission to an undergraduate degree. The University will also accept a combination of Cambridge Pre U and GCE A levels subjects to satisfy direct entry requirements
China	Successful completion of a recognised pre-tertiary or foundation program or successful completion of one year study at a recognised tertiary or higher education institution or completion of the National College Entrance Examination (NCEE GAOKAO) at a specified level plus successful completion of 6 month English Language program at Charles Darwin University
Hong Kong	HKDSE with an average of 4 in Level 4 core subjects and average of 4 in two Level 4 electives
India	Successful completion of All India Senior School Certificate or Indian School Certificate or Senior Secondary Certificate or State Board Examinations with an average score of at least 60% in best 3 academic subjects excluding local language.
Indonesia	Entry to some courses with SMU minimum grade of 8; Successful completion of one year of a university degree or SO Diploma (DIII) from a recognised institution
International Baccalaureate	Completed IB diploma with minimum 24 points from 6 subjects at one sitting
Malaysia	Malaysian STPM; entry to some courses with Senior Middle 3 MICSS UEC minimum two A and two B grades; Canadian OAC pre university diploma
Nepal	Completion of the Higher Secondary Education Board (HSEB) in First Division: B. Accounting requires a minimum grade of 60% in business maths subjects. B. Engineering requires a minimum grade of 65% in maths, physics and chemistry. B. Nursing requires a minimum overall score of 65%. Completion of the Proficiency Certificate with a minimum grade average of 65%.

Undergraduate

Pakistan	Higher Secondary School Certificate Intermediate (Division 1) with an average of 60% in four academic subjects or successful completion of the first year of a degree at a recognised institution
Philippines	Successful completion of one year of a bachelor's degree at a recognised university
Singapore	GCE "A" levels - GCE A Levels are deemed equivalent to Australian Year 12 if a student has passed at least two A Level subjects (not including the General Paper or local language). GCE AS Levels may be included where relevant.
Sri Lanka	GCE "A" levels - GCE A Levels are deemed equivalent to Australian Year 12 if a student has passed at least two A Level subjects (not including the General Paper or local language). GCE AS Levels may be included where relevant.
Taiwan	Successful completion of one year of a bachelor's degree at a recognised university; or two years study at a recognised junior college
Thailand	Successful completion of Mathayom 6 with GPA 3.0 or better; or successful completion of one year of a bachelor's degree at a recognised university
UK	GCE "A" levels - GCE A Levels are deemed equivalent to Australian Year 12 if a student has passed at least two A Level subjects (not including the General Paper or local language). GCE AS Levels may be included where relevant.
USA	High School diploma with min B average grade/ GPA 3 and SAT score minimum 1200(prior to 2004) and 1700 since 2004
Vietnam	Completion of Bang Tu Tai with minimum average of 80% in 4 core academic subjects or successful completion of one year of a bachelor's degree at a recognised university

Postgraduate

Coursework programs	The minimum academic requirements for admission to a postgraduate or graduate entry degree is the completion of a bachelor's degree which is deemed equivalent to an Australian bachelor's degree by the University's qualification assessment references. Applicants may also be required to satisfy specific course requirements such as a minimum overall grade score, prerequisite knowledge or work experience.
Research programs	Applicants must have successfully completed the equivalent of an Australian honours degree or masters degree.

Vocational Education and Training (VET)

Certificate level programs	A qualification equivalent to Australian Year 10
Diploma and Advanced Diploma programs	A qualification equivalent to Australian Year 12

English Language Entry Requirements

Previous English Language Study

Students who have studied in one of the following countries may meet the English language entry requirements if they have achieved the grades and qualifications listed below, the complete list is available at www.cdu.edu.au/international

Botswana	Where English is the first language: an official letter from a previous institution advising that English was the medium of instruction used in previous studies.
Canada	A score of 60% in English in the final year of the Ontario Secondary School Diploma or Canadian Pre-University program, valid for two years from the date of the test to the date of commencement at CDU.
Hong Kong	A score of B or better in Level 4 English in the Hong Kong Diploma of Secondary Education (HKDSE), valid for 2 years, from the date of the test to the date of commencement at CDU.
Kenya	Where English is the first language: an official letter from a previous institution advising that English was the medium of instruction used in previous studies.
Malaysia	A score of C or better in the General Paper in the GCE 'O' level examination or a Cambridge University 'O' level moderated score of 3B in English in the Sijil Pelajaran Malaysia (SPM examination) valid for 2 years, from the date of the test to the date of commencement at CDU.
Singapore	A score of D or better in the General Paper in the Singapore Cambridge General Certificate of Education (Advanced Level) OR a grade of C or better in English Language in the Singapore-Cambridge General Certificate of Education (Ordinary Level). Both are valid for 2 years, from the date of the test to the date of commencement at CDU.
South Africa	Where English is the first language: an official letter from a previous institution advising that English was the medium of instruction used in previous studies.
Tanzania	Where English is the first language: an official letter from a previous institution advising that English was the medium of instruction used in previous studies.
United Kingdom	Where English is the first language: a score of C or better in English in the Cambridge General Certificate of Education 'O' level or AS level or Advanced level, valid for five years, from the date of the test to the date of commencement at CDU.
United States of America	Where English is the first language: a pass in English in the High School Diploma.
Zimbabwe	Where English is the first language: an official letter from a previous institution advising that English was the medium of instruction used in previous studies.
International Baccalaureate	A grade of 4 or better in English B, English A1 or English A2, valid for five years from the date of the test to the date of commencement at CDU.

English Language Tests & Courses

While IELTS remains the principle English language proficiency qualification, listed below are other qualifications which would satisfy the University's minimum English language proficiency requirements. All tests are valid for two years, from the date of the test to the date of commencement at CDU, unless otherwise specified.

Regardless of CDU's requirements and acceptance of certain equivalents, all applicants must still satisfy Department of Immigration and Citizenship (DIAC) English language proficiency (ELP) requirements for student visa applications (if applicable).

Test	Postgraduate	Undergraduate	VET
IELTS Academic Module	A minimum overall score of 6.5 with no band less than 6.0.	A minimum overall score of 6.0 with no band less than 6.0, except B.Nursing, B. Midwifery and B.Pharmacy which require a minimum overall score of 6.5 with no band less than 6.0.	A minimum overall score of 5.5 with no band less than 5.0, except Cert. III Hospitality (Commercial) and Cert. III Retail Baking which required a minimum overall score of 6.0 with no band less than 6.0.
Australian Technology and Management College (ATMC)	A grade of 'Competent' in 8 core units and 1 elective unit in Certificate IV in ESL (Further Study). Students will be required to sit an exit test on completion and achieve a score equivalent to IELTS overall 6.5 with no sub-band less than 6.0.	A grade of 'Competent' in 8 core units and 1 elective unit in Certificate IV in ESL (Further Study). Students will be required to sit an exit test on completion and achieve a score equivalent to IELTS 6.0 in all bands.	
Cambridge English Advanced (CAE)	A minimum overall score of 58 with a candidate profile descriptor showing no less than 'Borderline' in each skill.	A minimum overall score of 52 with a candidate profile descriptor showing no less than 'Borderline' in each skill.	
Cambridge English Proficiency (CPE)		A minimum overall score of 45 with a candidate profile descriptor showing no less than 'Weak' in each skill.	
Common European Framework Certificate of English Proficiency	A minimum overall grade of C1, valid for three years from the date of the test to the date of commencement at CDU.	A minimum overall grade of B2.	
Navitas English Academic English	A minimum overall pass of 65% in Academic English 3 with a 65% pass in the research essay, except Research courses which require a minimum overall pass of 65% in Academic English 3 and a 75% pass in the research essay.	A minimum overall pass of 55% in Academic English 3, except for B.Nursing, B.Midwifery and B.Pharmacy which require an overall pass of 65% in Academic English 3.	An overall pass of 60% in Academic English 2, except Cert. III Hospitality (Commercial Cookery) and Cert. III Retail Baking which require an overall pass of 55% in the Academic English Level 3 program.
Pearson Test of English (PTE) Academic module	A minimum overall score of 60 with no score lower than 50.	A minimum overall score of 50 with no score lower than 42, except for B.Nursing, B. Midwifery and B.Pharmacy which require a minimum score of 58 with no score lower than 50.	A minimum overall score of 46.
TOEFL Internet based Test (iBT)	A minimum overall score of 90 with a minimum writing score of 22.	A minimum overall score of 80 and a minimum writing score of 20, except for B.Nursing, B.Midwifery and B.Pharmacy which do not accept TOEFL.	A minimum overall score of 65 with a minimum writing score of 18.

The Application Process

1

APPLICATION

Applications must be submitted through the University's online application system. Follow the instructions in the application form to ensure you have attached all relevant supporting documents. Incomplete applications cannot be processed and will be returned to you to complete and resubmit.

Application Deadlines:

Semester 1 31 January
Semester 2 23 June

www.cdu.edu.au/international/future-students/howdoiapply/

2

ASSESSMENT

CDU's International Admissions team assess your application against:

- English language entry requirements
- Academic entry requirements
- DIAC's GTE and GS criteria

Meeting the minimum entry requirements for a course does not guarantee an offer to study at the University.

A complete application is normally assessed within 5 business days.

3

OFFER

If your application is successful you will be sent one of the following:

- Provisional Letter of Offer
- Conditional Letter of Offer
- Unconditional Letter of Offer

Each letter will have instructions on what you have to do next and on how to accept your offer (if applicable).

It is important that you do not use your letter of offer to apply for a student visa.

4

ACCEPTANCE

Accepting your offer generally includes the following steps:
Paying the deposit outlined in your Letter of Offer
Signing and returning the Terms of Agreement

CDU will then issue a Confirmation of Enrolment (CoE) which you can use to apply for your Australian student visa.

5

VISA

The Department of Immigration and Citizenship (DIAC) is responsible for issuing visas to students who wish to study in Australia. More information on the visa application process can be found at:

<http://www.immi.gov.au/e-visa/students.htm>

6

ARRIVAL

Students will be sent a Pre-Departure & Arrivals Guide by CDU which gives information on the things to consider when booking your travel and arriving in Australia.

Information about the compulsory International Student Orientation will be sent before the semester commences.

www.cdu.edu.au/orientation

Frequently Asked Questions



Who is an International student?

An International student is one who is not an Australian or New Zealand citizen, and is enrolled or proposes to enrol at an Australian institution. Temporary residents of Australia and permanent residents of New Zealand are classified as international students.



What type of visa do I need?

For all visa enquiries and applications please contact your local Australian Embassy, High Commission or Diplomatic Mission.

www.immi.gov.au

www.dfat.gov.au/missions



What is Streamlined Visa Processing (SVP)?

SVP provides a quicker visa processing time for students applying to study at eligible universities, such as CDU. Student visa applicants must satisfy both the Genuine Temporary Entrant (GTE) and Genuine Student (GS) criteria as determined by the Department of Immigration and Citizenship.

www.immi.gov.au/students/_pdf2011-genuine-temporary-entrant.pdf



Do I have to apply online?

Yes. All applications must be submitted through the University's online application system. You can complete your application online and upload all the required supporting documents. If you are using an agent they may submit the application online on your behalf.

<http://apply.cdu.studylink.com>



What documentation do I need to submit with my application?

You must submit the following documents with your online application:

- Copy of passport personal details page
- Proof of English language proficiency
- Certified copies of all transcripts of results, award certificates, grading systems and English translations
- Statement of Purpose
- Financial Declaration and/or Evidence of Finances
- A detailed resume or CV

In the first instance students should scan certified copies of these documents at the time of application. A Justice of the Peace, Notary Public or similar government official or an authorised CDU agent are all able to certify documents on behalf of CDU. Once your application is assessed CDU will advise if you need to submit a hard copy of the certified document.

If you are waiting for transcripts or results certification you can still submit an application with a note advising when results are likely to be available. Additional documents can be uploaded to your application when you receive them.



Will my CDU qualification be recognised in my home country?

All CDU qualifications are recognised for professional recognition in Australia, with transferability in most countries, however it is advised that students check the professional recognition requirements in their home country.



How is my application assessed?

CDU's International Admissions team assess whether applicants meet the University's admissions criteria for entry to a course, in accordance with DIAC's GTE and GS criteria. The Head of School or a delegate decide whether or not an applicant is to be admitted. Meeting the minimum entry requirements for a course does not guarantee an offer to study at the University.



How much does it cost to study in Australia?

Detailed information on the cost of living and studying in Australia can be found on page 12 & 13.



Can I work while I am studying in Australia?

A student visa allows you to work for up to 40 hours per fortnight during the semester, and full-time during University vacations. More information on student visa conditions can be found at the DIAC website:

www.immi.gov.au/students/students/working_while_studying/conditions.htm



Can I work in Australia when I graduate?

The Australian Government offers Post Study Work Rights (PSWR) to students granted a visa from November 2011. Further details are available at:

www.immi.gov.au/visas/students/485/



How do I get a refund?

CDU has a detailed policy covering all aspects of refund of fees for International students. The University's refund policy complies with the Education Services for Overseas Students (ESOS) legislative framework and the Tuition Protection Scheme (TPS) legislation. More information is available at:

Refund of Fees for International Students
www.cdu.edu.au/governance/international_students.html

Refund Policy
www.cdu.edu.au/governance/policies/pol-041.pdf

TPS Legislation www.tps.gov.au



Arts & Creative Arts



Bachelor of Arts

DURATION	ANNUAL FEE	START DATES
3 years	\$16,320 AUD	February & July
ENTRY REQUIREMENTS:		
<ul style="list-style-type: none"> A minimum overall IELTS score of 6.0 with no band less than 6.0, or equivalent. Successful completion of Australian Year 12 or equivalent. 		
ABOUT THE COURSE:		
<p>The Bachelor of Arts provides graduates with the ability to understand and study human society. It develops high levels of written and oral communication skills in the humanities and social sciences, including history, Greek, Chinese (Mandarin) and Indonesian studies, political science and sociology. The course includes a common first year, providing an excellent foundation for further study in a core specialist area of history or political science. A second specialist pathway of study is available in languages, creative arts and industries, communications, business administration, psychology, economics, marketing, Indigenous knowledge systems or creative writing. Combinations of these specialist areas of study provide graduates with distinctive qualifications that lead to interesting and rewarding careers. The course builds on the University's unique location in northern Australia, adjacent to southeast Asia.</p>		
CAREER OPPORTUNITIES:		
<p>Employment opportunities include federal, state and territory governments, land councils, museums, non-government agencies and the corporate sector, particularly where these organisations engage with central and northern Australia and Asia.</p>		
COURSE STRUCTURE:		
Core units include:		
Year 1	Year 2	
<ul style="list-style-type: none"> Foundations of Creative Writing Fundamentals of Australian History Fundamentals of Australian Political Science Sociological Perspectives Fundamentals of Economics Introductions to Multimedia 	<ul style="list-style-type: none"> Communication, Technology and Culture Influential Critical Thinkers The World of Work 	
Specialisations are shown below and include an example of the typical units studied:		
Political Science		
Year 2	Year 3	
<ul style="list-style-type: none"> Australian State Politics Political Ideas International Relations Comparative Politics of Southeast Asia 	<ul style="list-style-type: none"> Northern Territory Politics Small State Diplomacy Politics in Indonesia Politics in China 	
History		
Year 2	Year 3	
<ul style="list-style-type: none"> Problems in Australian History History of Southeast Asian Civilizations Colonial Rule in Southeast Asia Northern Australian Rule 	<ul style="list-style-type: none"> Mainland Southeast Asia 	

Creative Arts and Industries		
Year 1	Year 2	Year 3
<ul style="list-style-type: none"> Introduction to Multimedia Creative Practice 	<ul style="list-style-type: none"> Modernity New Media Studio 	<ul style="list-style-type: none"> Technical Production
Communications		
Year 1	Year 2	Year 3
<ul style="list-style-type: none"> Foundations of Communication Studies Issues in Communication 	<ul style="list-style-type: none"> Professional Writing Project Management Practising Public Relations 	<ul style="list-style-type: none"> Culture and Identity
Psychology		
Year 1	Year 2	Year 3
<ul style="list-style-type: none"> Introduction to Psychology 	<ul style="list-style-type: none"> Developmental Psychology Biological Bases for Behaviour Cognition and Language Research Design and Analysis 	<ul style="list-style-type: none"> Theories of Personality Learning and Motivation Abnormal Psychology
Economics		
Year 2	Year 3	
<ul style="list-style-type: none"> Intermediate Microeconomics Intermediate Macroeconomics Managerial Economics 	<ul style="list-style-type: none"> Advanced Economics Economics of Southeast Asia Economic Modelling 	
Marketing		
Year 2	Year 3	
<ul style="list-style-type: none"> Consumer Behaviour Marketing Communication Marketing Research 	<ul style="list-style-type: none"> International Marketing Services Marketing Marketing Planning 	
Creative Writing		
Year 2	Year 3	
<ul style="list-style-type: none"> Short Story Writing Personal Narratives Writing Poetry Writing for Stage Writing for Short Film 	<ul style="list-style-type: none"> Writing Project 	

Bachelor of Creative Arts and Industries (Communication)

DURATION	ANNUAL FEE	START DATES
3 years	\$16,640 AUD	February & July
ENTRY REQUIREMENTS:		
<ul style="list-style-type: none"> A minimum overall IELTS score of 6.0 with no band less than 6.0, or equivalent. Successful completion of Australian Year 12 or equivalent. 		
ABOUT THE COURSE:		
This course offers students the opportunity to tap their creative potential by building pathways that develop strengths in professional and creative writing, blogs and writing for the web, broadcast and multimedia production. Students are encouraged to broaden their studies through elective choices from the creative courses being offered at Charles Darwin University in New Media Design, Fine Arts and Music.		
CAREER OPPORTUNITIES:		
Graduates find employment in print and electronic media, public relations, marketing, government and community relations as well as a host of other niche areas in commercial enterprises that place a premium on managing relationships.		
COURSE STRUCTURE:		
Core units include:		
Year 1	Year 2	
<ul style="list-style-type: none"> Introduction to Multimedia Creative Practice 	<ul style="list-style-type: none"> Communication, Technology and Culture Modernity 	
Specialisations are shown below and include an example of the typical units studied:		
Public Relations and Marketing		
Year 1	Year 2	Year 3
<ul style="list-style-type: none"> Foundations of Communication Studies Issues in Communication Studies Fundamentals of Marketing Principles of Public Relations 	<ul style="list-style-type: none"> Professional Writing Marketing Communication Practising Public Relations 	<ul style="list-style-type: none"> Culture and Identity
Communication Design		
Year 1	Year 2	Year 3
<ul style="list-style-type: none"> Foundations of Communication Studies Issues in Communication Studies Introductory Studio 	<ul style="list-style-type: none"> Professional Writing New Media Intermediate Studio 	<ul style="list-style-type: none"> Culture and Identity

Bachelor of Creative Arts and Industries (Music)

DURATION	ANNUAL FEE	START DATES
3 years	\$16,640 AUD	February & July
ENTRY REQUIREMENTS:		
<ul style="list-style-type: none"> A minimum overall IELTS score of 6.0 with no band less than 6.0, or equivalent. Successful completion of Australian Year 12 or equivalent. Successful completion of an audition and interview. 		
ABOUT THE COURSE:		
The Bachelor of Creative Arts and Industries (Music) provides the intensive personalised training required for professional recognition within the music industry. The course offers two principal pathways of study: a classical music specialisation or a contemporary music specialisation. This flexible course allows students to choose suites of study that best accommodate their individual career pathway. A close partnership with the Darwin Symphony Orchestra, the Darwin Festival, the Garma Festival and the Centre for Youth and Community provides a challenging and exciting environment in which to learn music and gain experience in community-based musical events. CDU's innovative music tuition and collaboration lab provide opportunity to access tuition, shared performance and master classes offered elsewhere nationally and internationally.		
CAREER OPPORTUNITIES:		
Graduates work as professional musicians, as solo, chamber, orchestral or vocal performers.		
COURSE STRUCTURE:		
Core units include:		
Year 1	Year 2	
<ul style="list-style-type: none"> Introduction to Multimedia Creative Practice 	<ul style="list-style-type: none"> Communication, Technology and Culture Modernity 	
Specialisations are shown below and include an example of the typical units studied:		
Classical Music		
Year 1	Year 2	Year 3
<ul style="list-style-type: none"> Language of Music 	<ul style="list-style-type: none"> Instrumental and Vocal Studies 	<ul style="list-style-type: none"> History and the Performing Musician
Contemporary Music		
Year 1	Year 2	Year 3
<ul style="list-style-type: none"> Language of Music 	<ul style="list-style-type: none"> Instrumental and Vocal Studies Project Management 	<ul style="list-style-type: none"> Technical Production

Bachelor of Creative Arts and Industries (New Media Design)

DURATION	ANNUAL FEE	START DATES
3 years	\$16,640 AUD	February & July
ENTRY REQUIREMENTS:		
<ul style="list-style-type: none"> A minimum overall IELTS score of 6.0 with no band less than 6.0, or equivalent. Successful completion of Australian Year 12 or equivalent. 		
ABOUT THE COURSE:		
This course provides students with the knowledge and skills to become designers and developers within the creative industries by allowing them to specialise in web development and design, new media design, communication design or contemporary music. The course focuses on high-end technologies, software and theories to enable students to become multi-skilled professionals and creative graduates in areas such as animation, video production, communication, interactive design, graphic design, digital media, film, television, gaming, music, sound and web design.		
CAREER OPPORTUNITIES:		
Graduates can work in areas such as computer arts, communication, interactive design, gaming, graphic design, digital media, film, television, music, sound and web.		
COURSE STRUCTURE:		
Core units include:		
Year 1	Year 2	
<ul style="list-style-type: none"> Introduction to Multimedia Creative Practice 	<ul style="list-style-type: none"> Communication, Technology and Culture Modernity 	
Specialisations are shown below and include an example of the typical units studied:		
New Media Design		
Year 1	Year 2	Year 3
<ul style="list-style-type: none"> Introductory Studio 	<ul style="list-style-type: none"> New Media Studio Animation Studio Scripting and Interactive Studio 	<ul style="list-style-type: none"> Advanced Studio Advanced Project
Web Development and Design		
Year 1	Year 2	Year 3
<ul style="list-style-type: none"> Software Now Introductory Studio 	<ul style="list-style-type: none"> Database Concepts Mobile Web Structures New Media Studio 	<ul style="list-style-type: none"> Database-driven Web Applications
DUAL DEGREE PROGRAM:		
This course is available as part of a dual degree program. See the course list for more information.		

Bachelor of Creative Arts and Industries (Visual Arts)

DURATION	ANNUAL FEE	START DATES
3 years	\$16,640 AUD	February & July
ENTRY REQUIREMENTS:		
<ul style="list-style-type: none"> A minimum overall IELTS score of 6.0 with no band less than 6.0, or equivalent. Successful completion of Australian Year 12 or equivalent. Submission of a portfolio of creative works. 		
ABOUT THE COURSE:		
This course contains two pathways designed to assist students to develop the critical tools and material skills necessary to build professional careers in the Visual Arts as artists and theorists. The studio and theoretical teaching staff are augmented by a vibrant visiting forum of guest speakers and together with our partnership with Northern Editions and the CDU Art Gallery and Collection provide an exciting and stimulating learning environment.		
CAREER OPPORTUNITIES:		
The Studio Practice specialisation is a contextual studio based programme which provides students with the opportunity to specialise in digital media, painting, printmaking, sculpture and/or drawing or to combine any media in their studio productions. The Art History and Cultural Heritage specialisation gives students the marketing, writing and research skills required to work within museums, galleries, arts tourism industries and arts writing/publishing sectors.		
COURSE STRUCTURE:		
Core units include:		
Year 1	Year 2	
<ul style="list-style-type: none"> Introduction to Multimedia Creative Practice 	<ul style="list-style-type: none"> Communication, Technology and Culture Modernity 	
Specialisations are shown below and include an example of the typical units studied:		
Studio Practice		
Year 1	Year 2	Year 3
<ul style="list-style-type: none"> Introductory Studio 	<ul style="list-style-type: none"> Intermediate Studio 	<ul style="list-style-type: none"> Advanced Studio
Art Cultures		
Year 1	Year 2	Year 3
<ul style="list-style-type: none"> Visual Cultures 	<ul style="list-style-type: none"> Indigenous Art in Northern Australia Foundations of South East Asian Arts Post-modernism: Art, Architecture, Culture and Theory 	<ul style="list-style-type: none"> Contemporary Australian Indigenous Art Independent Studies Contemporary Art Post C 1980

Building Design & Architecture



Bachelor of Design

DURATION	ANNUAL FEE	START DATES
3 years	\$17,600 AUD	February & July
ENTRY REQUIREMENTS:		
<ul style="list-style-type: none"> A minimum overall IELTS score of 6.0 with no band less than 6.0, or equivalent. Successful completion of Australian Year 12 or equivalent. 		
ABOUT THE COURSE:		
<p>This course develops theoretical and practical skills in the design of the built environment as well as skills in computer aided design and the preparation of design and working drawings. Focus is placed on the special requirements for architecture, interior design and building construction in hot-humid tropical environments. The skills gained in this course will equip graduates to fulfil roles in the architecture and interior design industries. Other opportunities include further study leading to a degree in architecture and registration as an architect.</p>		
CAREER OPPORTUNITIES:		
<p>The skills gained in this course will equip graduates to fulfil roles in the building industry as building designers or building technicians.</p>		
COURSE STRUCTURE:		
Core units include:		
Year 1	Year 2	Year 3
<ul style="list-style-type: none"> Drawing Design Communication Creative Practice Design Studio Architectural Technology 	<ul style="list-style-type: none"> Postmodernism Art, Architecture, Culture and Theory Modernity 	<ul style="list-style-type: none"> Design in Context Architecture, Design, Culture and Space
Specialisations are shown below and include an example of the typical units studied:		
Architecture		
Year 3		
<ul style="list-style-type: none"> Tropical Architecture Design Studio 		
Interior Design		
Year 3		
<ul style="list-style-type: none"> Interior Design Studio 		

Business & Commerce



At CDU I earned an Accounting degree and learned first-hand that CDU was a great multicultural institution in which to study.

Sachiko Hirayama - Japan



Master of Accounting

(Professional Practice)

DURATION	ANNUAL FEE	START DATES
2 years	\$ 20,560 AUD	February & July

ENTRY REQUIREMENTS:

- A minimum overall IELTS score of 6.5 with no band less than 6.0, or equivalent.
- Successful completion of an Australian Bachelor degree or equivalent.

ABOUT THE COURSE:

Graduates of degree courses other than accounting may later wish to enhance their management skills or become professional accountants by undertaking this conversion course. The course focuses on contemporary knowledge and skills required for practise as a public or chartered accountant; effective management; accountability and control; and effective decision-making for financial success.

Studies in the Master of Accounting (Professional Practice) will provide the technical and conceptual skills required to become a competent accountant, and will develop students' abilities to analyse, criticise and synthesise various accounting and related principles, methods and techniques.

A special feature of this course is the 12 week internship to ensure that students have the opportunity to put theory into practice, are in touch with modern demands and practices and are better prepared for the workforce.

CAREER OPPORTUNITIES:

Graduates find employment as accountants or financial analysts, and may increase promotional opportunities in their existing occupations.

PROFESSIONAL RECOGNITION:

This conversion course enables graduates with non-accounting or partial accounting backgrounds to meet the academic requirements for membership of CPA Australia, the Institute of Chartered Accountants in Australia and the Association of Chartered Certified Accountants of the UK. Students will need to meet the English language entry requirements for registration.

Students should check professional recognition requirements in their home country.

COURSE STRUCTURE:

Core units include:

Accounting Principles

This unit introduces the basic concepts and principles of accounting with special emphasis given to the use and interpretation of financial accounting information. Upon completion of this unit students will be able to read and interpret financial statements and will have gained an appreciation of their limitations and uses.

Corporate Accounting

Students will gain an understanding of Accounting Standards and Australian Corporate legislation which effects the operations and financial reporting of corporate entities and the ability to analyse problems and apply the relevant Accounting Standards and Corporate Legislation to practical situations.

Accounting Theory

The purpose of this unit is to enable students to take a balanced approach in explaining and discussing the alternative theories and perspectives of accounting. This unit enables students to appreciate the principles and concepts that underlie these various perspectives and to present relevant information to address these needs.

Australian Taxation Law

This unit is designed to provide the student with working knowledge of central taxing provisions of Commonwealth Tax Law and the concepts underlying these provisions and also the ability to apply Tax Law to factual situations.

Cost and Management Accounting

On completion of this unit students should be able to explain the nature of managerial accounting and the role of the management accountant as well as understanding cost concepts; cost behaviour and cost accounting systems, determine product costs; understand overhead costs and explain how to allocate overheads to departments and to products; explain the difference between variable and absorption costing and prepare profit and loss statement; prepare and analyse budgets and cost variances, and understand their limitation.

Auditing Corporate Entities

On completion of this unit students should have an understanding of the nature and importance of the audit, outline nature and structure of the accounting profession in Australia, the importance of Joint Code of Ethics and professional requirements. Assess the likelihood of material error for accounting balances or class transactions and the use of audit testing and Auditing Standards for specific account balances.

Computer-Based Accounting Systems

Accounting packages, operating systems and hardware selection and evaluation; the relevance and role of computerised accounting systems, general ledger, budgeting and performance analysis, accounts receivable, invoicing/sales analysis, inventory control, accounts payable, personnel and payroll, and fixed assets systems.

Business Communications

This unit aims at augmenting the existing student knowledge base through improvement in communication skills and preparing students for Organisational Communication. Through this unit the students will be able to apply their understanding of business and effective communication to real-life work scenarios.

Economic Statistics

This unit focuses on both the statistical tools and techniques used for decision making and the economic environment in which businesses operate; and how to use the available informations to make better decisions. The unit is organised into two discrete components - the quantitative methods and microeconomics.

Aspects of Corporate Finance

On completion of this unit, students should be able to; identify and explain major financial decisions; understand key concepts of corporate finance; analyse and evaluate capital investment projects; understand the concept of risk and return. Basic principles of portfolio theory and its application to security markets; examine the importance of a firm's dividend policy, alternative structures and finance policies; understand the nature and use of derivative securities and how they are used as risk management tools.

Commercial and Corporate Law for Managers

This unit provides a background to the principles of company law and commercial operation in the legal context as they affect accountants. It introduces the basic legal concepts in respect of incorporation, company liability, shareholder protection, and contracts in the business context.

Organisational Behaviour

This unit exposes students to the psychosocial, cultural and political contexts of behaviour in an organisation by developing perspectives on the individual (personality, motivation), group dynamics (leadership, decision-making) and systemic factors (culture, change). Importantly, the unit is not prescriptive and concepts and models are examined from a critical perspective.

Master of Business Administration (Professional Practice)

DURATION	ANNUAL FEE	START DATES
2 years	\$20,560 AUD	February & July
ENTRY REQUIREMENTS:		
<ul style="list-style-type: none"> A minimum overall IELTS score of 6.5 with no band less than 6.0, or equivalent. Successful completion of an Australian Bachelor degree or equivalent. 		
ABOUT THE COURSE:		
<p>The course is designed to develop the key attributes and skills required by senior and middle managers in a range of areas: commerce and industry, public sector and professional accounting. The graduate can choose to study a particular area or areas of business, combined with a period of approved professional practice experience and/or research, providing the graduate the opportunity to test their theoretical understanding against the reality of the workplace.</p> <p>A special feature of this course is the 12 week internship to ensure that students have the opportunity to put theory into practice, are in touch with modern demands and practices and are better prepared for the workforce.</p>		
CAREER OPPORTUNITIES:		
<p>Graduates of this course will be able to seek employment as middle and senior managers in public and private sectors with the knowledge to contribute effectively to organisational resource decisions, ethics, leadership, strategic planning and problem solving.</p>		
COURSE STRUCTURE:		
Core units include:		
Year 1		
<ul style="list-style-type: none"> Accounting for Managers Decision Making Organisational Behaviour Organisational Strategy and Leadership 		
Specialisations are shown below and include an example of the typical units studied:		
Commercial Management		
<ul style="list-style-type: none"> Commercial Management Economics for Managers Commercial and Corporate Law for Managers Managing Innovation International Business Cross Cultural Management Human Resource Management Clients and Markets Project Management Tools and Techniques Risk and Reliability Management 		
Enterprise Development		
<ul style="list-style-type: none"> Managing Innovation Clients and Markets Project Management Tools and Techniques Entrepreneurship for Professionals Risk and Reliability Management 		

Information Systems
<ul style="list-style-type: none"> Project Management Tools and Techniques Entrepreneurship for Professionals
Professional Accounting
<ul style="list-style-type: none"> Accounting Principles Corporate Accounting Auditing Corporate Entities Accounting Theory Computer-Based Accounting Systems Aspects of Corporate Finance Australian Tax Law Commercial and Corporate Law for Managers
International Business
<ul style="list-style-type: none"> Business Communications International Business International Marketing Cross Cultural Management Project Management Tools and Techniques

Bachelor of Commerce

DURATION	ANNUAL FEE	START DATES
3 years	\$16,880 AUD	February & July
ENTRY REQUIREMENTS:		
<ul style="list-style-type: none"> A minimum overall IELTS score of 6.0 with no band less than 6.0, or equivalent. Successful completion of Australian Year 12 or equivalent. 		
ABOUT THE COURSE:		
<p>This vocationally orientated and student centred course provides students with the career and professional skills needed in a rapidly changing business environment. It allows for flexibility of study and prepares students for careers in a variety of business fields. In addition, communication, presentation and problem-solving skills are emphasised.</p> <p>This course meets the needs of various professional bodies and the community. Students have a wide choice of units based upon their personal and career interests.</p>		
CAREER OPPORTUNITIES:		
<p>Graduates from this course may find employment in a variety of areas according to their specialisation not limited to the following: public and private sector corporations, banking and financial institutions, manufacturing and service industries, consultancy companies and government departments such as accounting, taxation, auditing, financial planning, production management, sales and retail, in roles of marketing officers, organisational managers, HR advisors, PR advisors, information managers and more.</p>		
COURSE STRUCTURE:		
Core units include:		
Year 1	Year 2	Year 3
<ul style="list-style-type: none"> Fundamentals of Marketing Fundamentals of Management Fundamentals of Accounting for Business Fundamentals of Economics Problem Solving Fundamentals of Law for Business 	<ul style="list-style-type: none"> The World of Work E-Commerce in the Global Business Environment 	<ul style="list-style-type: none"> The Global Future Applied Business Project
Specialisations are shown below and include an example of the typical units studied:		
Accounting (Core units will differ from those shown above)		
Year 2	Year 3	
<ul style="list-style-type: none"> Principles of Financial Accounting Management Accounting Business Finance 	<ul style="list-style-type: none"> Accounting Theory and Contemporary Issues Management Control Issues Computer-Based Accounting Systems 	
Economics		
Year 2	Year 3	
<ul style="list-style-type: none"> Intermediate Microeconomics Intermediate Macroeconomics Managerial Economics 	<ul style="list-style-type: none"> Advanced Economics Economics of Southeast Asia Economic Modelling 	

Management				
<table border="1"> <thead> <tr> <th>Year 2 (Choose any 3 units)</th> <th>Year 3 (Choose any 3 units)</th> </tr> </thead> <tbody> <tr> <td> <ul style="list-style-type: none"> Decision Making Organisations Behaviour Human Resource Management Project Management </td> <td> <ul style="list-style-type: none"> Planning and Strategy Operations Management Managing Change Industrial Relations </td> </tr> </tbody> </table>	Year 2 (Choose any 3 units)	Year 3 (Choose any 3 units)	<ul style="list-style-type: none"> Decision Making Organisations Behaviour Human Resource Management Project Management 	<ul style="list-style-type: none"> Planning and Strategy Operations Management Managing Change Industrial Relations
Year 2 (Choose any 3 units)	Year 3 (Choose any 3 units)			
<ul style="list-style-type: none"> Decision Making Organisations Behaviour Human Resource Management Project Management 	<ul style="list-style-type: none"> Planning and Strategy Operations Management Managing Change Industrial Relations 			
Marketing				
<table border="1"> <thead> <tr> <th>Year 2 (Choose any 3 units)</th> <th>Year 3</th> </tr> </thead> <tbody> <tr> <td> <ul style="list-style-type: none"> Consumer Behaviour Marketing Communications Marketing Research Project Management </td> <td> <ul style="list-style-type: none"> International Marketing Services Marketing Marketing Planning </td> </tr> </tbody> </table>	Year 2 (Choose any 3 units)	Year 3	<ul style="list-style-type: none"> Consumer Behaviour Marketing Communications Marketing Research Project Management 	<ul style="list-style-type: none"> International Marketing Services Marketing Marketing Planning
Year 2 (Choose any 3 units)	Year 3			
<ul style="list-style-type: none"> Consumer Behaviour Marketing Communications Marketing Research Project Management 	<ul style="list-style-type: none"> International Marketing Services Marketing Marketing Planning 			
Hospitality				
<table border="1"> <thead> <tr> <th>Year 2</th> <th>Year 3</th> </tr> </thead> <tbody> <tr> <td> <ul style="list-style-type: none"> Organisational Behaviour Project Management Working with Different Cultures </td> <td> <ul style="list-style-type: none"> Services Marketing Operations Management Hospitality Placement </td> </tr> </tbody> </table>	Year 2	Year 3	<ul style="list-style-type: none"> Organisational Behaviour Project Management Working with Different Cultures 	<ul style="list-style-type: none"> Services Marketing Operations Management Hospitality Placement
Year 2	Year 3			
<ul style="list-style-type: none"> Organisational Behaviour Project Management Working with Different Cultures 	<ul style="list-style-type: none"> Services Marketing Operations Management Hospitality Placement 			
Business Administration				
<table border="1"> <thead> <tr> <th>Year 2</th> <th>Year 3</th> </tr> </thead> <tbody> <tr> <td> <ul style="list-style-type: none"> Any special elective combination of 3 x 200 Level units </td> <td> <ul style="list-style-type: none"> Any special elective combination of 3 x 300 Level units </td> </tr> </tbody> </table>	Year 2	Year 3	<ul style="list-style-type: none"> Any special elective combination of 3 x 200 Level units 	<ul style="list-style-type: none"> Any special elective combination of 3 x 300 Level units
Year 2	Year 3			
<ul style="list-style-type: none"> Any special elective combination of 3 x 200 Level units 	<ul style="list-style-type: none"> Any special elective combination of 3 x 300 Level units 			
DUAL DEGREE PROGRAM:				
This course is available as part of a dual degree program. See the course list for more information.				

Bachelor of Accounting

DURATION	ANNUAL FEE	START DATES
3 years	\$16,880 AUD	February & July
ENTRY REQUIREMENTS:		
<ul style="list-style-type: none"> A minimum overall IELTS score of 6.0 with no band less than 6.0, or equivalent. Successful completion of Australian Year 12 or equivalent. 		
ABOUT THE COURSE:		
<p>This accounting course provides students with a sound knowledge base in financial accounting, management accounting, taxation, business law and finance.</p> <p>This vocationally oriented and student-centred course provides students with employment and professional skills needed in a rapidly changing business environment. It allows for flexibility of study and prepares students for careers in a variety of business fields. In addition, communication, presentation, and problem-solving skills are emphasised.</p> <p>Students have a wide choice of business units from which to choose and electives that will complement their personal interests and career options. Alternatively, students may select electives from other disciplines including language studies, anthropology, history, social science, Indigenous studies, applied science and engineering.</p>		
CAREER OPPORTUNITIES:		
<p>Graduates can expect to find employment in a range of areas in public and private sector corporations, banking and financial institutions, consultancy companies and government departments, in financial management, auditing and control, corporate reporting, accounting, taxation, financial planning etc.</p>		
PROFESSIONAL RECOGNITION:		
<p>A graduate of the degree program may apply for membership of CPA Australia, the Institute of Chartered Accountants in Australia (ICAA) and the Association of Chartered Certified Accountants of the UK (ACCA). Students will need to meet the English language entry requirements for registration.</p> <p>Students should check professional recognition requirements in their home country.</p>		
COURSE STRUCTURE:		
Core units include:		
Year 1	Year 2	Year 3
<ul style="list-style-type: none"> Introduction to Accounting Business Communications Introduction to Business Law Introduction to Management Quantitative Analysis for Business Principles of Economics 	<ul style="list-style-type: none"> Principles of Financial Accounting Management Accounting Financial Accounting Applications Business Finance Commercial and Corporate Law for Accountants 	<ul style="list-style-type: none"> Accounting Theory and Contemporary Issues Management Control Issues Auditing Principles Computer-Based Accounting Systems Corporate Accounting Professional Practice Project Taxation
DUAL DEGREE PROGRAM:		
<p>This course is available as part of a dual degree program. See the course list for more information.</p>		

Diploma of Business

DURATION	TUITION FEE	START DATES
.5 year	\$6160 AUD	February & July
ENTRY REQUIREMENTS:		
<ul style="list-style-type: none"> A minimum overall IELTS score of 5.5 with no band less than 5.0, or equivalent. Successful completion of Certificate IV in Business. 		
ABOUT THE COURSE:		
<p>This qualification reflects the role of individuals with substantial experience in a range of settings who are seeking to further develop their skills across a wide range of business functions. This qualification is also suited to the needs of individuals with little or no vocational experience, but who possess sound theoretical business skills and knowledge that they would like to develop in order to create further educational and employment opportunities.</p>		
CAREER OPPORTUNITIES:		
<p>Possible job titles relevant to this qualification include: executive officer; program consultant and program coordinator.</p>		
COURSE STRUCTURE:		
Units include:		
<ul style="list-style-type: none"> Manage Meetings Plan or review administration systems Manage business document design and development Make a presentation Manage projects Manage personal work priorities and professional development Ensure team effectiveness Write persuasive copy 		

Certificate IV in Accounting

DURATION	TUITION FEE	START DATES
.5 year	\$6160 AUD	July
ENTRY REQUIREMENTS:		
<ul style="list-style-type: none"> A minimum overall IELTS score of 5.5 with no band less than 5.0, or equivalent. Successful completion of Certificate III in Accounts Administration 		
ABOUT THE COURSE:		
<p>This qualification is designed to reflect the job roles of contract bookkeepers and employees performing bookkeeping tasks for organisations in a range of industries.</p> <p>A Business Activity Statement (BAS) service is a tax agent service that includes, but is not limited to, the following:</p> <ul style="list-style-type: none"> preparing or lodging an approved form about a taxpayer's liabilities, obligations or entitlements under a BAS provision; giving a taxpayer advice about a BAS provision that the taxpayer can reasonably be expected to rely upon to satisfy their taxation obligations; or dealing with the Commissioner on behalf of a taxpayer in relation to a BAS provision <p>Persons providing a BAS service must be registered by the Tax Practitioner's Board and this qualification is currently cited as meeting the educational requirements for registration. Other conditions apply including a designated period of experience. Persons seeking BAS agent registration should check current registration requirements with the Board as this is regularly reviewed.</p>		
CAREER OPPORTUNITIES:		
<p>Graduates from this course may find employment in Finance/ Accounting areas, undertaking tasks such as budgeting, inventory control, asset management and management reporting.</p>		
COURSE STRUCTURE:		
Units include:		
<ul style="list-style-type: none"> Prepare financial reports Design and produce business documents Participate in OHS processes Process financial transactions and extract interim reports Make decisions in a legal context Prepare financial statements for non-reporting entities Setup and operate a computerised accounting system Carry out business activity and instalment activity statement tasks Apply principles of professional practice to work in the Financial Services industry Develop and use complex spreadsheets Process business tax requirements Prepare operational budgets Establish and maintain payroll system 		

Certificate IV in Business

DURATION	TUITION FEE	START DATES
.5 year	\$6160 AUD	February & July
ENTRY REQUIREMENTS:		
<ul style="list-style-type: none"> A minimum overall IELTS score of 5.5 with no band less than 5.0, or equivalent. Successful completion of Certificate III in Business. 		
ABOUT THE COURSE:		
<p>This qualification reflects the role of individuals who use well-developed skills and a broad knowledge base in a wide variety of contexts. They apply solutions to a defined range of unpredictable problems, and analyse and evaluate information from a variety of sources. They may provide leadership and guidance to others with some limited responsibility for the output of others.</p>		
CAREER OPPORTUNITIES:		
<p>Possible job titles relevant to this qualification include: administrator and project officer.</p>		
COURSE STRUCTURE:		
Units include:		
<ul style="list-style-type: none"> Monitor a safe workplace Organise meetings Administer projects Make a presentation Work effectively with diversity Promote innovation in a team environment Design and develop complex text documents Develop teams and individuals Manage stress in the workplace Write complex documents 		

Certificate III in Accounts Administration

DURATION	TUITION FEE	START DATES
.5 year	\$6160 AUD	February

ENTRY REQUIREMENTS:

- A minimum overall IELTS score of 5.5 with no band less than 5.0, or equivalent.
- Successful completion Australian Year 11 or equivalent.

ABOUT THE COURSE:

This course is appropriate for a person working as an Accounts Clerk. Entry-level study for employees in industry, business and government working in accounting who perform routine duties. This qualification is the foundation for further VET studies in accounting.

CAREER OPPORTUNITIES:

The Certificate III in Accounts Administration is your gateway to the financial services industry, leading to entry-level careers such as accounts payable clerk, accounts receivable clerk and payroll clerk. This course is especially designed for those who need to perform routine accounting duties such as accounts payable/receivable, payroll, bookkeeping, purchases and sales, and preparation of financial reports.

COURSE STRUCTURE:

Units include:

- Design and produce business documents
- Participate in OHS processes
- Write simple documents
- Process financial transactions and extract interim reports
- Administer subsidiary accounts and ledgers
- Perform financial calculations
- Work effectively in the financial services industry
- Process payroll
- Prepare financial reports
- Produce spreadsheets
- Setup and operate a computerised accounting system

Certificate III in Business

DURATION	TUITION FEE	START DATES
.5 year	\$6160 AUD	February & July

ENTRY REQUIREMENTS:

- A minimum overall IELTS score of 5.5 with no band less than 5.0, or equivalent.
- Successful completion of Australian Year 11 or equivalent.

ABOUT THE COURSE:

This qualification reflects the role of individuals who apply a broad range of competencies in a varied work context using some discretion, judgment and relevant theoretical knowledge. They may provide technical advice and support to a team.

CAREER OPPORTUNITIES:

Possible job titles relevant to this qualification include: customer service adviser, data entry operator, general clerk, payroll officer, typist, word processing operator.

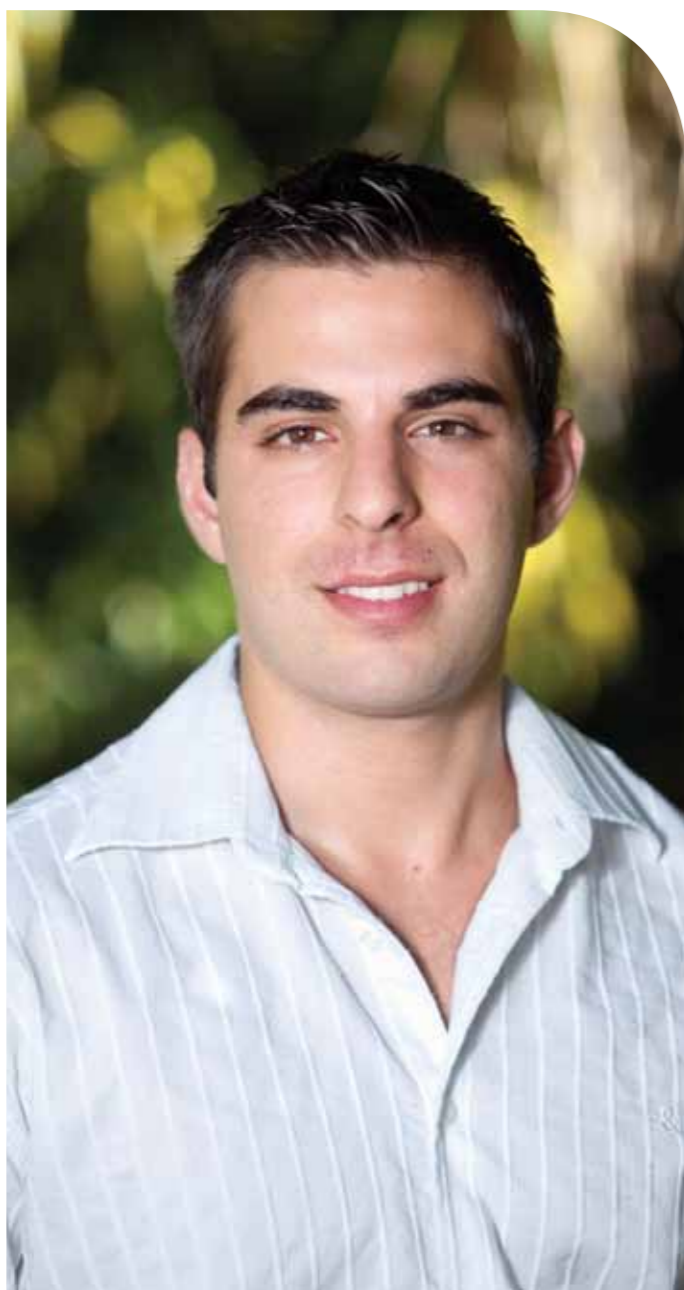
COURSE STRUCTURE:

Units include:

- Apply knowledge of OHS legislation in the workplace
- Deliver and monitor a service to customers
- Work effectively with diversity
- Promote innovation in a team environment
- Create electronic presentations
- Produce spreadsheets
- Design and produce business documents
- Develop keyboarding speed and accuracy
- Implement and monitor environmentally sustainable work practices
- Manage personal stress in the workplace
- Organise personal work priorities and development
- Write simple documents



Education



For me, studying at Charles Darwin University means hands on experience throughout my degree in a truly multicultural environment.

Tamas Fabo - Hungary



Master of Education

DURATION	ANNUAL FEE	START DATES
1 year	\$18,240 AUD	February & July

ENTRY REQUIREMENTS:

- A minimum overall IELTS score of 6.5 with no band less than 6.0, or equivalent.
- Successful completion of a recognised four year Bachelor of Education degree or equivalent; or a three year degree and a postgraduate Diploma of Education or equivalent.

ABOUT THE COURSE:

This course is suitable for professional educators and practising teachers who are engaged in change management, policy formation, the delivery of professional development and training programs, tertiary education, informal and non-formal education in community-orientated programs, working with volunteers and youth groups.

Applicants should note that the Master of Education is not a teaching qualification and is not suitable for those seeking a qualification to teach in the Northern Territory.

CAREER OPPORTUNITIES:

Graduates may seek employment as project directors, curriculum specialists or educational consultants.

COURSE STRUCTURE:

Core units include:

Professional Learning 1

The central focus of this generic unit is on key practitioner roles in educational leadership, policy making and/or research. The unit provides educators with the opportunity to reflect on their practice as educational leaders, policy makers, and/or practitioners by engaging in context specific problem-based research projects. Students select an issue or problem of personal professional interest and relevance in one of four main areas- professional knowledge, professional practice, professional leadership and professional engagement and innovation. Students will examine relevant contemporary perspectives framing the issues and seek innovative solutions to problems. The topics/issues for exploration may be of individual interest or customised for an industry-based group of professionals (e.g. school personnel, early childhood practitioners, a discipline-based or professional group, or a school system etc).

Professional Learning 2

The major focus of this unit is the promotion of Professional Learning within the educational sector /industry through the formation of a learning community (where relevant). Building on the issues explored in Professional Learning 1, students pursue an issue/problem in a self-selected area of professional interest. Typically, students will complete either an extensive literature review on a topic or engage in industry-based professional learning activities situated within a relevant educational framework and drawing on evidence-based perspectives. The focus of the unit is on improving professional practice in a specific educational context including consideration of options for harnessing ICT's to improve educational outcomes for learners.

Introduction to Research Methods

This unit has been developed to introduce students to research methodology in education and health. It provides an overview of the quantitative and qualitative paradigms and how these are most commonly applied in education and health research.

Professional Learning 5

The main focus of this unit is on building of social capital and capacity in educational contexts through transformative or other contemporary leadership approaches. The unit introduces and develops knowledge and attitudes concerning the ways in which communities build capacity and demonstrate resiliency and sustainability. The educator's role in providing transformative leadership is considered in detail. Participants are encouraged to identify a particular community project on which they can work in conjunction with key stakeholders. The community may be a community of place or affiliation, which may embrace on-line learning communities.

Specialisations are shown below and include an example of the typical units studied:

Professional Learning

Year 1

- Professional Learning 3
- Master of Education Project
- Professional Learning 4

Research

Year 1

- Professional Learning 6
- Master of Education Project

Applied Linguistics

Year 1

- Linguistics for Education
- Approaches to TESOL
- TESOL in Practice
- Language, Culture and Society

Graduate Diploma of Teaching and Learning

DURATION	ANNUAL FEE	START DATES
1 year	\$18,560 AUD	February

ENTRY REQUIREMENTS:

- A minimum overall IELTS score of 6.5 with no band less than 6.0, or equivalent.
- Successful completion of a recognised bachelors degree, or equivalent. For those intending to teach in middle or secondary schools, a major sequence in a recognised teaching area is required and a minor sequence or demonstrated competence in a second teaching area is normally required. A major sequence is defined as one-quarter of a degree and a minor sequence as one-sixth of a degree. Applicants with only one main area of study can be considered for entry, but those applicants need to be aware that having just one teaching area might preclude or limit employment opportunities in some jurisdictions and with some employers.

ABOUT THE COURSE:

The curriculum content and pedagogy of this course is contextualised to prepare students to teach middle or secondary schools, or in the early or primary years of primary schools. The course enables students to develop the skills and knowledge to teach in contemporary school settings. It is a fast-paced, intensive course with considerable opportunity for practical, classroom experience. Students are encouraged to recognise environmental, social and cultural influences on teaching and learning to achieve just, meaningful, purposeful and equitable outcomes for all learners. The early or primary years of primary schools streams comprise a combination of core course work and its attendant 80-day practicum enabling students to teach in the core curriculum areas. The middle and senior secondary streams provide a pedagogical focus to complement entry level discipline expertise. *See Note

CAREER OPPORTUNITIES:

The course prepares graduates to teach in early or primary years in a primary school setting, middle or secondary schools.

PROFESSIONAL RECOGNITION:

Students who complete the Graduate Diploma of Teaching and Learning are eligible for teacher registration in the Northern Territory. Before applying for admission students intending to seek employment outside the Northern Territory following course completion, should have the relevant State teacher registration authority and relevant employment authority (eg. State or Territory Department of Education, or Catholic Education Office) confirm their eligibility and suitability for registration and employment. Students will need to meet the English language entry requirements for registration.

COURSE STRUCTURE:

The course is one year of full-time intensive study over the calendar year. The GDTL is practical in nature and all students have regular contact with an assigned school. There are two periods of in-school professional experience that require full-time commitment:

- A series of visits in Semester 1 as well as two weeks continuous professional experience in a school.
- Ten weeks continuous professional experience in a school in Semester 2.

Core units include:

Year 1
<ul style="list-style-type: none"> Productive Learning in Diverse Classrooms Teaching the Curriculum 1/Integrating Literacy Teaching the Curriculum 2/Integrating Numeracy Teaching and Learning 1/Essential Learnings Teaching and Learning 2/Child and Adolescent Development Teaching and Learning 3/Assessment and Reporting Teaching and learning 6/Theory to Practice

Bachelor of Education

(Primary Teaching)

DURATION	ANNUAL FEE	START DATES
4 years	\$16,480 AUD	February & July

ENTRY REQUIREMENTS:

- A minimum overall IELTS score of 6.0 with no band less than 6.0, or equivalent.
- Successful completion of Australian Year 12 or equivalent.

ABOUT THE COURSE:

This course prepares students to be teachers in primary schools (Transition to Year 7). It meets both national and local need for teachers of exemplary practice committed to enhancing educational outcomes for all children and young adults. It emphasises improving the teaching-learning relationship in the classroom, raising awareness of issues surrounding Indigenous education and developing an informed, evidence-based approach to learning and teaching in primary settings.

The course is both theoretical and practical, providing a sound knowledge base in the core content areas of the school curriculum, knowledge of contemporary approaches to issues in education such as inclusivity, child and adolescent development and promoting positive behaviour, and extensive experience in school settings. * See Note

CAREER OPPORTUNITIES:

The course prepares graduates to teach in early or primary years in a Primary School.

PROFESSIONAL RECOGNITION:

This course is accredited by the Northern Territory Teachers Registration Board (NTTRB) and the Australian Institute of Teaching and School Leadership (AITSL). This accreditation provides national recognition for the purposes of teacher registration in Australia. Students will need to meet the English language entry requirements for registration.

COURSE STRUCTURE:

Core units include:

Year 1	Year 2	Year 3
<ul style="list-style-type: none"> Arts for Schools Health and Physical Education for Schools History for Schools Geography for Schools English Language and Literacy in Education 1 Content Knowledge for Teaching Teacher as Learner Chemical and Biological Sciences Physical and Earth/Space Sciences 	<ul style="list-style-type: none"> Technology and Design for Schools English Language and Literacy in Education Teaching English as an Additional Language Curriculum and Pedagogy in Primary Mathematics Teaching in Context Approaches to Education Child and Adolescent Development Promoting Positive Behaviours Teaching Indigenous Learners 	<ul style="list-style-type: none"> Arts, Health and PE Pedagogy Geography and History Pedagogy English, Language and Literacy in Education Mathematising and Contextualising The Professional Teacher STEM Pedagogy Assessment Reporting and Moderating Inclusive Education Researching Classroom Practice

Bachelor of Education Secondary Teaching (Visual Arts)

DURATION	ANNUAL FEE	START DATES
4 years	\$16,480 AUD	February & July

ENTRY REQUIREMENTS:

- A minimum overall IELTS score of 6.0 with no band less than 6.0, or equivalent.
- Successful completion of Australian Year 12 or equivalent.

ABOUT THE COURSE:

This degree provides students with knowledge and skills in Visual Arts and Education that will enable graduates to apply for registration as a teacher of Visual Arts and a second teaching area. Students can select a second teaching area from a wide range of specialist electives to suit their interests.

The education studies component is practice focused with students undertaking professional experience in schools and other learning sites generally from the third year of their course. Students are also encouraged to undertake field/professional experience in remote schools. External students can normally complete their professional experience in their home towns. * See Note

CAREER OPPORTUNITIES:

The course prepares graduates to teach Visual Arts in Secondary School.

PROFESSIONAL RECOGNITION:

This course is accredited by the Northern Territory Teachers Registration Board (NTTRB) and the Australian Institute of Teaching and School Leadership (AITSL). This accreditation provides national recognition for the purposes of teacher registration in Australia. However prospective students are advised to check with their state or territory employing authorities regarding the appropriate teaching disciplines required by them for the purposes of employment in secondary schools. Students will need to meet the English language entry requirements for registration.

COURSE STRUCTURE:

Core units include:

Year 1	Year 2	Year 3
<ul style="list-style-type: none"> Teacher as Learner Introductory Studio 	<ul style="list-style-type: none"> Visual Arts 1 Visual Arts 2 Teaching in Context Approaches in Education Child and Adolescent Development Promoting Positive Behaviours Teaching Indigenous Learners Exploring Middle Schooling Intermediate Studio Creative Arts 	<ul style="list-style-type: none"> The Professional Teacher Assessment Reporting and Moderating Inclusive Education Researching Classroom Practice Middle Schooling Pedagogies Advanced Studio

Students must also choose a second teaching area from those on offer.

Bachelor of Education Secondary Teaching (Health and Physical Education)

DURATION	ANNUAL FEE	START DATES
4 years	\$16,480 AUD	February & July

ENTRY REQUIREMENTS:

- A minimum overall IELTS score of 6.0 with no band less than 6.0, or equivalent.
- Successful completion of Australian Year 12 or equivalent.

ABOUT THE COURSE:

This course provides graduates with a qualification to teach Personal Development Health and Physical Education in schools and other educational settings. The education component is practice focused with students undertaking professional experience in schools and other learning sites. Students are also encouraged to undertake field/professional experience in remote schools. * See Note

CAREER OPPORTUNITIES:

The course prepares graduates to teach Health and Physical Education in Secondary School.

PROFESSIONAL RECOGNITION:

Although CDU are currently seeking national accreditation through the Australian Institute of Teaching and School Leadership (AITSL) accreditation process, prospective students are advised to check with the teacher registration authority in their state or territory regarding the suitability of the course for the purpose of teaching registration in that jurisdiction. Students will need to meet the English language entry requirements for registration.

COURSE STRUCTURE:

Core units include:

Year 1	Year 2
<ul style="list-style-type: none"> Anatomy and Physiology 1 Introduction to Psychology A Teacher as Learner Anatomy and Physiology 2 Teaching Indigenous Learners Promoting Positive Behaviours 	<ul style="list-style-type: none"> Biomechanics 1 Introduction to Sport Psychology 1 Motor Control and Development Teaching in Context Design and Analysis Exercise Physiology 1 Functional Anatomy Teaching the Curriculum: Health and Physical Education 1
Year 3	Year 4
<ul style="list-style-type: none"> Exercise Physiology 2 Alcohol and Other Drugs Studies Child and Adolescent Development Science 1 Exercise and Health Science 2 Assessment Reporting and Moderating Approaches to Education 	<ul style="list-style-type: none"> Nutrition and Health Health and Physical Education Inclusive Education Exercise and Sport Science Practicum Researching Classroom Practice The Professional Teacher

NOTE: Students must have cleared a Police Check and/or Working with ChildrenCheck before they can undertake practice teaching. Students whose Police Check and/or Working with Children Check are not cleared by the education sectors will not be able to undertake practice teaching and will not therefore be able to complete the requirements of the course.

Bachelor of Education Secondary Teaching (Science)

DURATION	ANNUAL FEE	START DATES
4 years	\$16,480 AUD	February & July
ENTRY REQUIREMENTS:		
<ul style="list-style-type: none"> A minimum overall IELTS score of 6.0 with no band less than 6.0, or equivalent. Successful completion of Australian Year 12 or equivalent. 		
ABOUT THE COURSE:		
<p>This course enables graduates to teach across two curriculum areas. Students can select a second teaching area from listed specialist electives according to their interest and employment needs.</p> <p>The education component is practice focused with students undertaking professional experience in schools and other learning sites. Students are also encouraged to undertake field/professional experience in remote schools. *See Note</p>		
CAREER OPPORTUNITIES:		
The course prepares graduates to teach Science in Secondary School.		
PROFESSIONAL RECOGNITION:		
<p>This course is accredited by the Northern Territory Teachers Registration Board (NTTRB) and the Australian Institute of Teaching and School Leadership (AITSL). This accreditation provides national recognition for the purposes of teacher registration in Australia. However prospective students are advised to check with their state or territory employing authorities regarding the appropriate teaching disciplines required by them for the purposes of employment in secondary schools. Students will need to meet the English language entry requirements for registration.</p>		
COURSE STRUCTURE:		
Core units include:		
Year 1	Year 2	Year 3
<ul style="list-style-type: none"> Teacher as Learner 	<ul style="list-style-type: none"> Science 1 Science 2 Teaching in Context Approaches to Education Child and Adolescent Development Promoting Positive Behaviours Teaching Indigenous Learners Exploring Middle Schooling 	<ul style="list-style-type: none"> The Professional Teacher Assessment Reporting and Moderating Inclusive Education Researching Classroom Practice Middle Schooling Pedagogies
<p>Students must also choose 2 units at 100 Level, 2 units and 200 Level and 2 units at 300 Level from one of the following Science discipline areas:</p> <ul style="list-style-type: none"> Chemistry Biology/Ecology Environmental Science 		
<p>Students must also choose a second teaching area from those on offer.</p>		

Bachelor of Education Secondary Teaching (Music)

DURATION	ANNUAL FEE	START DATES
4 years	\$16,480 AUD	February & July
ENTRY REQUIREMENTS:		
<ul style="list-style-type: none"> A minimum overall IELTS score of 6.0 with no band less than 6.0, or equivalent. Successful completion of Australian Year 12 or equivalent. 		
ABOUT THE COURSE:		
<p>This degree provides students with knowledge and skills in the fields of Music (contemporary and classical) and Education that will enable graduates to apply for registration as a Music Teacher. Students can select from a wide range of specialist electives to obtain a second teaching area.</p> <p>The education studies component is practice focused with students undertaking professional experience in schools and other learning sites generally from the third year of their course. Students are also encouraged to undertake field/professional experience in remote schools. *See Note</p>		
CAREER OPPORTUNITIES:		
The course prepares graduates to teach Music in Secondary School.		
PROFESSIONAL RECOGNITION:		
<p>Although CDU are currently seeking national accreditation through the Australian Institute of Teaching and School Leadership (AITSL) accreditation process, prospective students are advised to check with the teacher registration authority in their state or territory regarding the suitability of the course for the purpose of teaching registration in that jurisdiction. Students will need to meet the English language entry requirements for registration.</p>		
COURSE STRUCTURE:		
Core units include:		
Year 1	Year 2	Year 3
<ul style="list-style-type: none"> Teacher as Learner Introductory Language of Music Introductory Instrumental and Vocal Studies 	<ul style="list-style-type: none"> Music 1 Music 2 Intermediate Instrumental and Vocal Studies History and the Performing Musician Teaching in Context Approaches to Education Child and Adolescent Development Promoting Positive Behaviours Teaching Indigenous Learners 	<ul style="list-style-type: none"> Advanced Music Theory The Professional Teacher Assessment Reporting and Moderating Inclusive Education Researching Classroom Practice Advanced Instrumental and Vocal Studies
<p>Students must also choose a second teaching area from those on offer.</p>		

Bachelor of Education Secondary Teaching (Information Technology)

DURATION	ANNUAL FEE	START DATES
4 years	\$16,480 AUD	February & July
ENTRY REQUIREMENTS:		
<ul style="list-style-type: none"> A minimum overall IELTS score of 6.0 with no band less than 6.0, or equivalent. Successful completion of Australian Year 12 or equivalent. 		
ABOUT THE COURSE:		
<p>The education component is practice focused with students undertaking professional experience in schools and other learning sites. Students are also encouraged to undertake field/professional experience in remote schools. External students can normally complete their professional experience in their home towns. *See Note</p>		
CAREER OPPORTUNITIES:		
The course prepares graduates to teach Information in Secondary School.		
PROFESSIONAL RECOGNITION:		
<p>Although CDU are currently seeking national accreditation through the Australian Institute of Teaching and School Leadership (AITSL) accreditation process, prospective students are advised to check with the teacher registration authority in their state or territory regarding the suitability of the course for the purpose of teaching registration in that jurisdiction. Students will need to meet the English language entry requirements for registration.</p>		
COURSE STRUCTURE:		
Core units include:		
Year 1	Year 2	Year 3
<ul style="list-style-type: none"> System Analysis and Design Teacher as Learner Software Now Computing Fundamentals Operating Systems and Applications Network Engineering Concepts 	<ul style="list-style-type: none"> Database Concepts Organisational Security Information Technology 1 Information Technology 2 Teaching in Context Approaches to Education Child and Adolescent Development Promoting Positive Behaviours Teaching Indigenous Learners Exploring Middle Schooling Mobile Web Structures Project Management 	<ul style="list-style-type: none"> The Professional Teacher Assessment Reporting and Moderating Inclusive Education Researching Classroom Practice Middle School Pedagogies Human Computer Interaction Design
<p>Students must complete 4 units from one of the following areas:</p> <ul style="list-style-type: none"> Information Systems Web 		

Bachelor of Education Secondary Teaching (Humanities and Social Sciences)

DURATION	ANNUAL FEE	START DATES
4 years	\$16,480 AUD	February & July
ENTRY REQUIREMENTS:		
<ul style="list-style-type: none"> A minimum overall IELTS score of 6.0 with no band less than 6.0, or equivalent. Successful completion of Australian Year 12 or equivalent. 		
ABOUT THE COURSE:		
<p>This degree provides students with knowledge and skills in a range of disciplines drawn from the Humanities, Social Sciences and Education that will enable graduates to apply for registration as a teacher of Humanities curriculum areas (including the option of second languages), in addition to a second teaching area drawn from another field of study. Students can select a second teaching area from a range of specialist electives to suit their interests.</p> <p>The education studies component is practice focused with students undertaking professional experience in schools and other learning sites generally from the third year of their course. Students are also encouraged to undertake field/professional experience in remote schools. *See Note</p>		
CAREER OPPORTUNITIES:		
The course prepares graduates to teach Humanities and Social Sciences in Secondary School.		
PROFESSIONAL RECOGNITION:		
<p>Although CDU are currently seeking national accreditation through the Australian Institute of Teaching and School Leadership (AITSL) accreditation process, prospective students are advised to check with the teacher registration authority in their state or territory regarding the suitability of the course for the purpose of teaching registration in that jurisdiction. Students will need to meet the English language entry requirements for registration.</p>		
COURSE STRUCTURE:		
Core units include:		
Year 1	Year 2	Year 3
<ul style="list-style-type: none"> Teacher as Learner 	<ul style="list-style-type: none"> Teaching in Context Approaches to Education Child and Adolescent Development Promoting Positive Behaviours Teaching Indigenous Learners Exploring Middle Schooling 	<ul style="list-style-type: none"> The Professional Teacher Assessment Reporting and Moderating Inclusive Education Researching Classroom Practice Middle Schooling Pedagogies
<p>Students must also choose 1 of the following teaching areas within the Humanities and Social Sciences:</p> <ul style="list-style-type: none"> History Political Science Geography Languages (Greek, Indonesia, Chinese) 		
<p>Students must also choose a second teaching area from those on offer.</p>		

NOTE: Students must have cleared a Police Check and/or Working with ChildrenCheck before they can undertake practice teaching. Students whose Police Check and/or Working with Children Check are not cleared by the education sectors will not be able to undertake practice teaching and will not therefore be able to complete the requirements of the course.

Engineering



CDU has a fantastic learning environment with expertise, support and research facilities. CDU labs are well equipped with state of the art technologies to facilitate the various research activities.

Farha Sattar - Pakistan



Master of Engineering

DURATION	ANNUAL FEE	START DATES				
2 years	\$21,440 AUD	February & July				
ENTRY REQUIREMENTS:						
<ul style="list-style-type: none"> A minimum overall IELTS score of 6.5 with no band less than 6.0, or equivalent. Successful completion of a recognised Bachelor of Engineering, Bachelor of Engineering Science, Bachelor of Engineering Technology, Bachelor of Technology or equivalent in Chemical, Civil, Electrical and Electronics, Mechanical Engineering or an approved equivalent discipline. 						
ABOUT THE COURSE:						
<p>This course is offered to engineering technologists wishing to upgrade their qualifications within specific areas of engineering:</p> <ul style="list-style-type: none"> Chemical Engineering Civil Engineering Electrical and Electronics Engineering Mechanical Engineering <p>The course combines coursework and project work to provide interest and challenge to students. In addition to the technical knowledge expected in a postgraduate course, there is an emphasis on the themes of sustainability, creativity, teamwork, design and leadership throughout the program.</p> <p>The course includes a 12-week work experience component, which ensures graduates are job-ready and familiar with engineering employment opportunities.</p> <p>All applicants must indicate their area of specialisation by selecting a stream from the list provided.</p>						
CAREER OPPORTUNITIES:						
<p>The career opportunities for graduates of this course exist in higher level engineering positions, project management and in research.</p>						
PROFESSIONAL RECOGNITION:						
<p>This program meets the requirements for accreditation by Engineers Australia at the level of professional engineer. As this program has recently commenced, it is currently provisionally accredited. Full accreditation is expected after the course produces its first graduates.</p>						
COURSE STRUCTURE:						
Core units include:						
<table border="1"> <thead> <tr> <th>Year 1</th> <th>Year 2</th> </tr> </thead> <tbody> <tr> <td> <ul style="list-style-type: none"> Project Management Tools and Techniques Professional Practice Environmental Awareness and Sustainability </td> <td> <ul style="list-style-type: none"> Entrepreneurship for Professionals Commercialisation of Technology Risk and Reliability Management Thesis System Design </td> </tr> </tbody> </table>	Year 1	Year 2	<ul style="list-style-type: none"> Project Management Tools and Techniques Professional Practice Environmental Awareness and Sustainability 	<ul style="list-style-type: none"> Entrepreneurship for Professionals Commercialisation of Technology Risk and Reliability Management Thesis System Design 		
Year 1	Year 2					
<ul style="list-style-type: none"> Project Management Tools and Techniques Professional Practice Environmental Awareness and Sustainability 	<ul style="list-style-type: none"> Entrepreneurship for Professionals Commercialisation of Technology Risk and Reliability Management Thesis System Design 					
Specialisations are shown below and include an example of the typical units studied:						
Chemical Engineering						
<table border="1"> <thead> <tr> <th>Year 1</th> <th>Year 2</th> </tr> </thead> <tbody> <tr> <td> <ul style="list-style-type: none"> Separation Processes Chemical Engineering Thermodynamics Reactor Design Hydrocarbon Processing </td> <td> <ul style="list-style-type: none"> Process Control and Simulation Applied Heat and Mass Transfer </td> </tr> </tbody> </table>	Year 1	Year 2	<ul style="list-style-type: none"> Separation Processes Chemical Engineering Thermodynamics Reactor Design Hydrocarbon Processing 	<ul style="list-style-type: none"> Process Control and Simulation Applied Heat and Mass Transfer 		
Year 1	Year 2					
<ul style="list-style-type: none"> Separation Processes Chemical Engineering Thermodynamics Reactor Design Hydrocarbon Processing 	<ul style="list-style-type: none"> Process Control and Simulation Applied Heat and Mass Transfer 					

Civil Engineering					
<table border="1"> <thead> <tr> <th>Year 1</th> <th>Year 2</th> </tr> </thead> <tbody> <tr> <td> <ul style="list-style-type: none"> Road and Traffic Engineering Water Resources Engineering Concrete Design Steel Design </td> <td> <ul style="list-style-type: none"> Structural Analysis Engineering in Emergencies </td> </tr> </tbody> </table>	Year 1	Year 2	<ul style="list-style-type: none"> Road and Traffic Engineering Water Resources Engineering Concrete Design Steel Design 	<ul style="list-style-type: none"> Structural Analysis Engineering in Emergencies 	
Year 1	Year 2				
<ul style="list-style-type: none"> Road and Traffic Engineering Water Resources Engineering Concrete Design Steel Design 	<ul style="list-style-type: none"> Structural Analysis Engineering in Emergencies 				
Electrical and Electronics Engineering					
<table border="1"> <thead> <tr> <th>Year 1</th> <th>Year 2</th> </tr> </thead> <tbody> <tr> <td> <ul style="list-style-type: none"> Digital Signal Processing Biomedical Engineering Analogue Devices </td> <td> <ul style="list-style-type: none"> Wireless Communication Systems Power Systems Analysis Control Systems </td> </tr> </tbody> </table>	Year 1	Year 2	<ul style="list-style-type: none"> Digital Signal Processing Biomedical Engineering Analogue Devices 	<ul style="list-style-type: none"> Wireless Communication Systems Power Systems Analysis Control Systems 	
Year 1	Year 2				
<ul style="list-style-type: none"> Digital Signal Processing Biomedical Engineering Analogue Devices 	<ul style="list-style-type: none"> Wireless Communication Systems Power Systems Analysis Control Systems 				
Mechanical Engineering					
<table border="1"> <thead> <tr> <th>Year 1</th> <th>Year 2</th> </tr> </thead> <tbody> <tr> <td> <ul style="list-style-type: none"> Dynamics of Engineering Systems Control Systems Applied Fluid Mechanics </td> <td> <ul style="list-style-type: none"> Applied Heat and Mass Transfer Engines and Turbomachinery Machine Design </td> </tr> </tbody> </table>	Year 1	Year 2	<ul style="list-style-type: none"> Dynamics of Engineering Systems Control Systems Applied Fluid Mechanics 	<ul style="list-style-type: none"> Applied Heat and Mass Transfer Engines and Turbomachinery Machine Design 	
Year 1	Year 2				
<ul style="list-style-type: none"> Dynamics of Engineering Systems Control Systems Applied Fluid Mechanics 	<ul style="list-style-type: none"> Applied Heat and Mass Transfer Engines and Turbomachinery Machine Design 				

Bachelor of Engineering

DURATION	ANNUAL FEE	START DATES
4 years	\$21,360 AUD	February & July

ENTRY REQUIREMENTS:

- A minimum overall IELTS score of 6.0 with no band less than 6.0, or equivalent.
- Successful completion of Australian Year 12 or equivalent.
- Successful completion of Australian Year 12 Mathematics or equivalent.

ABOUT THE COURSE:

This course includes specialisations in chemical engineering, civil engineering, electrical and electronics engineering and mechanical engineering. Emphasis is placed on learning through project work with students being exposed to professional engineering practice through guest lectures by practising engineers, site visits and work experience.

CDU engineering courses were developed in consultation with industry representatives. Students graduate with a solid foundation of engineering studies as well as the advantage of an education that is directly aligned with industry requirements.

CAREER OPPORTUNITIES:

Career opportunities for graduates exist in design and construction, buildings and town planning, new and sustainable forms of energy, digital control, computer control of machines, water supply and treatment, environmental protection, management, marketing and technical advice.

PROFESSIONAL RECOGNITION:

Graduates of the Civil, Electrical and Electronics and Mechanical engineering streams are eligible for membership of Engineers Australia at the level of Professional Engineer.

COURSE STRUCTURE:

Core units include:

Year 1	Year 2
<ul style="list-style-type: none"> ▪ Concepts of Chemical Engineering ▪ Statics ▪ Engineering Foundations ▪ Electrical Engineering ▪ Mathematics 1A ▪ Mathematics 1B 	<ul style="list-style-type: none"> ▪ Dynamics ▪ Project Management ▪ Mathematics 2A ▪ Mathematics 2B

Year 3	Year 4
<ul style="list-style-type: none"> ▪ Safety, Risk and Reliability ▪ Industrial Experience 	<ul style="list-style-type: none"> ▪ Thesis ▪ Integrated Design ▪ Environmental Awareness and Sustainability

Specialisations are shown below and include an example of the typical units studied:

Chemical Engineering

Year 1 & 2	Year 3 & 4
<ul style="list-style-type: none"> ▪ Chemical Concepts ▪ Organic and Inorganic Chemistry ▪ Process Analysis ▪ Fluid and Thermodynamics 	<ul style="list-style-type: none"> ▪ Separation Process Principles ▪ Chemical Engineering Thermodynamics ▪ Reactor Design ▪ Hydrocarbon Processing ▪ Process Control and Simulation ▪ Applied Heat and Mass Transfer

Civil Engineering

Year 1 & 2	Year 3 & 4
<ul style="list-style-type: none"> ▪ Mechanics of Solids ▪ Surveying and Construction ▪ Fluid and Thermodynamics ▪ Hydraulics and Soil Mechanics 	<ul style="list-style-type: none"> ▪ Geomechanics ▪ Engineering Computing ▪ Materials Engineering ▪ Road and Traffic Engineering ▪ Water Resource Engineering ▪ Concrete Design ▪ Steel Design ▪ Structural Analysis

Electrical and Electronics Engineering

Year 1 & 2	Year 3 & 4
<ul style="list-style-type: none"> ▪ Analogue Electronics ▪ Electrical Circuit Analysis ▪ Electrical Machines and Power Systems ▪ Digital Systems and Computer Architecture 	<ul style="list-style-type: none"> ▪ Systems Modelling ▪ Embedded and Mobile Systems ▪ C Programming ▪ Digital Signal Processing ▪ Analogue Devices ▪ Wireless Communication Systems ▪ Power Systems Analysis ▪ Control Systems

Mechanical Engineering

Year 1 & 2	Year 3 & 4
<ul style="list-style-type: none"> ▪ Mechanics of Solids ▪ Manufacturing ▪ Fluid and Thermodynamics ▪ Engineering Computing 	<ul style="list-style-type: none"> ▪ Systems Modelling ▪ Materials Engineering ▪ Dynamics and Engineering Systems ▪ Control Systems ▪ Applied Fluid Mechanics ▪ Applied Heat and Mass Transfer ▪ Engines and Turbomachinery ▪ Machine Design

Bachelor of Engineering Science

DURATION	ANNUAL FEE	START DATES
3 years	\$21,360 AUD	February & July

ENTRY REQUIREMENTS:

- A minimum overall IELTS score of 6.0 with no band less than 6.0, or equivalent.
- Successful completion of Australian Year 12 or equivalent.
- Successful completion of Australian Year 12 Mathematics or equivalent.

ABOUT THE COURSE:

This course includes specialisations in chemical engineering, civil engineering, electrical and electronics engineering and mechanical engineering. Emphasis is placed on learning through project work with students being exposed to engineering practice through guest lectures by practising engineers, site visits and work experience.

PROFESSIONAL RECOGNITION:

This course is the first component of a two part accredited pathway consisting of the Bachelor of Engineering Science to be followed by the Master of Engineering. Graduates completing both the Bachelor of Engineering Science and the Master of Engineering in Civil, Electrical and Electronics and Mechanical engineering streams are eligible to apply for membership of Engineers Australia at the level of Professional Engineer. The Chemical engineering stream of this pathway is designed to meet the requirements for accreditation by Engineers Australia at the level of professional engineer and accreditation is currently being sought. Accreditation of any new engineering specialisation occurs in the first year it is offered.

COURSE STRUCTURE:

Core units include:

Year 1 & 2	Year 3 & 4
<ul style="list-style-type: none"> ▪ Concepts of Chemical Engineering ▪ Statics ▪ Engineering Foundations ▪ Electrical Engineering ▪ Mathematics 1A ▪ Mathematics 1B 	<ul style="list-style-type: none"> ▪ Dynamics ▪ Project Management ▪ Mathematics 2A ▪ Mathematics 2B ▪ Safety, Risk and Reliability ▪ Industrial Experience

Specialisations are shown below and include an example of the typical units studied:

Chemical Engineering

Year 1 & 2	Year 3 & 4
<ul style="list-style-type: none"> ▪ Chemical Concepts ▪ Organic and Inorganic Chemistry ▪ Process Analysis ▪ Fluid and Thermodynamics 	<ul style="list-style-type: none"> ▪ Separation Process Principles ▪ Materials Engineering ▪ Instrumentation for Scientists and Engineers

Civil Engineering

Year 1 & 2	Year 3 & 4
<ul style="list-style-type: none"> ▪ Mechanics of Solids ▪ Surveying and Construction ▪ Fluid and Thermodynamics ▪ Hydraulics and Soil Mechanics 	<ul style="list-style-type: none"> ▪ Geomechanics ▪ Engineering Computing ▪ Materials Engineering

Electrical and Electronics Engineering

Year 1 & 2	Year 3 & 4
<ul style="list-style-type: none"> ▪ Analogue Electronics ▪ Electrical Circuit Analysis ▪ Electrical Machines and Power Systems ▪ Digital Systems and Computer Architecture 	<ul style="list-style-type: none"> ▪ Systems Modelling ▪ Embedded and Mobile Systems ▪ C Programming

Mechanical Engineering

Year 1 & 2	Year 3 & 4
<ul style="list-style-type: none"> ▪ Mechanics of Solids ▪ Manufacturing ▪ Fluid and Thermodynamics ▪ Engineering Computing 	<ul style="list-style-type: none"> ▪ Systems Modelling ▪ Materials Engineering ▪ Dynamics and Engineering Systems ▪ Control Systems ▪ Applied Fluid Mechanics ▪ Applied Heat and Mass Transfer ▪ Engines and Turbomachinery ▪ Machine Design

Associate Degree in Process Engineering

DURATION	ANNUAL FEE	START DATES
2 years	\$21,360 AUD	February & July

ENTRY REQUIREMENTS:

- A minimum overall IELTS score of 6.0 with no band less than 6.0, or equivalent.
- Successful completion of Australian Year 12 or equivalent.
- Successful completion of Australian Year 12 Mathematics or equivalent.

ABOUT THE COURSE:
This course provides the academic background and practical training for middle level employment in the area of process engineering. It is suitable for people already working in process engineering and wishing to upgrade their qualifications as well as for others who are seeking to enter this area.

Upon completion, students are able to transfer to the Chemical Engineering stream of the Bachelor of Engineering.

CAREER OPPORTUNITIES:
This program provides the necessary academic background and practical training for mid-level engineering employment, such as engineering technical officer or site supervisor.

PROFESSIONAL RECOGNITION:
Accreditation by Engineers Australia at the level of Engineering Associate is currently being sought by the University.

COURSE STRUCTURE:
Core units include:

Year 1	Year 2
<ul style="list-style-type: none"> Concepts of Chemical Engineering Statics Engineering Foundations Electrical Engineering and Computing Chemical Concepts Organic and Inorganic Chemistry Introduction to Mathematics Mathematics 1A Concepts of Physics 	<ul style="list-style-type: none"> Process Analysis Fluid and Thermodynamics Project Management Industrial Experience

Diploma of Engineering

(Higher Education Program)

DURATION	ANNUAL FEE	START DATES
1 year	\$21,360 AUD	February & July

ENTRY REQUIREMENTS:

- A minimum overall IELTS score of 6.0 with no band less than 6.0, or equivalent.
- Successful completion of Australian Year 12 or equivalent.
- Students must have a sound understanding of Mathematics.

ABOUT THE COURSE:
This course is designed for students who wish to study engineering at Diploma level. It provides basic technical skills with which graduates can commence entry level work in engineering related areas or go on to further their studies in engineering.

The Diploma of Engineering provides a pathway into the Associate Degree in Process Engineering or the Bachelor of Engineering.

CAREER OPPORTUNITIES:
Graduates will find employment in engineering related areas, such as site supervisor, technical officer and engineering assistant.

COURSE STRUCTURE:
Core units include:

- Concepts of Chemical Engineering
- Statics
- Electrical Engineering
- Introduction to Mathematics
- Concepts of Physics



Environmental Science



Master of Environmental Management

DURATION	ANNUAL FEE	START DATES
2 years	\$20,320 AUD	February & July
ENTRY REQUIREMENTS:		
<ul style="list-style-type: none"> A minimum overall IELTS score of 6.5 with no band less than 6.0, or equivalent. Successful completion of a recognised bachelors degree, graduate diploma or honours degree or equivalent in a relevant field, such as biological science, earth science, environmental science, geography, geographic information, sustainability studies or other discipline as deemed appropriate. Applicants who hold a degree not in the disciplines listed above may be considered on the basis of relevant professional experience. 		
ABOUT THE COURSE:		
<p>This course provides postgraduate education for existing and future professionals on the background, principles and practices of environmental management, particularly in the context of wet-dry and semi-arid tropical ecosystems. This course is also highly relevant to those working in other ecosystems and also includes a focus on the social context within which environmental management takes place.</p> <p>Student-centred, resource and activity-based learning materials provide a stimulating program that is balanced between updating content knowledge and technical skills, developing conceptual skills, and the application of these for natural resource management within its social context. The program continues to respond to the changing needs of employers and other stakeholders, with the latest outcomes of regional research incorporated into learning materials.</p>		
CAREER OPPORTUNITIES:		
<p>Graduates of this course may seek employment in areas of research or environmental and natural resources management, within regional natural resource management agencies, environmental NGOs, Indigenous natural resources management organisations, consultancy firms or the resources sector. Students with consistently high grades and a high-quality research project may be able to pursue a higher degree by research.</p>		
COURSE STRUCTURE:		
<p>The course structure consists of specialist elective units, general elective units and a research project taken at postgraduate level.</p>		
Students must choose 4 units from the following specialist electives:		
<ul style="list-style-type: none"> Community Engagement for Biosecurity and Natural Resource Management Natural Resources and Indigenous Livelihoods Ecology and Management of Tropical Forests and Savannas Landscape Ecology and GIS Statistical Methods for Impact Analysis Tropical Wetland and Coastal Management Environmental Planning and Policy Carbon Economies Wildlife Management 		

Students must choose 4 units from Elective Group A:

- Tropical Invaders and Biosecurity
- Remote Sensing
- Ecological Restoration and Conservation
- Field Studies in Tropical and Desert Landscapes
- Catchments to Coasts
- Environmental Monitoring and Modelling
- Fire Ecology and Management in Northern Australia
- Applied Geographic Information Systems
- Professional Practice in Environmental Management

Students must choose 4 units from Elective Group B:

- Additional units from Specialist Electives Group A
- Professional Skills
- Postgraduate units from The Australian Centre for Indigenous Knowledge and Education at CDU
- Other appropriate postgraduate CDU unit as approved by the Course Coordinator

Students must also undertake a Research Project.

Bachelor of Environmental Science

DURATION	ANNUAL FEE	START DATES
3 years	\$20,160 AUD	February & July

ENTRY REQUIREMENTS:

- A minimum overall IELTS score of 6.0 with no band less than 6.0, or equivalent.
- Successful completion of Australian Year 12 or equivalent.

ABOUT THE COURSE:

This course is a professionally oriented, multidisciplinary program that enables students to acquire a broad base of theoretical knowledge and practical skills in unique environments of the Northern Territory. It includes a strong focus on environmental science and management in tropical and desert environments in the Australian and Asia-Pacific region. The course provides students with a thorough knowledge of environmental science and management, together with the ability to access information efficiently and apply scientific methodologies across a hierarchy of scales ranging from the level of organisms in communities through to landscape level ecosystem functioning and global processes in order to evaluate, understand and predict the nature of environmental change.

Students will be able to explore the wider significance of human impacts on the environment and undertake specialisations and units that focus on climate change and variability, wildlife biology and conservation, natural and cultural resource management and marine and coastal management, invasive species, biodiversity and Indigenous perspectives and the relationships between people and landscapes.

CAREER OPPORTUNITIES:

Graduates may gain employment in professional areas of environmental science and environmental management, or proceed to higher levels of research training.

COURSE STRUCTURE:

Core units include:

Year 1	Year 2
<ul style="list-style-type: none"> Earth Systems The Diversity of Life Environmental and Planning Law 	<ul style="list-style-type: none"> Indigenous Cultures and the Environment Introductory Ecology Environmental Issues Applied Geographical Information Systems

Specialisations are shown below and include an example of the typical units studied:

Wildlife and Conservation Biology Stream

Year 2	Year 3
<ul style="list-style-type: none"> Design and Analysis of Biological Studies Environmental Physiology Introduction to Remote Sensing Environmental Survey and Monitoring Skills Ecosystems and Biodiversity 	<ul style="list-style-type: none"> Wildlife Management Organisms and Environmental Change Ecological Restoration and Conservation Field Studies in Tropical and Desert Landscapes Environmental Monitoring and Modelling Professional Practice in Science

Natural and Cultural Resources Management

Select 4 units from Group A and 4 units from Group B

Group A	Group B
<ul style="list-style-type: none"> Introduction to Remote Sensing Fire Ecology and Management in North Australia Tropical Invaders and Biosecurity Ecological Restoration and Conservation Field Studies in Tropical and Desert Landscapes Catchment to Coast Environmental Monitoring and Modelling Professional Practice in Science 	<ul style="list-style-type: none"> Indigenous Knowledge's: Representing and Recording Country Indigenous Engagements: Land and Water Global Perspectives on Indigenous Land and Sea Management Cultural Site Management Archaeology and Cultural Resources Management Impact Assessment and Management of Culture Sites Environmental Economics Project Management Society and Environmental

Marine and Coastal Management

Year 2	Year 3
<ul style="list-style-type: none"> Introductory Chemistry Design and Analysis Indigenous Engagements: Land and Water Introduction to Remote Sensing Environmental Survey and Monitoring Skills 	<ul style="list-style-type: none"> Global Perspectives on Indigenous Land and Sea Management Catchment to Coasts Environmental Monitoring and Modelling Professional Practice in Science

Climate Change

Year 2	Year 3
<ul style="list-style-type: none"> Introduction to Remote Sensing Weather and Climate Climate Change and Variability 	<ul style="list-style-type: none"> Environmental Monitoring and Modelling Climate and Environmental Risk Assessment Adaption to Climate Change

Diploma of Conservation and Land Management

DURATION	TUITION FEE	START DATES
.5 year	\$6,320 AUD	July

ENTRY REQUIREMENTS:

- A minimum overall IELTS score of 5.5 with no band less than 5.5, or equivalent.
- Successful completion of Certificate IV in Conservation and Land Management

ABOUT THE COURSE:

The Diploma of Conservation and Land Management reflects the role of personnel working in management positions with technical level skill in land management roles.

CAREER OPPORTUNITIES:

Possible careers include lands, parks and wildlife manager or senior ranger.

COURSE STRUCTURE:

Units include:

- Conduct field research into natural and cultural resources
- Develop conservation strategies for cultural resources
- Produce maps for land management purposes
- Develop a management plan for a designated area
- Conduct biological surveys
- Manipulate and analyse data within geographic information systems
- Collect and classify plants
- Collect and manage data
- Prepare reports
- Plan and develop interpretive activities

Certificate IV in Conservation and Land Management

DURATION	TUITION FEE	START DATES
.5 year	\$6,320 AUD	February

ENTRY REQUIREMENTS:

- A minimum overall IELTS score of 5.5 with no band less than 5.5, or equivalent.
- Successful completion of Certificate III in Conservation and Land Management

ABOUT THE COURSE:

This qualification allows individuals to develop post-trade skills and knowledge to become specialists within the conservation and land management industry. This qualification enables a selection of units from indigenous land management, natural area restoration conservation earthworks or lands, parks and wildlife to create a general qualification as a job focus.

CAREER OPPORTUNITIES:

Possible careers include senior conservation worker.

COURSE STRUCTURE:

Units include:

- Maintain OHS processes
- Cost a project
- Monitor biodiversity
- Plan the implementation of revegetation works
- Define the pest problem in a local area and develop a pest management action plan and develop monitoring procedures for the local pest management strategy
- Analyse and present research information
- Manipulate & analyse data in geographic information systems

Certificate III in Conservation and Land Management

DURATION	TUITION FEE	START DATES
.5 year	\$6,320 AUD	July

ENTRY REQUIREMENTS:

- A minimum overall IELTS score of 5.5 with no band less than 5.5, or equivalent.
- Successful completion of Certificate II in Conservation and Land Management

ABOUT THE COURSE:

The qualification enables individuals to select an Indigenous land management, lands, parks and wildlife or natural area management context as a job focus or a mix of these.

CAREER OPPORTUNITIES:

Possible careers include Indigenous lands worker, national parks worker, revegetation worker, land rehabilitation worker.

COURSE STRUCTURE:

Units include:

- Contribute to OHS processes
- Implement & monitor environmentally sustainable work practices
- Develop community networks
- Prepare, apply, transport, handle and store chemicals
- Supervise park visitor activities
- Maintain natural areas and control weeds
- Conduct operational inspection of park facilities
- Implement vertebrate pest control program
- Survey pest animals and apply animal trapping techniques
- Respond to & suppress wildfire

Certificate II in Conservation and Land Management

DURATION	TUITION FEE	START DATES
.5 year	\$6,320 AUD + \$16.80 Fee	February

ENTRY REQUIREMENTS:

- A minimum overall IELTS score of 5.5 with no band less than 5.5, or equivalent.
- Successful completion of Australian Year 11 or equivalent.

ABOUT THE COURSE:

This qualification provides an occupational outcome in conservation and land management. The work would be carried out under general guidance and supervision. The qualification enables individuals to select an indigenous land management, conservation earthworks, lands, parks and wildlife or natural area management context as a job focus or a mix of these.

CAREER OPPORTUNITIES:

Possible careers include conservation worker.

COURSE STRUCTURE:

Units include:

- Operate and maintain chainsaws
- Apply chemicals under supervision
- Recognise fauna
- Record information about country
- Operate quad bikes
- Carry out natural area restoration works
- Recognise plants
- Plant trees and shrubs and treat weeds
- Conduct visual inspection of park facilities
- Operate 4x4 vehicle and perform complex 4x4 operations

Health Sciences



Graduate Diploma in Psychology

DURATION	ANNUAL FEE	START DATES
1 year	\$16,320 AUD	February & July
ENTRY REQUIREMENTS: <ul style="list-style-type: none"> A minimum overall IELTS score of 6.5 with no band less than 6.0, or equivalent. Successful completion of a recognised bachelors degree or equivalent together with successful completion of APAC accredited first year psychology units. Students who have completed an APAC accredited undergraduate degree are not eligible for entry. 		
ABOUT THE COURSE: <p>This course is designed to meet the needs of graduates from other disciplines who wish to pursue a career in psychology or related fields by providing them with the opportunity to undertake an Australian Psychology Accreditation Council (APAC) accredited undergraduate major in psychology. It is particularly suited to those who want subsequent entry to fourth year Psychology courses.</p> <p>Note: Students must have cleared a Police Check and/or Working with Children check before they can undertake practice teaching. Students whose Police Checks and/or Working with Children check are not cleared by the relevant education sectors will not be able to undertake practice teaching and will not therefore be able to complete the requirements of the course.</p>		
CAREER OPPORTUNITIES: <p>Career opportunities available to graduates include: youth work, advertising and marketing, policy and research, consumer research, industrial relations, human resources, program coordination and welfare. Major employers include State and Territory and Commonwealth government departments, local business and multinational corporations, as well as child, family and aged care services, educational and rehabilitation community-based agencies.</p>		
PROFESSIONAL RECOGNITION: <p>As a course accredited with APAC, students with a Graduate Diploma who go on to complete Honours in Psychology are eligible then to register as an intern (ie. probationary) psychologist in their State or Territory and train as a psychologist through a supervised internship or via a specialist coursework masters or doctoral program</p>		
COURSE STRUCTURE: <p>Core units include:</p> <ul style="list-style-type: none"> Developmental Psychology Research Design and Analysis Advanced Research Design and Analysis 		
<p>Students must choose 5 units from the specialised electives below:</p> <ul style="list-style-type: none"> Biological Bases of Behaviour Cognition and Language Theories of Personality Behavioural Neuro-psychology Introduction to Behavioural Therapies Abnormal Psychology 		

Bachelor of Health Sciences

DURATION	ANNUAL FEE	START DATES								
3 years	\$19,840 AUD	February & July								
ENTRY REQUIREMENTS: <ul style="list-style-type: none"> A minimum overall IELTS score of 6.0 with no band less than 6.0, or equivalent. Successful completion of Australian Year 12. 										
ABOUT THE COURSE: <p>This course that provides students with the knowledge and skills required to work in areas of health promotion, community health development, Indigenous health, and health services management. The course has an emphasis on understanding the challenges of working in diverse contexts of urban, rural and remote communities.</p>										
CAREER OPPORTUNITIES: <p>Graduates may find employment in areas of health promotion, community health development, Indigenous health and health services management.</p>										
COURSE STRUCTURE: <p>Core units include:</p> <table border="1"> <thead> <tr> <th>Year 1</th> <th>Year 2</th> <th>Year 3</th> </tr> </thead> <tbody> <tr> <td> <ul style="list-style-type: none"> Australian Health Care Systems Ethics in Health Care Basics of Epidemiology Communication Skills Project Management </td> <td> <ul style="list-style-type: none"> Health Promotion Indigenous Health Perspectives Health Care Policy Health Sociology Research & Evidence Based Health Developmental Psychology </td> <td> <ul style="list-style-type: none"> Primary Healthcare Planning & Evaluation Exploring Public Health Working with & Developing Communities </td> </tr> </tbody> </table>			Year 1	Year 2	Year 3	<ul style="list-style-type: none"> Australian Health Care Systems Ethics in Health Care Basics of Epidemiology Communication Skills Project Management 	<ul style="list-style-type: none"> Health Promotion Indigenous Health Perspectives Health Care Policy Health Sociology Research & Evidence Based Health Developmental Psychology 	<ul style="list-style-type: none"> Primary Healthcare Planning & Evaluation Exploring Public Health Working with & Developing Communities 		
Year 1	Year 2	Year 3								
<ul style="list-style-type: none"> Australian Health Care Systems Ethics in Health Care Basics of Epidemiology Communication Skills Project Management 	<ul style="list-style-type: none"> Health Promotion Indigenous Health Perspectives Health Care Policy Health Sociology Research & Evidence Based Health Developmental Psychology 	<ul style="list-style-type: none"> Primary Healthcare Planning & Evaluation Exploring Public Health Working with & Developing Communities 								
<p>Specialisations are shown below and include an example of the typical units studied:</p> <table border="1"> <thead> <tr> <th>Health Promotion</th> <th>Community Health Development</th> </tr> </thead> <tbody> <tr> <td> <ul style="list-style-type: none"> Introduction to Psychology A Health Education Chronic Conditions Management Remote Health Fieldwork Project </td> <td> <ul style="list-style-type: none"> Introduction to Psychology A Chronic Conditions Management Human Service Organisations Remote Health Fieldwork Project </td> </tr> <tr> <th>Indigenous Health</th> <th>Health Services Management</th> </tr> <tr> <td> <ul style="list-style-type: none"> Indigenous Knowledges and Experience: History and Colonisation Health Education Chronic Conditions Management Cultural Transactions: Communication and Negotiation Fieldwork Project </td> <td> <ul style="list-style-type: none"> Fundamentals of Marketing Fundamentals of Management Introduction to Psychology A Remote Health Fieldwork Project </td> </tr> </tbody> </table>			Health Promotion	Community Health Development	<ul style="list-style-type: none"> Introduction to Psychology A Health Education Chronic Conditions Management Remote Health Fieldwork Project 	<ul style="list-style-type: none"> Introduction to Psychology A Chronic Conditions Management Human Service Organisations Remote Health Fieldwork Project 	Indigenous Health	Health Services Management	<ul style="list-style-type: none"> Indigenous Knowledges and Experience: History and Colonisation Health Education Chronic Conditions Management Cultural Transactions: Communication and Negotiation Fieldwork Project 	<ul style="list-style-type: none"> Fundamentals of Marketing Fundamentals of Management Introduction to Psychology A Remote Health Fieldwork Project
Health Promotion	Community Health Development									
<ul style="list-style-type: none"> Introduction to Psychology A Health Education Chronic Conditions Management Remote Health Fieldwork Project 	<ul style="list-style-type: none"> Introduction to Psychology A Chronic Conditions Management Human Service Organisations Remote Health Fieldwork Project 									
Indigenous Health	Health Services Management									
<ul style="list-style-type: none"> Indigenous Knowledges and Experience: History and Colonisation Health Education Chronic Conditions Management Cultural Transactions: Communication and Negotiation Fieldwork Project 	<ul style="list-style-type: none"> Fundamentals of Marketing Fundamentals of Management Introduction to Psychology A Remote Health Fieldwork Project 									

Bachelor of Medical Laboratory Science

DURATION	ANNUAL FEE	START DATES
4 years	\$21,120 AUD	February
ENTRY REQUIREMENTS:		
<ul style="list-style-type: none"> A minimum overall IELTS score of 6.0 with no band less than 6.0, or equivalent. Successful completion of Australian Year 12. 		
ABOUT THE COURSE:		
<p>This vocational and professionally oriented degree will prepare students for a career as medical scientists in the areas of diagnostic pathology, research, and specialised laboratories. Medical laboratory scientists are integral to the diagnosis and management of disease, through conducting research into the causes and cures of disease, and improving tests for disease detection.</p> <p>This course has a strong practical and industry-based focus, and students may have the opportunity to study and work in medical laboratories in the Northern Territory while undertaking the degree.</p> <p>Note: Students will be required to submit an annual National Criminal Record Check prior to commencing placement.</p>		
CAREER OPPORTUNITIES:		
<p>Graduates are employed in fields such as diagnostic pathology, forensic pathology, and research laboratories, as well as health management, public health departments, the Red Cross Blood Service, educational institutes and the pharmaceutical industry.</p>		
PROFESSIONAL RECOGNITION:		
<p>This course has been designed to meet the accreditation requirements of the Australian Institute of Medical Scientists (AIMS), to ensure all graduates display nationally recognisable skills.</p>		
COURSE STRUCTURE:		
Core units include:		
Year 1	Year 2	
<ul style="list-style-type: none"> Medical Laboratory Science Life of Cells Anatomy and Physiology 1 Anatomy and Physiology 2 Microbiology Chemical Concepts Organic and Inorganic Chemistry 	<ul style="list-style-type: none"> Haematology Biotechnology Clinical Microbiology 1 Immunology Histology and Histochemistry 	
Year 3	Year 4	
<ul style="list-style-type: none"> Cell Pathology Transfusion Medicine Microbiology Placement Haematology Placement Clinical Biochemistry Clinical Microbiology 2 DNA Analysis and Profiling 	<ul style="list-style-type: none"> Biochemistry Placement Histopathology Placement Rural/Remote Placement Professional Practice Consolidation 	

Bachelor of Midwifery

DURATION	ANNUAL FEE	START DATES
3 years	\$20,480 AUD	February
ENTRY REQUIREMENTS:		
<ul style="list-style-type: none"> A minimum overall IELTS score of 6.5 with no band less than 6.0, or equivalent. Successful completion of Australian Year 12. 		
ABOUT THE COURSE:		
<p>Supported by a framework of woman-centred care, and underpinned by the principles of primary health care, the Bachelor of Midwifery is a 3 year full time degree that prepares students to work as professional and contemporary midwives within a variety of care contexts.</p> <p>The course curriculum reflects the philosophy that midwifery is a profession in its own right and provides learning opportunities in order to prepare each graduate to function as a safe and competent midwife.</p> <p>Applicants are advised that midwifery is a profession which places considerable physical and psychological demands on the individual.</p> <p>Note: Students will be required to submit an annual National Criminal Record Check prior to commencing placement.</p>		
CAREER OPPORTUNITIES:		
<p>Graduates of this course satisfy the academic requirements for registration as a midwife in any state or territory in Australia.</p>		
PROFESSIONAL RECOGNITION:		
<p>Graduates of this course will be eligible to apply for registration by the Nursing and Midwifery Board of Australia (NMBA) to practice as a Midwife. Students will need to meet the English language entry requirements for registration.</p>		
COURSE STRUCTURE:		
Core units include:		
Year 1	Year 2	Year 3
<ul style="list-style-type: none"> Introduction to Midwifery Practice Fundamental Skills for Midwifery Practice Foundations of Primary Health Care Anatomy & Physiology Communication Skills 	<ul style="list-style-type: none"> Indigenous Health Perspectives Healthy Childbearing Professional Midwifery Practice Health Sociology Lifespan Development Research and Evidence-based Practice 	<ul style="list-style-type: none"> Women's Health Healthy Childbearing Professional Midwifery Practice Midwifery in Global Perspective Specialist Neonatal Care

Bachelor of Nursing (Pre Registration)

DURATION	ANNUAL FEE	START DATES
3 years	\$20,800 AUD	February & July
ENTRY REQUIREMENTS:		
<ul style="list-style-type: none"> A minimum overall IELTS score of 6.5 with no band less than 6.0, or equivalent. Successful completion of Australian Year 12. 		
ABOUT THE COURSE:		
<p>The underpinning principles of comprehensive primary health care, namely: cultural safety in practice, in particular to addressing the needs of Indigenous and multi-cultural Australians; recognising the value of using a population health approach for the prevention, early detection and management of chronic diseases; providing appropriate evidence-based care; and the ability to work in multi-disciplinary teams is embedded throughout the Bachelor of Nursing program in both content and assessment. These principles combined with education in the range of core knowledge and specialist technical nursing skills ensure that graduates can retrieve and apply knowledge and information to respond appropriately and ethically to the needs of diverse populations and function professionally as a Registered Nurse in a regional and global context.</p> <p>Note: Students will be required to submit an annual National Criminal Record Check prior to commencing placement.</p>		
CAREER OPPORTUNITIES:		
<p>Graduates of this course may gain employment in many areas, including hospitals, residential aged care, community health settings, schools, remote area communities, industry, public health, government or education.</p>		
PROFESSIONAL RECOGNITION:		
<p>Graduates of this course are eligible to apply for registration with the Nursing and Midwifery Board of Australia (NMBA) to practice as a Nurse. Students will need to meet the English language entry requirements for registration.</p>		
COURSE STRUCTURE:		
Core units include:		
Year 1	Year 2	Year 3
<ul style="list-style-type: none"> Psychosocial Nursing Fundamentals of Primary Health Care Introduction to Professional Nursing Fundamental Nursing Practice Anatomy and Physiology 	<ul style="list-style-type: none"> Health Sociology Mental Health Nursing Challenge and Response to Body Integrity Lifespan Development Nursing Practice Research and Evidence-based Health 	<ul style="list-style-type: none"> Public Health Challenges in Chronic and Complex Nursing Nursing in Primary, Secondary and Tertiary Settings Clinical Nursing Practice Professional Nursing

Bachelor of Pharmacy

DURATION	ANNUAL FEE	START DATES
4 years	\$22,480 AUD	February & July
ENTRY REQUIREMENTS:		
<ul style="list-style-type: none"> A minimum overall IELTS score of 6.5 with no band less than 6.0, or equivalent. Successful completion of Australian Year 12. 		
ABOUT THE COURSE:		
<p>The Bachelor of Pharmacy is a professional degree designed to meet the demands for pharmacy services in Australia. There is a particular focus on rural and remote practice to meet the unique and diverse needs of communities in these regions.</p> <p>Pharmacists are knowledgeable about the chemical, physical, and biological properties of drugs, how medications work, their usage, and their clinical effects. Pharmacists provide information, advice, and education on medicines and health issues enabling patients to achieve optimal health outcomes. Pharmacists are also involved in advising medical practitioners and other health care professionals on the interactions and side effects of medications, medication selection and dosage, and a range of other issues. Graduates will have a comprehensive understanding and knowledge of the basic sciences plus pharmaceuticals, pharmaco-therapeutics and pharmacy practice, decision making skills to identify and manage complex therapeutic problems within a multi-disciplinary health care team; the ability to develop an individual health care plan for patients with complex conditions, focussing on self-management; effective communication skills for professional pharmacy practice, enabling essential information transfer between pharmacists and patients, colleagues, and health care professionals to achieve positive health outcomes for individuals and communities, and an ability to practice effectively, efficiently, ethically, and at 'best practice' standards.</p>		
CAREER OPPORTUNITIES:		
<p>Graduates of this course may seek career opportunities in community pharmacy, hospital pharmacy, academia and the pharmaceutical industry.</p>		
PROFESSIONAL RECOGNITION:		
<p>This course satisfies the requirements of the Australian Pharmacy Council. Eligibility for registration in Australia will be granted by the Pharmacy Board of Australia.</p> <p>Students should check professional recognition requirements in their home country.</p>		
COURSE STRUCTURE:		
Core units include:		
Year 1	Year 2	
<ul style="list-style-type: none"> Fundamentals of Pharmacy Practice The Life of Cells Anatomy and Physiology Microbiology Chemical Concepts Organic and Inorganic Chemistry 	<ul style="list-style-type: none"> Pharmacology Biotechnology and Pharmacogenomics Design and Analysis of Biological Studies Biochemistry 	
Year 3	Year 4	
<ul style="list-style-type: none"> Remote Health Applied Pharmaceutics Applied Pharmacology to Pharmacy Practice Advanced Pharmaceutics Clinical Pharmacy Practice Clinical Pharmacokinetics Clinical Biochemistry 	<ul style="list-style-type: none"> Infectious Diseases Advanced Pharmacy Practice Therapeutics Integrated Pharmacy Practice Integrated Pharmacy Placement Therapeutics 	

Bachelor of Psychological Science

DURATION	ANNUAL FEE	START DATES
3 years	\$16,960 AUD	February & July

ENTRY REQUIREMENTS:

- A minimum overall IELTS score of 6.0 with no band less than 6.0, or equivalent.
- Successful completion of Australian Year 12.

ABOUT THE COURSE:

This is an Australian Psychology Accreditation Council (APAC) accredited three year course in psychology for students who wish to work with individuals and groups in diverse contexts. It also prepares students for an Honours program, as well as postgraduate professional coursework or supervised training in psychology.

In the Bachelor of Psychological Science you will be exposed to an integrated understanding of human behaviour including a social-cultural perspective, motivations, health and psychopathology as well as the fundamental premise of psychology as an empirically based science.

CAREER OPPORTUNITIES:

Graduates of this course may seek career opportunities in counselling, forensics, sports or rehabilitation in community, educational or organisational settings as well as work in consumer research, advertising and marketing fields.

PROFESSIONAL RECOGNITION:

The Bachelor of Psychological Science is accredited by the Australian Psychology Accreditation Council (APAC) and prepares students for entry into an Honours year in psychology. Upon completion of Honours students can undertake further professional coursework in a Masters of Professional Doctorate or supervised training for subsequent registration as a psychologist.

COURSE STRUCTURE:

Core units include:

Year 1	Year 2	Year 3
<ul style="list-style-type: none"> ▪ Introductory to Psychology 	<ul style="list-style-type: none"> ▪ Developmental Psychology ▪ Biological Bases of Behaviour ▪ Cognition and Language ▪ Research Design and Analysis 	<ul style="list-style-type: none"> ▪ Theories of Personality ▪ Learning and Motivation ▪ Advanced Research Design and Analysis ▪ Abnormal Psychology

Students must select 4 units from the specialist electives below:

- Alcohol and other Drugs Studies
- Social-Cultural Psychology
- Introduction to Forensic Psychology
- Counselling/Interventions in AOD
- Health Psychology
- Behavioural Neuro-Psychology
- Introduction to Behavioural Therapies
- Introduction to Counselling



Hospitality



Diploma of Hospitality

DURATION	ANNUAL FEE	START DATES
2 years	\$12,160 AUD	February & July

ENTRY REQUIREMENTS:

- A minimum overall IELTS score of 5.5 with no band less than 5.0, or equivalent.
- Successful completion of Australian Year 12 or equivalent.
- Successful completion of Certificate III and IV in Hospitality will grant up to 1 year advanced standing.

ABOUT THE COURSE:

This qualification provides the skills and knowledge for an individual to be competent in skilled operations and team leading or supervision. Work would be undertaken in various hospitality settings such as restaurants, hotels, motels, clubs, pubs, cafes and coffee shops.

The program is designed to give students flexible training options. There is a combination of on-campus and work experience training. On-campus training includes a range of practical activities in a simulated work environment.

This qualification provides the skills and knowledge for an individual to be competent as a manager in any hospitality functional area. This individual would possess a sound theoretical knowledge base and be able to use a range of specialised, technical or managerial competencies to plan, carry out and evaluate their own work and/or the work of their team.

CAREER OPPORTUNITIES:

Work would be undertaken in various hospitality settings such as restaurants, hotels, motels, clubs, pubs, cafes and coffee shops.

COURSE STRUCTURE:

Core units include:

- Provide quality customer service
- Manage quality customer service
- Work with colleagues and customers
- Work in a socially diverse environment
- Deal with conflict situations
- Interpret financial information
- Manage finances within a budget
- Prepare and monitor budgets
- Develop and update legal knowledge required for business compliance
- Coach others in job skills
- Roster staff
- Lead and manage people
- Manage workplace diversity
- Receive and store stock
- Control and order stock
- Monitor work operations
- Develop and implement operational plans
- Establish and conduct business relationships
- Follow health, safety and security procedures
- Follow workplace hygiene procedures
- Implement and monitor workplace health, safety and security practices
- Establish and maintain an OHS system

Specialisations are shown below and include an example of the typical units studied:

Restaurant Manager

- Produce simple word processed documents
- Design and produce business documents
- Clean and tidy bar areas
- Operate a bar
- Serve Food and Beverage to customers
- Provide food and beverage service
- Provide table service of alcoholic beverages
- Provide responsible service of alcohol
- Develop and update food and beverage knowledge
- Prepare and serve espresso coffee
- Provide specialist advice on food
- Conduct a product tasting for alcoholic beverages
- Provide specialised advice on Australian wine
- Organise in-house events or functions
- Recruit, select and induct staff
- Monitor staff performance

Kitchen Manager

- Organise and prepare food
- Present food
- Use basic methods of cookery
- Prepare vegetables, fruit, eggs and farinaceous dishes
- Select, prepare and cook meat
- Prepare hot and cold desserts
- Plan and prepare food for buffets
- Develop cost-effective menus
- Prepare pates and terrines
- Prepare cook and serve food for food service
- Prepare foods according to dietary and cultural needs
- Prepare and produce pastries
- Prepare and produce cakes
- Organise in-house events or functions
- Recruit, select and induct staff
- Monitor staff performance

Certificate IV in Hospitality

DURATION	ANNUAL FEE	START DATES
1 year	\$12,160 AUD	February & July
ENTRY REQUIREMENTS:		
<ul style="list-style-type: none"> A minimum overall IELTS score of 5.5 with no band less than 5.0, or equivalent. Successful completion of Australian Year 11 or equivalent. Successful completion of Certificate III in Hospitality will grant up to .5 year of advanced standing. 		
ABOUT THE COURSE:		
This qualification provides the skills and knowledge for an individual to be competent in skilled operations and team leading or supervision.		
CAREER OPPORTUNITIES:		
Graduates from this course may find employment in supervisor roles in restaurants, hotels, motels, catering operations, clubs, pubs, cafes and coffee shops. Graduates will have responsibility for others and provide technical advice and support and lead a small team.		
COURSE STRUCTURE:		
Units include:		
<ul style="list-style-type: none"> Provide and coordinate food and beverage service Provide quality customer service Work with colleagues and customers Work in a socially diverse environment Deal with conflict situations Interpret financial information Coach others in job skills Lead and manage people Receive and store stock Control and order stock Monitor work operations Follow health, safety and security procedures Implement and monitor workplace health, safety and security practices 		

Certificate III in Hospitality

DURATION	TUITION FEE	START DATES
.5 year	\$6160 AUD	February & July
ENTRY REQUIREMENTS:		
<ul style="list-style-type: none"> A minimum overall IELTS score of 5.5 with no band less than 5.0, or equivalent. Successful completion of Australian Year 11 or equivalent. 		
ABOUT THE COURSE:		
This qualification provides the skills and knowledge for an individual to be competent in a range of activities and functions requiring basic operational knowledge and limited practical skills in a defined context. Work would be undertaken in various hospitality settings, such as restaurants, hotels, motels, catering operations, clubs, pubs, cafes and coffee shops. Individuals may have some responsibility for others and provide technical advice and support to a team.		
CAREER OPPORTUNITIES:		
Employment in a restaurant, bar, resort, club as a bar attendant, barista; waiter or wine waiter.		
COURSE STRUCTURE:		
Units include:		
<ul style="list-style-type: none"> Develop and update hospitality industry knowledge Provide quality customer service Work with colleagues and customers Work in a socially diverse environment Coach others in job skills Follow health, safety and security procedures Follow workplace hygiene procedures Provide and coordinate food and beverage service 		

Certificate III in Hospitality

(Commercial Cookery)

DURATION	ANNUAL FEE	START DATES
1 year	\$12,400 AUD + \$600 materials fee	February & July
ENTRY REQUIREMENTS:		
<ul style="list-style-type: none"> A minimum overall IELTS score of 6.0 with no band less than 6.0, or equivalent. Successful completion of Australian Year 11 or equivalent. 		
ABOUT THE COURSE:		
This qualification provides the skills and knowledge for an individual to be competent in a range of activities and functions requiring basic operational knowledge and limited practical skills in a defined context. Work would be undertaken in various hospitality settings, such as restaurants, hotels, motels, catering operations, clubs, pubs, cafes and coffee shops. Individuals may have some responsibility for others and provide technical advice and support to a team.		
All students would be expected to do 240 hours of supervised workplace practice. This can be paid work. Students who are currently working in the industry can count their work time as work placement.		
CAREER OPPORTUNITIES:		
This course reflects the role of a qualified cook and may lead to employment in a commercial kitchen, large or small restaurant, cafe, industrial kitchen or large catering operations.		
COURSE STRUCTURE:		
Units include:		
<ul style="list-style-type: none"> Organise and prepare food Present food Receive and store kitchen supplies Clean and maintain kitchen premises Use basic methods of cookery Prepare appetisers and salads Prepare stocks, sauces and soups Prepare vegetables, fruit, eggs and farinaceous dishes Select, prepare and cook poultry Select, prepare and cook seafood Select, prepare and cook meat Prepare hot and cold desserts Prepare pastries, cakes and yeast goods Develop cost-effective menus Prepare, cook and serve food for food service Prepare, cook and serve food for menus Prepare foods according to dietary and cultural needs Develop and update hospitality industry knowledge Work with colleagues and customers Work in a socially diverse environment Deal with conflict situations Implement food safety procedures Coach others in job skills Follow health, safety and security procedures Follow workplace hygiene procedures Apply first aid 		

Certificate III in Retail Baking

(Combined)

DURATION	ANNUAL FEE	START DATES
1 year	\$12,160 AUD + \$450 materials fee	February
ENTRY REQUIREMENTS:		
<ul style="list-style-type: none"> A minimum overall IELTS score of 6.0 with no band less than 6.0, or equivalent. Successful completion of Australian Year 11 or equivalent. 		
ABOUT THE COURSE:		
This course has been designed to meet the needs of industry and employers by providing the Apprentice/Student with the practical and professional skills that is required to work in the Retail Baking Industry. The course caters for the training requirements of the Retail Baking Occupation as defined in the Nationally approved Training Package. Training and assessment is conducted in specialist training facilities at Charles Darwin University, Palmerston Campus. Training is delivered to provide many benefits to an employer and apprentice including:		
<ul style="list-style-type: none"> new skills that can add value to the business the combination of traditional skills and innovative ideas introduction of new products, trends and services to the students a network for Apprentices and students to communicate and grow that stretches across the Territory an excellent overview of the industry including all aspects of the trade 		
CAREER OPPORTUNITIES:		
Possible jobs relevant to this qualification include pastry cook in specialist cake shops, breadmaker in large manufacturing bread plants. Qualified people with combined breadmaking and pastry cooking skills can gain employment in bakeries, hotels and restaurants.		
COURSE STRUCTURE:		
Units include:		
<ul style="list-style-type: none"> Implement the food safety program and procedures Contribute to OHS processes Use numerical applications in the workplace Provide and apply workplace information Form and fill pastry products Prepare fillings Produce pastry Produce bread dough Produce sponge, cake and cookie batter Decorate cakes and cookies Bake bread Bake sponges, cakes and cookies Bake pastry products Process dough Diagnose and respond to product and process faults (bread) Diagnose and respond to product and process faults (pastry, cake and cookies) Participate in environmentally sustainable work practices 		

Indigenous Studies



Graduate Diploma in Indigenous Knowledges

DURATION	ANNUAL FEE	START DATES
1 year	\$15,680 AUD	February & July
ENTRY REQUIREMENTS:		
<ul style="list-style-type: none"> A minimum overall IELTS score of 6.5 with no band less than 6.0, or equivalent. Successful completion of a recognised bachelors degree or equivalent. Consideration will also be given to non-graduates who have at least five years appropriate professional experience. 		
ABOUT THE COURSE:		
<p>This course provides the opportunity for graduate students to build upon their professional knowledge and experiences and develop a culturally relevant context to their undergraduate or other postgraduate studies. This course provides the opportunity for students to engage with the study of Indigenous knowledges. Themes focus upon: cultural engagement, policy and governance; history and cultural heritage and Yolngu culture and languages. Students examine key issues in relation to Indigenous policy development and implementation, land and sea management, systems of traditional and contemporary governance, intellectual and cultural property rights, Indigenous economies and natural and cultural resource management. These issues are able to be explored in the light of contemporary social and political issues faced by Indigenous people across Australia and internationally.</p>		
CAREER OPPORTUNITIES:		
<p>Career opportunities for graduates of this course exist in areas of community policy development in both government and private sectors.</p>		
COURSE STRUCTURE:		
<p>Students must choose 6 units from the list below:</p>		
<ul style="list-style-type: none"> Indigenous Knowledges and Experience: History and Colonisation Introduction to Yolngu Languages and Culture Yolngu Life and Literature Yolngu Matha Conversations Contested Knowledges Indigenous Knowledges: Representing and Recording Country Arctic to Uluru: Comparative Studies in Indigenous Policy Indigenous Cultures and the Environment Indigenous Independent Study Yolngu Texts and Conversation Cultural Transactions: Communication and Negotiation Global Perspectives on Indigenous Land and Sea Management 		

Graduate Certificate in Yolngu Studies

DURATION	ANNUAL FEE	START DATES
.5 year	\$7840 AUD	February & July
ENTRY REQUIREMENTS:		
<ul style="list-style-type: none"> A minimum overall IELTS score of 6.5 with no band less than 6.0, or equivalent. Successful completion of a recognised bachelors degree or equivalent. 		
ABOUT THE COURSE:		
<p>This course is designed to give an introduction to the life and languages of the Yolngu people in north east Arnhem Land. The course concentrates on Yolngu Matha (Yolngu language) forms of Dhuwala, and focuses on the everyday community version of the language. A basic grounding in the sounds of the languages, grammar and basic vocabulary provides the basis to develop conversation ability and the learning of other Yolngu languages. Moeity systems, various aspects of kinship, Yolngu life, creation stories, songs, art and ceremonies and how these relate are also presented. The independent studies unit allows students an opportunity to focus on topics of personal interest.</p>		
<p>This course is particularly suitable for professionals working in policy development, health and education, including public servants, researchers and other workers not just in Yolngu communities. It also provides an invaluable insight into the complexity of Indigenous societies found elsewhere in Australia.</p>		
CAREER OPPORTUNITIES:		
<p>This course is designed for professionals (particularly in health and education sectors), government workers, researchers and workers on Yolngu communities.</p>		
COURSE STRUCTURE:		
<p>Students must complete the following core unit:</p> <ul style="list-style-type: none"> Introduction to Yolngu Languages and Culture 		
<p>Students must also choose 3 units from the list below:</p>		
<ul style="list-style-type: none"> Yolngu Languages and Culture 2 Yolngu Life and Literature Yolngu Matha Conversion Yolngu Texts and Conversations Indigenous Independent Study 		

Bachelor of Aboriginal and Torres Strait Islander Advocacy

DURATION	ANNUAL FEE	START DATES
3 years	\$15,680 AUD	February & July
ENTRY REQUIREMENTS:		
<ul style="list-style-type: none"> A minimum overall IELTS score of 6.0 with no band less than 6.0, or equivalent. Successful completion of Australian Year 12 or equivalent. 		
ABOUT THE COURSE:		
<p>The Bachelor of Aboriginal and Torres Strait Islander Advocacy degree program provides an opportunity for students to engage intellectually and in hands-on ways with concepts and practices based on Indigenous knowledge systems. The core units and the course specialisations are designed to privilege and advance the exploration and practical application of knowledges from the rich cultural traditions and contemporary social experiences of Indigenous peoples. The course of study promotes the capacity of Aboriginal and Torres Strait Islander people, and those who work with them, to provide accountable leadership, advocate for and empower people and communities in their aspirations for cultural maintenance and reclamation, and for effective participation in contemporary Australian social, cultural and economic life.</p> <p>With a focus upon ensuring graduates demonstrate an ability to apply what they learn in culturally informed and respectful manners, students have the opportunity to acquire and apply knowledge and skills in three core areas of significant importance for Aboriginal and Torres Strait Islander Australians: social policy, land and sea management and/or community advocacy.</p>		
CAREER OPPORTUNITIES:		
<p>These specialised fields of study are tailored to prepare students for professional or/and further study or research that can contribute to, and further develop effective and equitable engagement between Aboriginal and Torres Strait Islander cultures and the broader Australian community.</p>		
COURSE STRUCTURE:		
Core units include:		
<ul style="list-style-type: none"> Language Maintenance and Identity Indigenous Policymaking Understanding Society and Culture Writing Indigenous Ethics and Protocols Indigenous Land and Resources Indigenous Knowledges and Experience: History and Colonisation 		
Social Policy and Practice Specialisation		
Year 2	Year 3	
<ul style="list-style-type: none"> Indigenous Contemporary Perspectives Indigenous Governance and Leadership Indigenous Policy Principles and Practice Arctic to Uluru: Comparative Studies in Indigenous Policy 	<ul style="list-style-type: none"> Work Placement Indigenous People and the Justice System Race and Policy Independent Study 	

Land and Sea Management Practice

Year 2	Year 3
<ul style="list-style-type: none"> Cultural Site Management Indigenous Contemporary Perspectives Archaeology and Cultural Resource Management Representing and Recording Country Indigenous Engagement: Land and Water Indigenous Cultures and the Environment 	<ul style="list-style-type: none"> Work Placement Impact Assessment and Management of Cultural Sites Cultural Transactions: Communication and Negotiation Global Perspectives on Indigenous Land and Sea Management

Community Advocacy and Social Action

Year 2	Year 3
<ul style="list-style-type: none"> Indigenous Contemporary Perspectives Resourcing Community Action Advocacy and Social Action 	<ul style="list-style-type: none"> Work Placement Indigenous Networking and Collaboration Cultural Transactions: Communication and Negotiation Practices and Skills in Indigenous Community Work

Diploma of Aboriginal and Torres Strait Islander Knowledges

DURATION	ANNUAL FEE	START DATES
1 year	\$15,680 AUD	February & July
ENTRY REQUIREMENTS:		
<ul style="list-style-type: none"> A minimum overall IELTS score of 6.0 with no band less than 6.0, or equivalent. Successful completion of Australian Year 12 or equivalent. 		
ABOUT THE COURSE:		
<p>The Diploma of Aboriginal and Torres Strait Islander Knowledges (DATSIK) study program provides an opportunity for students to engage intellectually and in hands-on ways with concepts and practices based on Indigenous knowledge systems. The units are designed to privilege and advance the exploration and practical application of knowledges from the rich cultural traditions and contemporary social experiences of Indigenous peoples. The course of study promotes the capacity of Aboriginal and Torres Strait Islander people, and those who work with them, to provide accountable leadership, advocate for and empower people and communities in their aspirations for cultural maintenance and reclamation, and for effective participation in contemporary Australian social, cultural and economic life.</p> <p>With a focus upon ensuring graduates demonstrate an ability to apply what they learn in culturally informed and respectful manners, students have the opportunity to acquire knowledge and skills that are useful for work in with Aboriginal and Torres Strait Islander people, organisation and communities. or in government departments and agencies, or private enterprises that are involved in Indigenous affairs.</p>		
CAREER OPPORTUNITIES:		
<p>These course program is tailored to prepare students for professional or/and further study or research that can contribute to, and further develop effective and equitable engagement between Aboriginal and Torres Strait Islander cultures and the broader Australian community.</p>		
COURSE STRUCTURE:		
Core units include:		
<ul style="list-style-type: none"> Language Maintenance and Identity Indigenous Policymaking Understanding Society and Culture Writing Indigenous Ethics and Protocol Indigenous Land and Resources Indigenous Knowledges and Experience: History and Colonisation 		

Information Technology



The teaching and continuous support from lecturers and tutors was the best aspect of studying. CDU offered me a practical application to what I learnt and provided career opportunities. I am currently working as a Communications Engineer, looking after the Northern Territory Government Data Network.

Chin Narasimhamurathy -
India



Master of Information Technology (Software Engineering)

DURATION	ANNUAL FEE	START DATES
2 years	\$18,480 AUD	February & July
ENTRY REQUIREMENTS:		
<ul style="list-style-type: none"> A minimum overall IELTS score of 6.5 with no band less than 6.0, or equivalent. Successful completion of a recognised Bachelor of Information Technology, Bachelor of Computer Science or Bachelor of Information Systems or equivalent. 		
ABOUT THE COURSE:		
The Master of Information Technology (Software Engineering) is offered to IT graduates wishing to upgrade their qualifications in the area of software engineering. The course combines course and project work to provide interest and challenge to students. Project work may be based in industry, providing opportunities to engage with potential employers. The course includes a 12-week work experience component, which ensures graduates are job-ready and familiar with local IT employment opportunities.		
CAREER OPPORTUNITIES:		
Career opportunities exist in the areas of information systems and management, web design and development, networking, application development and systems.		
PROFESSIONAL RECOGNITION:		
This program is designed to meet the requirements for accreditation by the Australian Computer Society at the level of Professional and accreditation is currently being sought.		
COURSE STRUCTURE:		
Core units include:		
Year 1	Year 2	
<ul style="list-style-type: none"> Discrete Structures Principles of Software Engineering Software Engineering: Process and Tools Process Development Methodologies Software Engineering in Industry 	<ul style="list-style-type: none"> Professional Practice Project Management Tools and Techniques Entrepreneurship for Professionals Thesis Systems Engineering Software Architectural Design Risk and Reliability Management 	

Bachelor of Information Systems

DURATION	ANNUAL FEE	START DATES
3 years	\$18,480 AUD	February & July
ENTRY REQUIREMENTS:		
<ul style="list-style-type: none"> A minimum overall IELTS score of 6.0 with no band less than 6.0, or equivalent. Successful completion of Australian Year 12 or equivalent. 		
ABOUT THE COURSE:		
This course prepares students for employment in Information Systems or related industries as an information systems professional. Students develop an understanding of the underlying principles and applications and acquire professional knowledge and skills which will enable them to adapt to this interesting and dynamic field.		
CAREER OPPORTUNITIES:		
Career opportunities exist in the areas of systems analyst as well as ICT business analyst. Study opportunities are also provided to assist students to undertake sought-after industry training modules, including Cisco and Microsoft certification.		
PROFESSIONAL RECOGNITION:		
This program is designed to meet the requirements for accreditation by the Australian Computer Society at the level of Professional and accreditation is currently being sought.		
COURSE STRUCTURE:		
Core units include:		
Year 1	Year 2	Year 3
<ul style="list-style-type: none"> eCommerce Software Technologies System Analysis and Design Software Now Computing Fundamentals Operating Systems and Applications Network Engineering Concepts Statistics 	<ul style="list-style-type: none"> Database Concepts Organisational Security Knowledge Management Mobile Web Structures Project Management Networking Infrastructure 	<ul style="list-style-type: none"> Enterprise IT Management Database-Driven Web Applications Human Computer Interaction Design IT Project

Bachelor of Information Technology

DURATION	ANNUAL FEE	START DATES						
3 years	\$18,320 AUD	February & July						
ENTRY REQUIREMENTS:								
<ul style="list-style-type: none"> A minimum overall IELTS score of 6.0 with no band less than 6.0, or equivalent. Successful completion of Australian Year 12 or equivalent. 								
ABOUT THE COURSE:								
<p>Information technology is a challenging and rapidly developing field, with new applications being developed to enhance the environment we live in. Students develop an understanding of the underlying principles and applications of Information Technology in the acquisition of professional knowledge and skills which will enable them to adapt to this interesting and dynamic field as professionals. This course recognises the importance that employers place on people skills and management processes, therefore students will also learn to be problem solvers, decision makers, good communicators and team players.</p>								
CAREER OPPORTUNITIES:								
<p>Career opportunities exist in the areas of web design and development, networking, application development and systems. Study opportunities are also provided to assist students to undertake sought-after industry training modules, including Cisco and Microsoft certification.</p>								
PROFESSIONAL RECOGNITION:								
<p>Graduates are eligible for membership at Professional level of the Australian Computer Society.</p>								
COURSE STRUCTURE:								
Core units include:								
<table border="1"> <thead> <tr> <th>Year 1</th> <th>Year 2</th> <th>Year 3</th> </tr> </thead> <tbody> <tr> <td> <ul style="list-style-type: none"> System Analysis and Design Software Now Computing Fundamentals Operating System and Applications Network Engineering Concepts Statistics </td> <td> <ul style="list-style-type: none"> Database Concepts Organisational Security Mobile Web Structures Building Interactive Software The Mobile Paradigm Project Management </td> <td> <ul style="list-style-type: none"> Database-Driven Web Applications Distributed Development C Programming Human Computer Interaction Design IT Project </td> </tr> </tbody> </table>	Year 1	Year 2	Year 3	<ul style="list-style-type: none"> System Analysis and Design Software Now Computing Fundamentals Operating System and Applications Network Engineering Concepts Statistics 	<ul style="list-style-type: none"> Database Concepts Organisational Security Mobile Web Structures Building Interactive Software The Mobile Paradigm Project Management 	<ul style="list-style-type: none"> Database-Driven Web Applications Distributed Development C Programming Human Computer Interaction Design IT Project 		
Year 1	Year 2	Year 3						
<ul style="list-style-type: none"> System Analysis and Design Software Now Computing Fundamentals Operating System and Applications Network Engineering Concepts Statistics 	<ul style="list-style-type: none"> Database Concepts Organisational Security Mobile Web Structures Building Interactive Software The Mobile Paradigm Project Management 	<ul style="list-style-type: none"> Database-Driven Web Applications Distributed Development C Programming Human Computer Interaction Design IT Project 						
DUAL DEGREE PROGRAM:								
<p>This course is available as part of a dual degree program. See the course list for more information.</p>								

Bachelor of Software Engineering

DURATION	ANNUAL FEE	START DATES				
4 years	\$18,800 AUD	February & July				
ENTRY REQUIREMENTS:						
<ul style="list-style-type: none"> A minimum overall IELTS score of 6.0 with no band less than 6.0, or equivalent. Successful completion of Australian Year 12 or equivalent. 						
ABOUT THE COURSE:						
<p>Software engineering deals with the development of large and complex software applications. The course provides an understanding of the underlying principles and applications. It equips graduates with professional knowledge and skills required to adapt this rapidly developing field.</p>						
CAREER OPPORTUNITIES:						
<p>Career opportunities exist in the areas of software engineer and software developer. Study opportunities are also provided to assist students to undertake sought-after industry training modules, including Cisco and Microsoft certification.</p>						
PROFESSIONAL RECOGNITION:						
<p>This program is designed to meet the requirements for accreditation by the Australian Computer Society at the level of Professional and accreditation is currently being sought.</p>						
COURSE STRUCTURE:						
Core units include:						
<table border="1"> <thead> <tr> <th>Year 1</th> <th>Year 2</th> </tr> </thead> <tbody> <tr> <td> <ul style="list-style-type: none"> System Analysis and Design Software Now Computing Fundamentals Operating System and Applications Network Engineering Concepts Statistics </td> <td> <ul style="list-style-type: none"> Database Concepts Organisational Security Algorithm and Complexity Mobile Web Structures Digital Systems and Computer Architecture Building Interactive Software The Mobile Paradigm Project Management </td> </tr> </tbody> </table>	Year 1	Year 2	<ul style="list-style-type: none"> System Analysis and Design Software Now Computing Fundamentals Operating System and Applications Network Engineering Concepts Statistics 	<ul style="list-style-type: none"> Database Concepts Organisational Security Algorithm and Complexity Mobile Web Structures Digital Systems and Computer Architecture Building Interactive Software The Mobile Paradigm Project Management 		
Year 1	Year 2					
<ul style="list-style-type: none"> System Analysis and Design Software Now Computing Fundamentals Operating System and Applications Network Engineering Concepts Statistics 	<ul style="list-style-type: none"> Database Concepts Organisational Security Algorithm and Complexity Mobile Web Structures Digital Systems and Computer Architecture Building Interactive Software The Mobile Paradigm Project Management 					
<table border="1"> <thead> <tr> <th>Year 3</th> <th>Year 4</th> </tr> </thead> <tbody> <tr> <td> <ul style="list-style-type: none"> Database-Driven Web Applications Distributed Development C Programming Human Computer Interaction Design Industrial Experience </td> <td> <ul style="list-style-type: none"> Thesis Software Design Discrete Structures Principles of Software Engineering Software Engineering: Process and Tools Process Development Methodologies Software Engineering in Industry Network Engineering Applications </td> </tr> </tbody> </table>	Year 3	Year 4	<ul style="list-style-type: none"> Database-Driven Web Applications Distributed Development C Programming Human Computer Interaction Design Industrial Experience 	<ul style="list-style-type: none"> Thesis Software Design Discrete Structures Principles of Software Engineering Software Engineering: Process and Tools Process Development Methodologies Software Engineering in Industry Network Engineering Applications 		
Year 3	Year 4					
<ul style="list-style-type: none"> Database-Driven Web Applications Distributed Development C Programming Human Computer Interaction Design Industrial Experience 	<ul style="list-style-type: none"> Thesis Software Design Discrete Structures Principles of Software Engineering Software Engineering: Process and Tools Process Development Methodologies Software Engineering in Industry Network Engineering Applications 					

Diploma of Network Engineering (Higher Education Program)

DURATION	ANNUAL FEE	START DATES	
1 year	\$18,320 AUD	February & July	
ENTRY REQUIREMENTS:			
<ul style="list-style-type: none"> A minimum overall IELTS score of 6.0 with no band less than 6.0, or equivalent. Successful completion of Australian Year 12 or equivalent. 			
ABOUT THE COURSE:			
<p>The Diploma of Network Engineering prepares students to become job-ready IT professionals. Graduates of this award will have the skills and knowledge to design, commission and maintain data networks that play a crucial role in the infrastructure of industry and government organisations.</p>			
<p>To help increase the benefit to students and the attractiveness to employers, Charles Darwin University also offers the chance for students to acquire highly attractive industry qualifications including Cisco and Microsoft certifications. As some of these industry qualifications dictate compulsory in-house hands-on components Charles Darwin University will provide students with residential workshops where required free of charge (transport and accommodation is the onus of the student). Since the completion of these industry qualifications is optional, non achievement of these qualifications will not affect the student's ability to successfully complete the course. As the industry qualifications are extra to and outside of this course the nominal cost of sitting the exam must be covered by the student.</p>			
<p>Note: It is required that students intending to complete the Cisco certification (CCNA1) must be able to attend weekly residential workshops over 12 weeks.</p>			
CAREER OPPORTUNITIES:			
<p>Career opportunities exist in the areas of information systems and maangement, web design and development, networking, application development and systems.</p>			
PROFESSIONAL RECOGNITION:			
<p>Graduates are eligible for membership at Associate level of the Australian Computer Society.</p>			
COURSE STRUCTURE:			
Core units include:			
<table border="1"> <tbody> <tr> <td> <ul style="list-style-type: none"> Software Now Computing Fundamentals Operating System and Applications Network Engineering Concepts Network Infrastructure </td> </tr> </tbody> </table>			<ul style="list-style-type: none"> Software Now Computing Fundamentals Operating System and Applications Network Engineering Concepts Network Infrastructure
<ul style="list-style-type: none"> Software Now Computing Fundamentals Operating System and Applications Network Engineering Concepts Network Infrastructure 			

Law & Legal Studies



Bachelor of Laws

DURATION	ANNUAL FEE	START DATES
4 years	\$16,480 AUD	February & July

ENTRY REQUIREMENTS:

- A minimum overall IELTS score of 6.0 with no band less than 6.0, or equivalent.
- Successful completion of Australian Year 12 or equivalent.

ABOUT THE COURSE:

The primary aim of this course is to provide legal education for the practice of law. In that context, the course aims to provide knowledge of the legal system and legal principles, and to cultivate a capacity for legal research, analysis and communication. The course also deals with theoretical perspectives on the law and encourages an appreciation of legal issues of special significance to the Northern Territory, including Aboriginal legal issues. This course offers a graduate entry pathway to enable those who hold a degree level qualification to complete an Australian law degree in three years instead of four years.

CAREER OPPORTUNITIES:

Graduates of law are not restricted to a career as a solicitor, barrister, prosecutor or judge, if that is not their ambition. A law degree opens up career options in in-house counsel of private and public institutions, teaching, industrial relations, military, police services, politics, human rights, customs, immigration or any public or private sector employment where an in-depth understanding of the law would be an advantage.

PROFESSIONAL RECOGNITION:

The Bachelor of Laws is accredited by the Legal Practitioners Admission Board of the Northern Territory and provides the academic foundation for admission to legal practice in the Northern Territory and elsewhere in Australia. To be admitted to legal practice anywhere in Australia, law graduates must complete further practical legal training. Students intending to seek admission to practice are strongly advised to seek advice from the admitting authority in the relevant jurisdiction.

COURSE STRUCTURE:

Core units include:

Year 1	Year 2	Year 3
<ul style="list-style-type: none"> ▪ Introduction to Legal Studies ▪ Legal Interpretation ▪ Criminal Law ▪ Torts ▪ Contracts 	<ul style="list-style-type: none"> ▪ Introduction to Public Law ▪ Constitutional Law ▪ Equity ▪ Trusts ▪ Property Law 	<ul style="list-style-type: none"> ▪ Administrative Law ▪ Corporations Law ▪ Evidence ▪ Civil Procedure ▪ Professional Responsibility

Specialist law electives offered annually include:

- Environmental and Planning Law
- Contemporary Issues
- Family Law
- Advanced Criminal Law
- Advanced Torts
- Advanced Contracts and Advanced Property Law
- Indigenous Peoples and the Legal System
- Human Rights Law
- Intellectual Property Law
- International Law

Other specialist electives are offered in alternate years.

DUAL DEGREE PROGRAM:

This course is available as part of a dual degree program. See the course list for more information.

Associate Degree in Legal Studies

DURATION	ANNUAL FEE	START DATES
2 years	\$16,320 AUD	February & July

ENTRY REQUIREMENTS:

- A minimum overall IELTS score of 6.0 with no band less than 6.0, or equivalent.
- Successful completion of Australian Year 12.

ABOUT THE COURSE:

This course is designed to enable students to acquire a broad understanding of the process of law in our society as well as gaining a range of legal and practical skills. It caters for two groups of students, those who have a general interest in legal issues without wishing to complete a full law degree and those who wish to gauge their interest in legal studies and later seek to undertake a full law degree program. Students successfully completing this program are eligible for entry into the Bachelor of Laws program with significant advanced standing.

CAREER OPPORTUNITIES:

Graduates of this course may seek career opportunities in a range of administrative, secretarial or paralegal employments in government, corporate and private legal environments. Further training and/or work experience is likely to be required for particular occupations.

COURSE STRUCTURE:

Core units include:

Year 1	Year 2
<ul style="list-style-type: none"> ▪ Introduction to Legal Studies ▪ Legal Interpretation ▪ Criminal Law ▪ Torts ▪ Contracts 	<ul style="list-style-type: none"> ▪ Introduction to Public Law ▪ Constitutional Law ▪ Property Law

Specialist law electives offered annually include:

- Environmental and Planning Law
- Contemporary Issues
- Family Law
- Advanced Criminal Law
- Advanced Torts
- Advanced Contracts
- Advanced Property Law
- Indigenous Peoples and the Legal System
- Human Rights Law
- Dispute Resolution
- Equity
- Trusts
- Practical Advocacy
- Evidence

Science



CDU's size is just right for me - not too big and not too small. In larger universities is quite difficult to get enough time and attention with colleagues and supervisors. At CDU most amenities and related environmental agencies are close by and this saved me lots of time.

Modh Azlan Abdul Gulan
Azad - Malaysia



Bachelor of Exercise and Sport Science

DURATION	ANNUAL FEE	START DATES
3 years	\$19,840 AUD	February & July
ENTRY REQUIREMENTS:		
<ul style="list-style-type: none"> A minimum overall IELTS score of 6.0 with no band less than 6.0, or equivalent. Successful completion of Australian Year 12 or equivalent. 		
ABOUT THE COURSE:		
The Exercise and Sport Science course is designed to equip graduates as allied health professionals who use exercise as an intervention to improve health and fitness, enhance physical performance and prevent and rehabilitate injury in both healthy (including athletes) and physically challenged (such as aged and injured) populations.		
CAREER OPPORTUNITIES:		
Exercise and Sport Science graduates have diverse employment opportunities in fitness, sport and health industries. In the fitness industry they consult, test, prescribe and administer programs in commercial, corporate or government settings. In the sports industry they coach, train and apply physiology, psychology and biomechanics to human physical performance. In the health industry they are involved in education and promotion or in clinical settings for cardiac, pulmonary and musculo-skeletal testing and rehabilitation.		
PROFESSIONAL RECOGNITION:		
Graduates who fulfil the degree requirements can submit individual applications for registration as a full member of Exercise and Sports Science Australia (ESSA).		
COURSE STRUCTURE:		
Core units include:		
Year 1	Year 2	Year 3
<ul style="list-style-type: none"> Introduction to Psychology A Anatomy & Physiology 	<ul style="list-style-type: none"> Design & Analysis of Biological Studies Functional Anatomy Biomechanics Exercise and Sport Psychology Exercise Physiology Motor Control & Development 	<ul style="list-style-type: none"> Exercise & Sport Science Practicum Advanced Study in Exercise and Sport Science Nutrition and Health Exercise and Health

Bachelor of Science

DURATION	ANNUAL FEE	START DATES
3 years	\$19,840 AUD	February & July
ENTRY REQUIREMENTS:		
<ul style="list-style-type: none"> A minimum overall IELTS score of 6.0 with no band less than 6.0, or equivalent. Successful completion of Australian Year 12 or equivalent. 		
ABOUT THE COURSE:		
This course offers flexibility and diversity with a focus on gaining professional experience, whether as a biologist, spatial scientist, science educator, chemist or in other science fields. Students may choose to integrate studies from a variety of areas outside of traditional science disciplines into their science degree.		
Graduates are equipped to demonstrate and apply an understanding of their chosen areas of science, including concepts, theories and principles to practise in real situations. Students also become effective problem solvers able to think globally, apply logical and critical thinking, and to apply an understanding of scientific and technological factors and to consider issues from various cultural, economic and other societal perspectives.		
CAREER OPPORTUNITIES:		
Science graduates are employed by government, private companies and research organisations.		
COURSE STRUCTURE:		
Specialisations and shown below and include an example of the typical units studied:		
Science Education		
Year 1	Year 2	Year 3
<ul style="list-style-type: none"> The Diversity of Life Introduction to Psychology Chemical Concepts Concepts of Physics 	<ul style="list-style-type: none"> Environmental Issues Science Education Design and Analysis of Biological Studies 	<ul style="list-style-type: none"> Science Literacy Professional Practice in Science
Geographic Information Science		
Year 1	Year 2	Year 3
<ul style="list-style-type: none"> Chemical Concepts Concepts of Physics Earth Systems Software Now Introduction to Remote Sensing 	<ul style="list-style-type: none"> Design and Analysis of Biological Studies Database Concepts Applied Geographic Information Systems 	<ul style="list-style-type: none"> Catchments to Coasts Environmental Monitoring and Modelling
General Science		
Year 1	Year 2	Year 3
<ul style="list-style-type: none"> Chemical Concepts Concepts of Physics 	<ul style="list-style-type: none"> Design and Analysis of Biological Studies 	<ul style="list-style-type: none"> Professional Practice in Science
Medical Science		
Year 1	Year 2	
<ul style="list-style-type: none"> Chemical Concepts Concepts of Physics Anatomy and Physiology Microbiology 	<ul style="list-style-type: none"> Design and Analysis of Biological Studies 	

Social Work & Community Studies



International support have helped me a lot in my studies in Charles Darwin University.

The international support staff really helped me get settled in Darwin and made me feel like I was not alone, especially in the first year when I was still learning about how things work in an Australian university.

Achmad Miraz - Indonesia



Bachelor of Humanitarian and Community Studies

DURATION	ANNUAL FEE	START DATES
3 years	\$16,320 AUD	February & July
ENTRY REQUIREMENTS:		
<ul style="list-style-type: none"> A minimum overall IELTS score of 6.0 with no band less than 6.0, or equivalent. Successful completion of Australian Year 12 or equivalent. 		
ABOUT THE COURSE:		
<p>The Bachelor of Humanitarian and Community Studies provides students with the knowledge and skills required to work with individuals, groups and communities in areas of reduced or limited infrastructure. In particular, students will gain practical skills to work effectively and safely with communities in situations where resources are limited due to geographic location (remoteness), social circumstances, emergency situations or regional disaster.</p> <p>Themes running through the course include multi-disciplinary practice, challenging cross-cultural constructs and working in remote locations. Students will exit the three year program with both a foundation in human services work providing eligibility to join the Australian Community Workers Association and practical skills based on the entry/application requirements of Humanitarian Aid agencies for work as a generic humanitarian logistician.</p> <p>This course will provide students with the necessary skills to prepare them to work effectively in remote communities in Australia, disaster affected areas nationally and internationally and in logistically supporting Humanitarian Aid agencies.</p> <p>Note: Students must obtain a working with children clearance notice (Ochre Card) and have cleared a Police Check before they can undertake field placements. Students whose Police Checks are not cleared will not be able to undertake field placements and will not therefore be able to complete the requirements of the course. Students are also required to have a valid driver's licence due to four wheel drive training requirements.</p>		
CAREER OPPORTUNITIES:		
<p>Graduates will have the skills to work as Community and Welfare Workers in a variety of environments either with government or private agencies, with Humanitarian AID agencies nationally and internationally, as a humanitarian logistician.</p>		
PROFESSIONAL RECOGNITION:		
<p>Graduates are eligible to join the Australian Community Workers Association (ACWA).</p>		
COURSE STRUCTURE:		
Core units include:		
Year 1	Year 2	Year 3
<ul style="list-style-type: none"> Introduction to Psychology A Global Sociology Introduction to Human Services Communication Skills 	<ul style="list-style-type: none"> Human Service Organisations Social Work Research Methods Working with and Developing Communities Dynamics of Groupwork Project Management Remote Project Experience 	<ul style="list-style-type: none"> Engaging with Individuals/Families in Partnership Social Policy Legal Issues in Social Work Integrated Methods of Humanitarian and Community Studies Field Placement Skills for Regional and Remote Practice

Bachelor of Social Work

DURATION	ANNUAL FEE	START DATES
4 years	\$16,320 AUD	February & July
ENTRY REQUIREMENTS:		
<ul style="list-style-type: none"> A minimum overall IELTS score of 6.0 with no band less than 6.0, or equivalent. Successful completion of Australian Year 12 or equivalent. 		
ABOUT THE COURSE:		
<p>The Bachelor of Social Work is a professionally accredited degree that allows students to meet the requirements for eligibility for membership with the Australian Association of Social Workers. The degree offers students the opportunity to study the core elements of social work with a focus on issues relevant to the Northern Territory. A key element of student's learning is the requirement to undertake two, 70-day placements in the third and fourth years of study.</p> <p>Note: Students must obtain a working with children clearance notice (Ochre Card) and have cleared a Police Check before they can undertake field placements. Students whose Police Checks are not cleared will not be able to undertake field placements and will not therefore be able to complete the requirements of the course. Students are also required to have a valid driver's licence due to four wheel drive training requirements.</p>		
CAREER OPPORTUNITIES:		
<p>As an accredited social worker graduates are able to take up a range of career options in both the government and non government sectors. Fields of practice include: child protection, health, mental health, justice, alcohol and other drug services, family support, aged care, employment services etc.</p>		
PROFESSIONAL RECOGNITION:		
<p>Eligibility for membership for the Australian Association of Social Workers.</p>		
COURSE STRUCTURE:		
Core units include:		
Year 1	Year 2	Year 3
<ul style="list-style-type: none"> Introduction of Psychology Sociological Perspectives Global Sociology Introduction to Human Services Communication Skills 	<ul style="list-style-type: none"> Lifespan Development Dynamics of Group Work Human Service Organisations 	<ul style="list-style-type: none"> Social Work Theory and Practice Social Policy Working with and Developing Communities Social Work Research Methods Ethical Dilemmas and Social Justice Engaging with Individuals/Families in Partnership Field Education A
Year 3	Year 4	
<ul style="list-style-type: none"> Social Work Theory and Practice Social Policy Working with and Developing Communities Social Work Research Methods Ethical Dilemmas and Social Justice Engaging with Individuals/Families in Partnership Field Education A 	<ul style="list-style-type: none"> Culture in Practice Informing Practice with Evidence Skills for Regional and Remote Practice Integrated Methods of Social Work Legal Issues in Social Work Field Education B 	

Postgraduate Research



Master by Research

DURATION	ANNUAL FEE	START DATES
2 years	Non Lab Based \$18,480 AUD Lab Based \$21,840 AUD	February & July

ENTRY REQUIREMENTS:

- A minimum overall IELTS score of 6.5 with no band less than 6.0, or equivalent.
- Successful completion of an Australian Bachelor degree with second class Honours division A, or an Australian Masters degree with a substantial research component. Alternatively, you may have other qualifications and/or experience equivalent to these degrees.

ABOUT THE COURSE:

A Master by Research is an internationally recognised postgraduate research degree that involves undertaking a significant research project. The program provides students with an opportunity to develop and enhance analytical and research skills through independent investigation in a specific field. The Master by Research is a two year full-time degree in which candidates complete supervised research and usually a 30,000-35,000 word thesis. Research can be undertaken in any one of the University's schools or research institutes and centres. Gaining a research degree indicates to a prospective employer that you have excellent project and personal management skills, that you can think independently and critically, solve problems and communicate effectively. Transferable skills developed through a research degree are usually more durable, and therefore more valuable, than the content knowledge gained. Many Master by Research students choose to continue with their research in order to obtain a PhD.

A panel of supervisors is appointed and approved by the University to provide direction and advice to the candidate. Potential research candidates should consult the University's Common Course Rules - Master by Research, which are available at: www.cdu.edu.au/governance/rules/rul-008.pdf

Applicants for this course are required to provide: referee reports, research proposal outline (400 - 600 words), certified academic transcripts and other supporting documentation in their application.

Doctor of Philosophy

DURATION	ANNUAL FEE	START DATES
4 years	Non Lab Based \$18,480 AUD Lab Based \$21,840 AUD	February & July

ENTRY REQUIREMENTS:

- A minimum overall IELTS score of 6.5 with no band less than 6.0, or equivalent.
- Successful completion of an Australian Bachelor degree with second class Honours division A, or an Australian Masters degree with a substantial research component. Alternatively, you may have other qualifications and/or experience equivalent to these degrees.

ABOUT THE COURSE:

The Doctor of Philosophy (PhD) degree provides training and education with the objective of producing graduates with the capacity to conduct research independently at a high level of originality and quality. A PhD candidate should uncover new knowledge either by the discovery of new facts, the formulation of theories or the innovative re-interpretation of known data and established ideas. Doctorates are completed within 3 years full-time candidature, with a maximum enrolment of four years full time. The PhD is a recognition of successful research experience of international standard in the discipline.

Whether you choose to undertake a PhD straight after your undergraduate studies or a few years into your career, it will give you the opportunity to create new knowledge and provide solutions to tomorrow's challenges. As an innovator, your work will benefit the community, governments and industry, both locally and internationally.

A panel of supervisors is appointed and approved by the University to provide direction and advice to the candidate. Potential candidates should consult the University's Common Course Rules - Doctor of Philosophy, which are available at: www.cdu.edu.au/governance/rules/rul-010.pdf

Applicants for this course are required to provide: referee reports, research proposal outline (400 - 600 words), certified academic transcripts and other supporting documentation in their application.

2014 International Course List

Course	Fees per year	Duration	Semester Intake	Page Number
Arts & Creative Arts				
Bachelor of Arts	\$ 16,320	3 years	February / July	29
Bachelor of Creative Arts and Industries (Communication)	\$ 16,640	3 years	February / July	30
Bachelor of Creative Arts and Industries (Music)	\$ 16,640	3 years	February / July	30
Bachelor of Creative Arts and Industries (New Media Design)	\$ 16,640	3 years	February / July	31
Bachelor of Creative Arts and Industries (Visual Arts)	\$ 16,640	3 years	February / July	31
Building Design & Architecture				
Bachelor of Design	\$ 17,600	3 years	February / July	33
Business & Commerce				
Master of Accounting (Professional Practice)	\$ 20,560	2 years	February / July	35
Master of Business Administration (Professional Practice)	\$ 20,560	2 years	February / July	36
Bachelor of Commerce	\$ 16,880	3 years	February / July	37
Bachelor of Accounting	\$ 16,880	3 years	February / July	38
Diploma of Business	\$ 6,160*	0.5 years	February / July	38
Certificate IV in Accounting	\$ 6,160*	0.5 years	February / July	39
Certificate IV in Business	\$ 6,160*	0.5 years	February / July	39
Certificate III in Accounts Administration	\$ 6,160*	0.5 years	February	40
Certificate III in Business	\$ 6,160*	0.5 years	February & July	40
Education				
Master of Education	\$ 18,240	1 year	February / July	43
Graduate Diploma of Teaching and Learning	\$ 18,560	1 year	February	44
Bachelor of Education (Primary Teaching)	\$ 16,480	4 years	February / July	44
Bachelor of Education Secondary Teaching (Visual Arts)	\$ 16,480	4 years	February / July	45
Bachelor of Education Secondary Teaching (Health & Physical Education)	\$ 16,480	4 years	February / July	45
Bachelor of Education Secondary Teaching (Science)	\$ 16,480	4 years	February / July	46
Bachelor of Education Secondary Teaching (Music)	\$ 16,480	4 years	February / July	46
Bachelor of Education Secondary Teaching (Information Technology)	\$ 16,480	4 years	February / July	47
Bachelor of Education Secondary Teaching (Humanities & Social Sciences)	\$ 16,480	4 years	February / July	47
Engineering				
Master of Engineering	\$ 21,440	2 years	February / July	49
Bachelor of Engineering	\$ 21,360	4 years	February / July	50
Bachelor of Engineering Science	\$ 21,360	2 years	February / July	51
Associate Degree in Process Engineering	\$ 21,360	2 years	February / July	52
Diploma of Engineering	\$ 21,360	1 year	February / July	52
Environmental Science				
Master of Environmental Management	\$ 20,320	2 years	February / July	55
Bachelor of Environmental Science	\$ 20,160	3 years	February / July	56
Diploma in Conservation and Land Management	\$ 6,320*	0.5 years	July	57

The tuition fees quoted above are in \$AUD and are correct at the time of publication. Tuition fees are paid each semester in advance. International students enrolled in a Higher Education course (undergraduate or postgraduate) will need to pay an annual Student Services and Amenities fee. In 2013 the Student Services and Amenities fee is \$220 AUD. The University reviews tuition fees and the Student Services and Amenities fee annually and any changes to fees will apply to all commencing and continuing international students.

Course	Fees per year	Duration	Semester Intake	Page Number
Health Sciences				
Graduate Diploma in Psychology	\$ 16,320	1 year	February / July	59
Bachelor of Health Sciences	\$ 19,840	3 years	February / July	59
Bachelor of Medical Laboratory Science	\$ 21,120	4 years	February	60
Bachelor of Midwifery	\$ 20,480	3 years	February	60
Bachelor of Nursing (Pre-Registration)	\$ 20,800	3 years	February & July	61
Bachelor of Pharmacy	\$ 22,480	4 years	February & July	61
Bachelor of Psychological Science	\$ 16,960	3 years	February / July	62
Hospitality				
Diploma of Hospitality	\$ 12,160	2 years	February / July	65
Certificate IV in Hospitality	\$ 12,160	1 year	February / July	66
Certificate III in Hospitality	\$ 6,160*	0.5 years	February / July	66
Certificate III in Hospitality (Commercial Cookery)	\$ 12,400	1 year	February / July	67
Certificate III in Retail Baking (Combined)	\$ 12,160	1 year	February	67
Indigenous Studies				
Graduate Diploma in Indigenous Knowledges	\$ 15,680	1 year	February / July	69
Graduate Certificate in Yolngu Studies	\$ 7,840*	0.5 years	February / July	69
Bachelor of Aboriginal and Torres Strait Islander Advocacy	\$ 15,680	3 years	February / July	70
Diploma of Aboriginal and Torres Strait Islander Knowledges	\$ 15,680	1 year	February / July	71
Information Technology				
Master of Information Technology (Software Engineering)	\$ 18,480	2 years	February / July	73
Bachelor of Information Systems	\$ 18,480	3 years	February / July	73
Bachelor of Information Technology	\$ 18,320	3 years	February / July	74
Bachelor of Software Engineering	\$ 18,800	4 years	February / July	74
Diploma of Network Engineering	\$ 18,320	1 year	February / July	75
Law & Legal Studies				
Bachelor of Laws	\$ 16,480	4 years	February / July	77
Associate Degree in Legal Studies	\$ 16,320	2 years	February / July	77
Science				
Bachelor of Exercise and Sport Science	\$ 19,840	3 years	February / July	79
Bachelor of Science	\$ 19,840	3 years	February / July	79
Social Work & Community Studies				
Bachelor of Humanitarian and Community Studies	\$ 16,320	3 years	February / July	81
Bachelor of Social work	\$ 15,680	4 years	February / July	81
Dual Degrees				
Bachelor of Arts / Bachelor of Creative Arts and Industries	\$ 15,840	4 years	February / July	50
Bachelor of Arts / Bachelor of Laws	\$ 15,680	5 years	February / July	50, 82
Bachelor of Creative Arts and Industries (New Media) / Bachelor of Information Technology	\$ 16,800	4 years	February / July	52, 81
Bachelor of Arts / Bachelor of Teaching and Learning	\$ 15,680	4 years	February	50, 65
Bachelor of Creative Arts and Industries / Bachelor of Teaching and Learning	\$ 15,840	4 years	February / July	50, 65
Bachelor of Commerce / Bachelor of Laws	\$ 15,760	5 years	February / July	59, 82
Bachelor of Commerce / Bachelor of Engineering	\$ 19,520	5 years	February / July	59, 67
Bachelor of Commerce / Bachelor of Information Technology	\$ 17,360	4 years	February / July	59, 81
Bachelor of Engineering / Bachelor of Information Technology	\$ 19,040	5 years	February / July	67, 81
Bachelor of Engineering / Bachelor of Science	\$ 19,600	5 years	February / July	67, 83
Postgraduate Research				
Doctor of Philosophy and Master by Research				
- Lab-based research	\$ 21,840	4 years	February / July	83
- Non lab-based research	\$ 18,480	4 years	February / July	83

* Total course fee

Important Dates

	SEMESTER ONE		SEMESTER TWO	
	VET*	Higher Education	VET*	Higher Education
Applications close	31 January	31 January	23 June	23 June
Orientation	27 January	26 & 27 February	16 & 17 July	16 & 17 July
Semester commences	3 February	3 March	21 July	21 July
Semester break	21 - 25 April	21 - 25 April	8 - 12 September	8 - 12 September
Semester end	20 June	20 June	7 November	7 November



*VET dates vary. The start date for your course will be stated on your Letter of Offer.



Office of International Services
Charles Darwin University
Darwin NT 0909 Australia

Telephone: +61 8 8946 7215
Email: international@cdu.edu.au
Website: www.cdu.edu.au/international

CRICOS Provider No. 00300K (NT) | 03286A (NSW)



Australia

> FutureUnlimited